



Opto Edu A41.1952 Operating Microscope Neurosurgery Brain Surgery Ent Dual Head

Our Product Introduction

Basic Information

- Place of Origin: China
- Brand Name: OPTO-EDU
- Certification: CE, Rohs
- Model Number: A41.1952
- Minimum Order Quantity: 1 pc
- Price: FOB \$1~1000, Depend on Order Quantity
- Packaging Details: Carton Packing, For Export Transportation
- Delivery Time: 5~20 Days
- Payment Terms: T/T, West Union, Paypal
- Supply Ability: 5000 pcs/ Month



Product Specification

- Main Usage: Neurosurgery, Brain Surgery, ENT
- Diopter: Both Left & Right Eyetube Diopter Adjustable $\pm 6D$
- Eyepiece: WF12.5x
- Zoom Body: Manual Continues Zoom 1:6, Parallel Light System
- Objective: F=300mm
- Total Magnification: 2x~12.5x
- Highlight: **dual head operating microscope neurosurgery ,
operating microscope neurosurgery ,
neurosurgery brain surgery microscope**

for more products please visit us on cnoec.com

Product Description

A41.1951, A41.1952 Surgical Operation Microscope Features

A41.1951, A41.1952 Series Operating Microscopes, is advanced high quality series. It use fibre-optic cable for coaxial illumination, with 3 steps zoom body, has total magnification 2x~30x, featured with Motorized Focusing, it is widely used in hospital for Orthopedics, Hand, Chest, Burn And Plastic Surgery, Andrology, Genitourinary, Animal Anatomy and etc.

- 2 People 2 Binocular Manual Swing Head In X Direction +/-45°, In Y Direction +/-90°
- Manual Continuous Zoom 2x~12.5x Objective Parallel Light System
- 2 Directions Motorized Foot Switch Control Focusing Up/Down
- Four Feet With Locking Wheels, Max Extended Length 1100mm
- Coaxial Halogen Illumination, Light Spot Dia.70mm, Max Brightness 60000 Lux



OPTO-EDU (BEIJING) CO., LTD.

OPTO-EDU

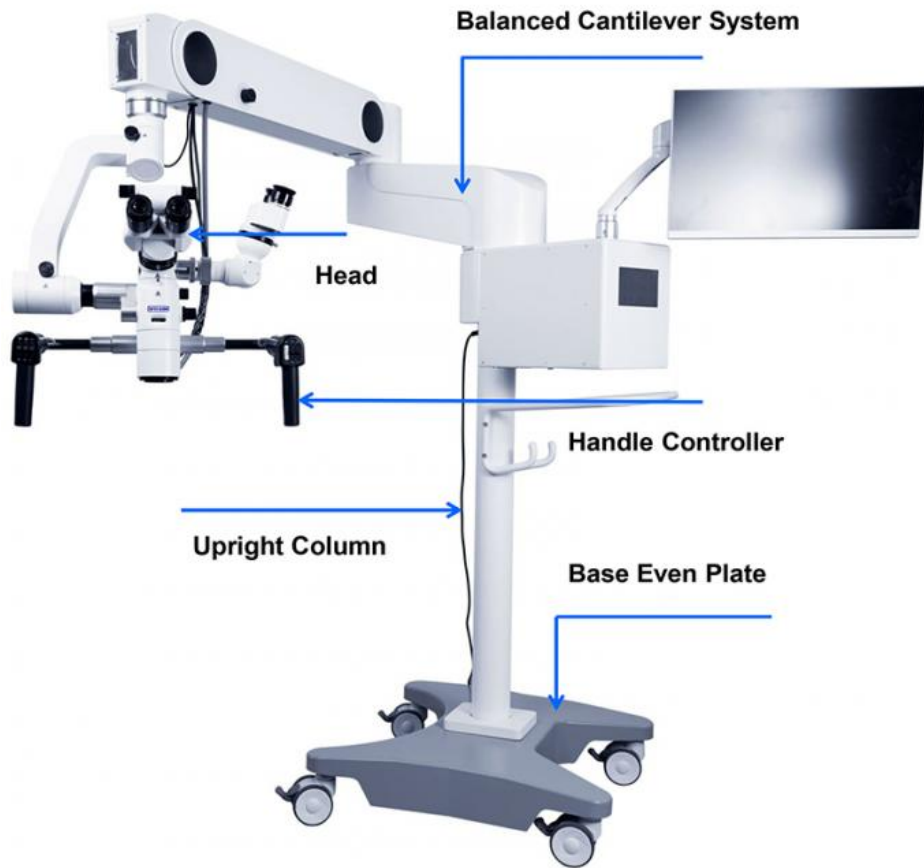
F-1501 Wanda Plaza, No.18 Shijingshan Road, Beijing 100043, China
Tel:+8610 88696020 E-mail:sale@cnoec.com

A41.1952 Operating Microscope

Operating Microscope, Dual Head, Motor Zoom, 1.8x~19x,
10 Function Handle, For Neurosurgery, Brain Surgery, ENT

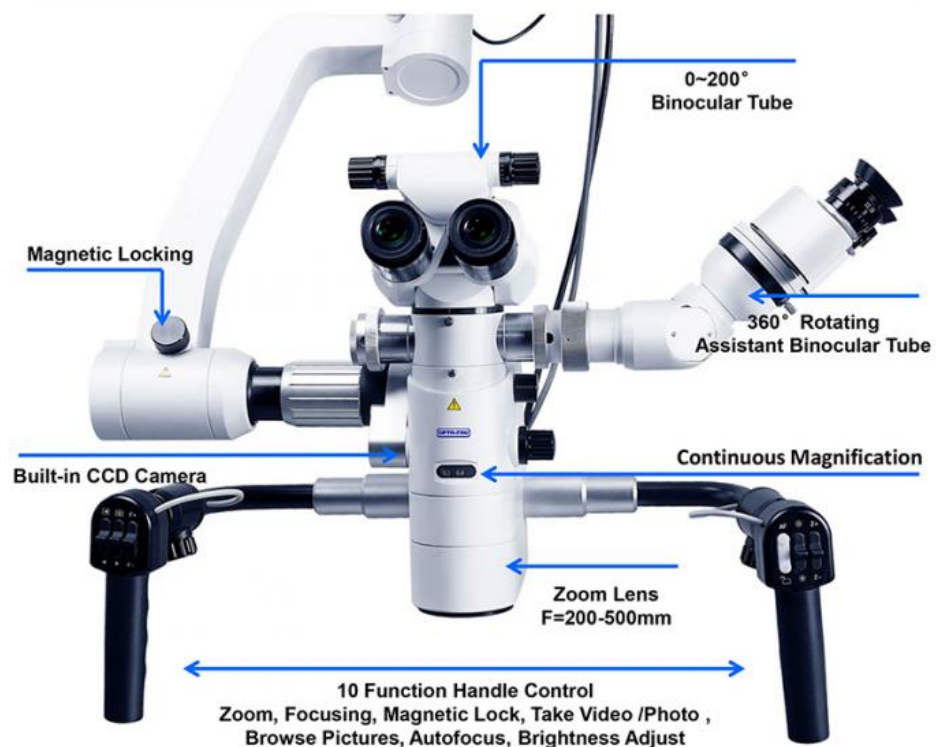


A41.1952 Details



A41.1952 Operating Microscope, is Best Choice for Neurosurgery, Brain Surgery Operation. It has one main head and one assistant head which can rotate 360° freely, using 2 set Xenon 300W Light for coaxial illumination up to 100000 lux, 1:6 Zoom Body, has total magnification 1.8x~19x, featured with Motorized Focusing, and 10 Functions control handle, it is widely used in hospital for Neurosurgery, Spinal, Vascular, ENT, Plastic, Reconstructive Surgery, Brain Surgery, Dental, and etc

A41.1952 Details



A41.1952 Features

- 2021 New Best Choice For Neurosurgery, Brain Surgery, Dental, ENT Operation Microscope
- Dual Head Binocular, Eyepiece 12.5x, Motorized Zoom 1.8x~19x, Objective F=200~500mm
- Main Binocular Variable Angle 0-200°, With Built-in CCD Camera & Software, Assistant Head 3x-16x
- 10 Function Handle, Zoom, Focusing, Magnetic Lock, Photo/Video, Review, Auto Focus, Brightness Adjust
- Built-in Dual Xenon 300W Light, 100000 Lux, Stand Max Extend Range 1250mm, With Magnetic Lock



Multilayer Coating Technology, The Light Transmittance Is Up To 98%

Through multilayer coating technology, we can reduce light reflection attenuation, increase light transmission and improve brightness. The multilayer coating technology we use can achieve optical energy passing rate of 98%.

A41.1952 Details



6 Sets Magnetic Locking System For Arm And Head , Controlled By Handle



A41.1952 Details

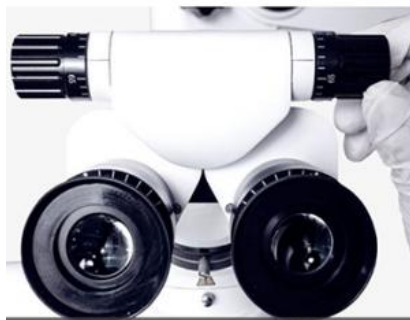
200-500mm Zoom Objective Lens



One Button Autofocus



A41.1952 Details



Pupil Distance Adjustable 55mm~75mm



Small Light Spot, Blue Filter And Yellow Filter



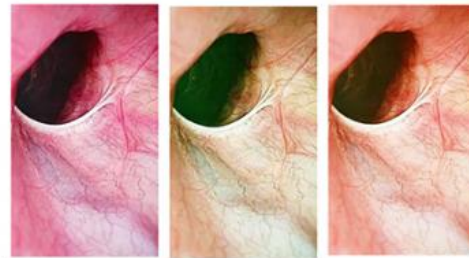
Continuous Magnifications Manually & Motorized Controlled By Handle



Dual Port Beam Splitter, One For Assistant Tube, Another For Digital Camera.

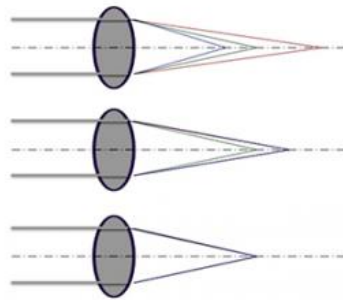


LED And Halogen, Can Use Together At The Same Time or Separately



Yellow Filter, Green Filter And Small Spot Included

A41.1952 Details

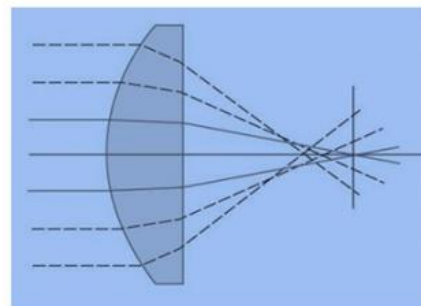
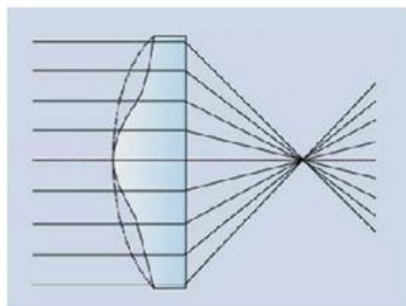


Complex Achromatic Objective Lens

Optical design of apochromatic correction can not only red green and blue three colors. Can correct the aberration of red, blue two color lights. Improve image resolution, contrast and depth of field

Aspheric Lighting Technology, Better Light Gathering Effect

The spherical illumination can not refract the light to the same surface, and cause the light to be more dispersed on the surface. The aspheric technology can increase the concentration effect and improve the brightness.



WF12.5X High Point Eyepiece

The unique design of the optical system, convenient for doctors with glasses.



A41.1952 Details



A41.1952 Camera System

Configure the wireless mouse operation, without the computer, free access to high definition images. The product interface is rich, HDMI and USB are synchronously output, high speed SD cards are photographed or recorded video. At the same time, it has the same screen image contrast, HDR (wide dynamic), image freezing, image inversion, digital amplification and other functions. It is widely used in video conferencing, telemedicine, micrograph, video projection and other fields.

A41.1952 Dual Xenon Lamp

Xenon Lamp Timer

Display And Control Parameters



User Data Storage

A41.1950, A41.1951, A41.1952 Surgical Operation Microscope

A41.1950 Operating Microscope, is Best Choice for Neurosurgery, Brain Surgery Operation. It has one main head and one assistant head which can rotate 360° freely, using fiber-optic cable for coaxial illumination up to 100000 lux, **1:6 Zoom Body**, has total magnification 3x~16x, objective F=300mm or 250mm, featured with **Motorized Focusing**, and **8 Functions** foot switch or control handle, it is widely used in hospital for Neurosurgery, Brain Surgery, Spinal, Vascular operation, it can also used for Orthopedics, Hand, Chest, Burn And Plastic Surgery, or Dental, ENT, Andrology, Genitourinary, Animal Anatomy etc.

A41.1951 is the upgraded version, with built-in CCD camera & software, zoom objective F=200~450mm, 12 functions handle, and dual optical fiber LED + Halogen 100000 Lux light source.

A41.1952 is the highest model in this series, built-in 2 sets Xenon 300W Light, magnetic lock, and 10 functions handle, it can meet most of surgery operation work with best quality & control.

Features:

- Best Choice For Neurosurgery, Brain Surgery, Dental, ENT Operation Microscope
- Dual Head Binocular, Eyepiece 12.5x, Motorized Continuous 1:6 Zoom 3x~16x
- Main Binocular Variable Angle 30-90°, Assistant's Binocular 30° Can Swing 90° or 270°
- 8,10,12 Functions Foot or Handle Control For Zoom, Auto Focus, X-Y Moving, Photo/Video Taking, etc.
- Dual Optical Fiber Coaxial Halogen, LED or Xenon Light 100000 lux, Stand Max Extend Range 1250mm

| | A41.1950 | A41.1951 | A41.1952 |
|------------|--|------------------|------------------|
| Main Usage | For Neurosurgery, Brain Surgery, Spinal, Vascular | | |
| Eyepiece | WF12.5x | | |
| Head | Dual Heads For Two People Operation, Assistant Binocular Can Swing 90° to 270° Against Main Head Motorized Swing Head In X Direction +/-45°, In Y Direction +90°, Can Stop At Any Angle Interpupillary Distance 55~75mm, Both Left & Right Eyetube Diopter Adjustable ±6D | | |
| Main Head | Inclined 30°~90° | Inclined 0°~200° | Inclined 0°~200° |

| | | | |
|-----------------------|---|---|--|
| Magnification | 3x~16x Continuous Zoom | 1.8x~21x Continuous Zoom | 1.8x~19x Continuous Zoom |
| View Field | Dia.74~12mm | Dia.13~110mm | Dia.12~113mm |
| Zoom Body | 1:6 Motorized Continuous Zoom, Parallel Light System | | |
| Assistant Head | Inclined 0° | | |
| Magnification | 3x~16x Continuous Zoom | 3x~16x Continuous Zoom | 3x~16x Continuous Zoom |
| View Field | Dia.74~12mm | Dia.74~12mm | Dia.94~13mm |
| Main Objective | F=300mm | F=200~450mm | F=200~500mm |
| Assistant Obj. | F=180mm | | |
| Focus | Motorized Focus, +/-25mm | Motorized Focus 200~450mm | Motorized Focus 200~500mm |
| Control Switch | 8 Functions Handle or Foot •X/Y Moving •Z Focusing •Zoom | 12 Functions Handle •X/Y Moving •Z Focusing •Zoom •Take Photo/Video •Review Photo/Video •Auto Focus •Brightness Adjust | 10 Functions Handle •Z Focusing •Zoom •Magnetic Lock •Take Photo/Video •Review Photo/Video •Auto Focus •Brightness Adjust |
| Filter | Yellow Filter, Green Filter, Small Spot | | |
| Camera | Built-in Digital Camera, With Software, Auto Focus Function | | |
| Stand | Four Wheels Moving Stand --Max Extended Length 1200mm --Max Rotatable Swing Angle of Arm 0~300° --Height From Objective to Floor 800~1250mm | | Four Wheels Moving Stand --Max Extended Length 1715mm --Max Rotatable Swing Angle of Arm 0~300° --Height From Objective to Floor 690~1452mm |
| Lock | Mechanical Lock | | Electro Magnetic Lock |
| Illumination | Dual Optical Fiber Coaxial 2 Halogen Cold Light, Light Spot Dia.50mm, Intensity 100000 Lux. | Dual Optical Fiber Coaxial LED + Halogen Cold Light, Light Spot Dia.50mm, Intensity 100000 Lux. | Dual Optical Fiber Coaxial Built-in 2 Sets Xenon 300W, Light Spot Dia.50mm, Intensity 100000 Lux. |
| Camera & LCD | None | Built-in Camera & Software | Built-in Camera & Software, LCD Monitor |
| Packing | 4 Cartons Total G.W 165Kg Volume 0.45CBM Head:595×460×230(mm)/14KG Body:890×650×265(mm)/41KG Control:1025×260×300(mm)/32KG Stand:890×865×200(mm)/78KG | | 4 Cartons Total G.W 215Kg Volume 0.45CBM Head:595×460×230(mm)/14KG Body:890×650×265(mm)/41KG Control:1025×260×300(mm)/32KG Stand:890×865×200(mm)/128KG |

A41.19 Series Model & Selection Guide



| Picture | Model | Magnification | Head & C-Mount | Standard Objective | Optional Objective | Optional | Light Source | Control | Package | Application |
|---------|----------|--|---|--------------------------|--|---|---|---|---|---|
| | A41.1921 | 6 Steps, 2.7x, 4.5x, 7.2x, 10.8x, 18x, 27x | One Head 0°-200° | F=250mm | F=175mm F=200mm F=300mm F=350mm F=400mm F=450mm F=180-300mm F=200-500mm | Assistant Head Beam Splitter SLR Adapter Phone Holder CCD Adapter | LED 60000 lux | Manual | 3 Cartons, Total G.W 111Kg, Volume 0.381CBM | ENT Dental |
| | A41.1926 | 2.5x-21x | One Head 0°-200° | F=250mm | F=175mm F=200mm F=300mm F=350mm F=400mm F=450mm F=180-300mm F=200-500mm | Assistant Head Beam Splitter SLR Adapter Phone Holder CCD Adapter | LED 60000 lux | Manual | 3 Cartons, Total G.W 111Kg, Volume 0.381CBM | ENT Dental |
| | A41.1931 | 3 Steps, 6x, 10x, 16x | Dual Head 90° 45°+45° | F=200mm | F=175mm F=250mm F=300mm F=350mm F=400mm F=450mm | Beam Splitter SLR Adapter Phone Holder CCD Adapter | Halogen 60000 lux | 2 Function Foot Switch Z (Focus) | 3 Cartons, Total G.W 104Kg, Volume 0.346CBM | Ophthalmology Fundus Surgery |
| | A41.1932 | 3 Steps, 6x, 10x, 16x | Dual Head 45°+45° | F=200mm | F=175mm F=250mm F=300mm F=350mm F=400mm F=450mm | Beam Splitter SLR Adapter Phone Holder CCD Adapter | Halogen 60000 lux | 6 Function Foot Switch X/Y/Z | 3 Cartons, Total G.W 104Kg, Volume 0.346CBM | Ophthalmology Fundus Surgery |
| | A41.1936 | Motor Zoom 4.5x-27.3x | Dual Head 30°-90°+45° | F=200mm | F=175mm F=250mm F=300mm F=350mm F=400mm F=450mm | Beam Splitter SLR Adapter Phone Holder CCD Adapter | Halogen Dual Fiber 100000 lux | 8 Function Foot Switch X/Y/Z/Zoom | 4 Cartons, Total G.W 165Kg, Volume 0.45CBM | Ophthalmology Fundus Surgery |
| | A41.1941 | 3 Steps, 6x, 10x, 16x | Dual Head 45°+45° | F=200mm | F=175mm F=250mm F=300mm F=350mm F=400mm F=450mm | Beam Splitter SLR Adapter Phone Holder CCD Adapter | Halogen 60000 lux | 2 Function Foot Switch Z (Focus) | 3 Cartons, Total G.W 104Kg, Volume 0.346CBM | Orthopedics, Plastic Surgery, Hand Surgery, Thoracic Surgery |
| | A41.1942 | 3 Steps, 6x, 10x, 16x | Dual Head 45°+45° | F=200mm | F=175mm F=250mm F=300mm F=350mm F=400mm F=450mm | Beam Splitter SLR Adapter Phone Holder CCD Adapter | Halogen 60000 lux | 6 Function Foot Switch X/Y/Z | 3 Cartons, Total G.W 104Kg, Volume 0.346CBM | Orthopedics, Plastic Surgery, Hand Surgery, Thoracic Surgery |
| | A41.1945 | Motor Zoom 4x-24x | Dual Head 30°-90°+45° | F=200mm | F=175mm F=250mm F=300mm F=350mm F=400mm F=450mm | Beam Splitter SLR Adapter Phone Holder CCD Adapter | Halogen Dual Fiber 100000 lux | 8 Function Foot Switch X/Y/Z/Zoom | 4 Cartons, Total G.W 165Kg, Volume 0.45CBM | Orthopedics, Plastic Surgery, Hand Surgery, Thoracic Surgery |
| | A41.1960 | Motor Zoom 3x-16x | Dual Head 30°-90°+0° Beam Splitter | F=300mm Or F=250mm | F=175mm F=200mm F=250mm F=300mm F=350mm F=400mm F=450mm | SLR Adapter Phone Holder CCD Adapter | Halogen Dual Fiber 100000 lux | 8 Function Handle or Foot Switch X/Y/Z/Zoom | 4 Cartons, Total G.W 169Kg, Volume 0.45CBM | Neurosurgery Brain Surgery Dental ENT |
| | A41.1951 | 1.8x-21x | Dual Head 0°-200°+0° Beam Splitter Built-in CCD Software | Built-in F=200-450mm | / | SLR Adapter Phone Holder | LED +Halogen Dual Fiber 100000 lux | 12 Function Handle X/Y/Z/Zoom Auto Focus XY Pendulum Photo/Video Brightness | 4 Cartons, Total G.W 169Kg, Volume 0.45CBM | Neurosurgery Brain Surgery Dental ENT |

A41.19 Series Optional Accessories

OPTO-EDU

| Optional Accessories | | Optional For | Cata. No |
|----------------------|---|--|--|
| Objective |  | F=175mm | A52.1941-175 |
| | | F=200mm | A52.1941-200 |
| | | F=250mm | A52.1941-250 |
| | | F=300mm | A52.1941-300 |
| | | F=350mm | A52.1941-350 |
| | | F=400mm | A52.1941-400 |
| | | F=450mm | A52.1941-450 |
| Zoom Objective |  | F=180-300mm | A41.192x Series A52.1941-180300 |
| | | F=200-500mm | A41.192x Series A52.1941-200500 |
| Head |  | Assistant Binocular Head | A41.192x Series A53.1941 |
| Beam Splitter |  | Wedge-shaped Splitter, 1 Port | A41.192x Series A55.1941 |
| | | Beam Splitter, 2 Ports | A41.193x Series A41.194x Series A55.1942 |
| Adapter |  | SLR Digital Camera Adapter, For Canon or Nikon (Need Confirm Which Brand When Order) | A41.192x Series A41.193x Series A41.194x Series A41.195x Series All Models A55.1943 |
| | | Mobile Phone Adapter & Holder | A41.192x Series A41.193x Series A41.194x Series A41.195x Series All Models A55.1944 |
| | | Digital CCD Camera Adapter | A41.192x Series A41.193x Series A41.194x Series A41.195x Series All Models A55.1945 |
| Digital Camera |  | 38M, 1/2.3", Output HDMI+USB+TF Card, HDMI Resolution Photo 60M, Video 2K@30FPS, 1080p@60FPS, USB Resolution 2.0M, HDMI+USB Output At Same Time, USB Measuring Function, Input DC12V, C/CS Mount, Including HDMI Cable, USB Cable, Remote Controller, Adapter, Manual, 16G TF Card | A41.192x Series A41.193x Series A41.194x Series A41.195x Series All Models A59.4231 |
| Light Source |  | Xeon Light Source, 250W | A41.193x Series A41.194x Series A41.195x Series A56.4844 |
| BIOM System Kit |  | For Fundus Surgery, Splitter+Holder+130°+90° Lens, Mounting Kits For Zeiss, Leica, Topcon, Takagi, Corder | A41.193x Series A55.1931 |



Opto-Edu (Beijing) Co., Ltd.

☎ 0086 13911110627

✉ sale@optoedu.com

🌐 cnoec.com

F-1501 Wanda Plaza, No. 18 Shijingshan Road, Beijing 100043, China