



1/2.8" Sony CMOS Lcd Digital Microscope Camera 12.5" 1080p HDMI 2.0M A59.4950

Our Product Introduction

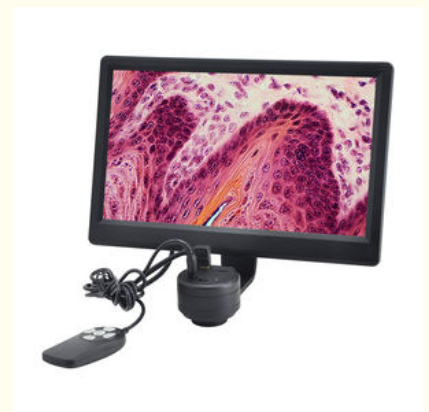
Basic Information

- Place of Origin: China
- Brand Name: CNOEC, OPTO-EDU
- Certification: CE, Rohs
- Model Number: A59.4950
- Minimum Order Quantity: 1 pc
- Price: FOB \$1~1000, Depend on Order Quantity
- Packaging Details: Carton Packing, For Export Transportation
- Delivery Time: 5~20 Days
- Payment Terms: T/T, West Union, Paypal
- Supply Ability: 5000 pcs/ Month



Product Specification

- Resolution: 2.0M
- Expose Mode: Rolling Shutter
- Maximum Resolution: 1920 X 1080 (2,073,600 Pixels)
- Sensor Optical Format: 1/2.8" (6.058mm(H) X 4.415mm(V))
- Pixel Size: 2.9 μ m X 2.9 μ m
- Dynamic Range: 128dB
- SNR(Signal Noise Ratio): 30dB
- Spectral Characteristics: 380~650nm
- Exposure Capability: Real-time Auto, Single Auto, Manual Adjustment
- White Balance: Real-time Auto, Single Auto, Manual Adjust RGB Separately
- Highlight: microscope accessory, parts of the microscope



More Images



for more products please visit us on cnoec.com

Product Description

LCD Digital Microscope Camera, 12.5", 1080p HDMI, 2.0M A59.4950

A59.4951 is a professional imaging system of camera integrated with displayer, which uses high-performance CMOS on image capture and adopts high-resolution fog LCD to truly restore images. With multi-angle and multi-joint rotation, the display is designed flexibly and easy to use, which meets the requirement of fast and efficient. Equipped with wired controller to facilitate operation.

As a standard configuration, it provides built-in and efficient image capture software, which is convenient for you to use quickly.

- ◆ HDMI 2.0MP HD Preview And Snapshot
- ◆ Remarkable Color Reduction
- ◆ High Dynamic Range And High Sensitivity SONY CMOS
- ◆ Standard C-mount, External Camera System
- ◆ Equipped With 12.5" HD 1080P Displayer
- ◆ The Displayer Rotatable At Multiple Angles And Joints

Real time image preview, one button snapshot, continuous take photo and record.

Parameter adjustment such as exposure, white balance, resolution, etc.

Customize cross lines.

HDR wide dynamic of antiglare.

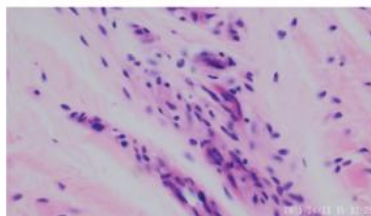
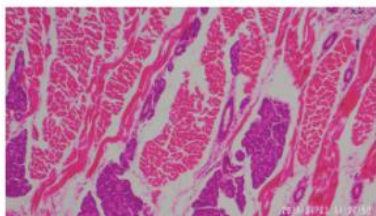
Freez, sharpness adjustment, cross lines, record mode, language settings, formatting, color adjustment, spectrum Image quality adjustment, fast preview, image rotation, etc.

A59.4950 Integrated Screen Camera, Professional Imaging System

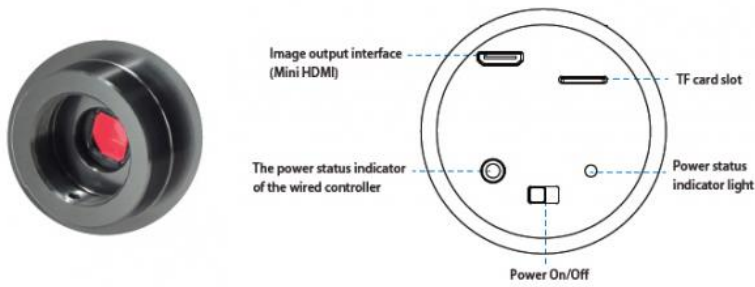
A59.4950 Integrated Screen Camera, Professional Imaging System	
Camera specifications	
Image Sensor	SONY CMOS IMX291 Super Wide Dynamic CMOS Sensor
Expose Mode	Rolling Shutter
Maximum Resolution	1920 x 1080 (2,073,600 pixels)
Sensor Optical Format	1/2.8" (6.058mm(H) x 4.415mm(V))
Pixel Size	2.9µm x 2.9µm
Dynamic Range	128dB
SNR(Signal Noise Ratio)	30dB
Spectral Characteristics	380~650nm
Exposure Capability	Real-time Auto, Single Auto, Manual Adjustment
White Balance	Real-time Auto, Single Auto, Manual Adjust RGB Separately
Display (preview)Resolution	HDMI:1920X1080P60
Record Format	Snapshot Picture Format:JPG Resolution:1920x1080 Record Video Format:MOV Resolution:1920X1080P30,1280x720P60
Record Route	TF Card(Maximum Support 128G,Support Hot Plug)
Camera Interface Parameter	
Camera Interface	C mount Thread(1 x1/32)
Image Output Interface	HDMI TYPE C(Mini HDMI)
Monitor Parameters	
Size	12.5"
Type	a-Si TFT-LCD/IPS
Resolution	1920x1080
Color Display	16.7M
Brightness	300 Nit
Contrast	800:1
Visible Angle	170° Horizontal & Vertical
Power Supply	Adapter: Input:AC100~240V/50~60Hz Output:DC12V/5A/60W Monitor:USB-A-Output:DC5V/2A×3
Image Input Interface	HDMI1,HDMI2



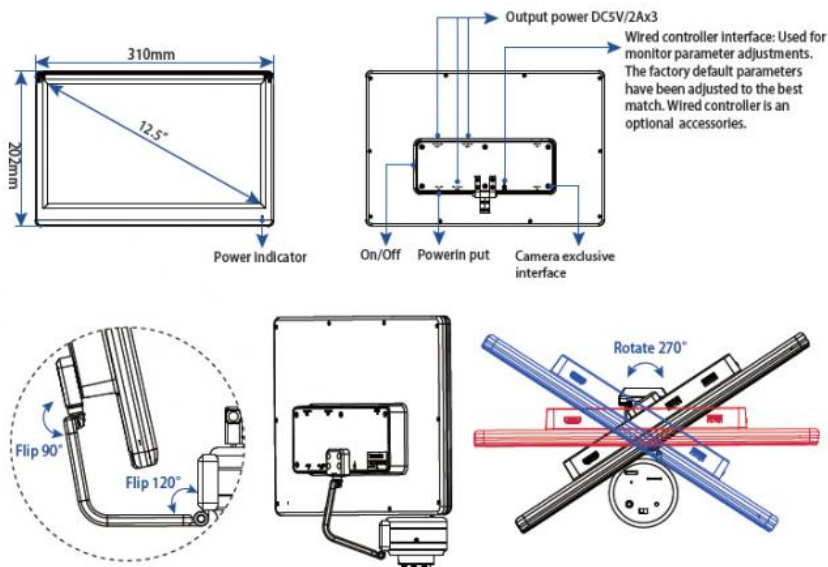
01 A59.4950 is a professional imaging system of camera integrated with displayer, which uses high-performance CMOS on image capture and adopts high-resolution fog LCD to truly restore images. With multi-angle and multi-joint rotation, the display is designed flexibly and easy to use, which meets the requirement of fast and efficient inspection. Equipped with wired controller to facilitate operation.



- 02** Use 1/2.8 inch SONY CMOS IMX291 ultra wide dynamic ultra low illumination sensor camera, excellent color reduction, to help you get the sharpest image effect.

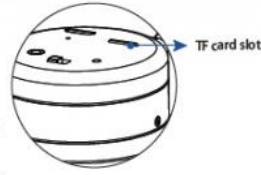


- 03** Complete solution - one device can realize multiple functions; Equipped with 12.5 inches full HD displayer, display from different joint rotation and flip (Rotate 270°, Flip 120°).



04 As a standard configuration, it provides built-in and efficient image capture software, which is convenient for you to use quickly.

- Real time image preview, one button snapshot, continuous take photo and record.
- Parameter adjustment such as exposure, white balance, resolution, etc.
- Customize cross lines.
- HDR wide dynamic of ant glare.
- Freez, sharpness adjustment, cross lines, record mode, language settings, formatting, color adjustment, spectrum Image quality adjustment, fast preview, image rotation, etc.



Rich Functions			Play menu		
Picture mode	Card inserted	Auto white balance	Menu	Play/Pause	
Recording	There is no card	Manual white balance	Fast forward	Select up and down	
Recording	Triple snapshot	One-time white balance	backward	Stop	
Play	Time-lapse snapshot	AE	Next		
Video mode	Freeze	One-time exposure	Previous		
Interval record	Auto white balance	Manual exposure			

05 LCD Digital Camera For Microscope Upgrade

A59.4950 Upgrade in 2019!	A59.3520
Sony 1/2.8" CMOS Max 60 Fps, 1080p Full HD High Dynamic & Low Light	Panasonic 1/2.9" CMOS Max 30 Fps
	None
Special Designed Firmware Separately For Biological & Stereo Microscope, For Halogen & LED Light, Can Switch Easily In Menu To Get Best Image	
Left/Right & Up/Down View Angle Free Adjustable In All Direction	Only Up/Down Angle Adjustable

 <p>2 HDMI Input Port</p>	 <p>Only 1 HDMI Input Port</p>
 <p>3 USB 5V2A Power Supply Port For Ring Light & Mobile Phone</p>	<p>None</p>
 <p>1.5M Line Control Included Avoid Multi Cameras's Interference, Remove Line Control Can Avoid Wrong Settings By Unauthorerized People</p>	<p>Infrared Controller May Influnence Other Cameras Working</p>
<p>Strong Metal Frame & High Quality Surface Finish</p>	<p>Plastic Body, Not Strong Enough</p>
<p>12.5" Full HD 1080p LCD Screen With Better Color</p>	<p>9.7" Screen, No Color Correction</p>
<p>Real Color Reproduction, Clear & High Brightness Image Quality</p>	<p>Low Screen Brightness</p>
<p>Independent Developed Color Temperature Control System, Upgrade For Life Time</p>	<p>Panda 7700 95LUX Color Temperature Control System, Cannot Upgrade</p>



Opto-Edu (Beijing) Co., Ltd.

☎ 0086 13911110627

✉ sale@optoedu.com

🌐 cnoec.com

F-1501 Wanda Plaza, No. 18 Shijingshan Road, Beijing 100043, China