



## 2.4G USB WIFI Cmos Microscope Camera OPTO-EDU A59.4908 3 Years Warranty

Our Product Introduction

for more products please visit us on [cnoec.com](http://cnoec.com)

### Basic Information

- Place of Origin: China
- Brand Name: CNOEC, OPTO-EDU
- Certification: CE, Rohs
- Model Number: A59.4908
- Minimum Order Quantity: 1 pc
- Price: FOB \$1~1000, Depend on Order Quantity
- Packaging Details: Carton Packing, For Export Transportation
- Delivery Time: 5~20 Days
- Payment Terms: T/T, West Union, Paypal
- Supply Ability: 5000 pcs/ Month



### Product Specification

- Product Name: OPTO-EDU A59.4908 China Wholesale Cmos Microscope Camera
- Resolution: WF10x/20
- Output: USB, WIFI
- WIFI: 2.4G
- Power Supply: Micro-USB (5V DC)
- Certificate: CE, Rohs
- Warranty: 3 Years
- Filter: Green
- Service: Feedback Wihtin 12 Hours
- Sensor: CMOS Sensor
- Packing Size: 30x 23x 11cm
- Highlight: **microscope accessory, parts of the microscope, compound microscope parts**



### More Images



## Product Description

### OPTO-EDU A59.4908 China wholesale cmos microscope camera

1. Built-in WIFI module support connection to all platform : Android, IOS, Windows.
2. Freely view micro image on your mobile phone, iPhone, iPad, tablet, PC by WIFI.
3. 5.0M high resolution high sensitive CMOS sensor to restore all true color.
4. 4500mAh lithium battery support working time for 8 hours, with battery security design

Resolution	WF10x/20
Output	USB, WIFI
WIFI	2.4G



## Dual WIFI & USB Microscope Digital Eyepiece

**A59.4908** 



-  5.0M High Sensitive CMOS Sensor
-  WIFI Mode Connect Mobile Phone, Tablet, iPad, PC Freely
-  USB 2.0 For Data High Speed Transfer
-  C-Mount & Eyepiece Tube Connect All Kinds Microscopes
-  Professional Analysis Software Support 2 Split /4 Split Windows
-  Extra Hard Industrial Metal Housing

## PRODUCT DESCRIPTION

Hardware Configuration	
Imaging Sensor	APTINA MT9P001 CMOS(colorful)
Expose Mode	Rolling shutter
Maximum Resolution	5.0 M 2592 x 1944(5,038,848 pixels)
Sensor Optical Format	1/2.5" (5.70mm(H) x 4.28mm(V), Diagonal 7.13mm)
Pixel Size	2.2µm x 2.2µm
Dynamic Range	70.1dB
ADC	12-bit, 8-Bit R.G.B to PC
SNR (Signal Noise Ratio)	38.1dB
Spectral Characteristics	380-650nm(During Daytime Mode)
Maximum Transmission Frame Rate(USB mode)	10FPS@2592x1944, 15FPS@1920x1080, 1600x1200 40FPS@1280x960, 1280x720, 1024x768, 800x600, 640x480
Maximum Transmission Frame Rate(WIFI mode)	10FPS@2592x1944, 15FPS@1920x1080, 1600x1200 40FPS@1280x960, 1280x720, 1024x768, 800x600, 640x480
Binning Modes	1 x 1, 2 x 2
Exposure Capability	Real-time auto, Single auto, Manual adjustment
White Balance	automatic and manual
Software Interface	DirectShow
Record Format	<b>Snapshot</b> Picture Format: JPG, BMP, PNG, TIFF, PDF Resolution: 2592x1944, 1920x1080, 1600x1200, 1280x960, 1280x720, 1024x768, 800x600, 640x480 <b>Record</b> Video Format: MJPG format AVI file Resolution: 1920x1080, 1600x1200, 1280x960, 1280x720, 1024x768, 800x600, 640x480
Interface Parameter	
Wired Picture	Micro USB interface;USB 2.0 DC5.0V 500mA (wired picture)
Wireless parameter/Power Parameter	
Standard	802.11b/g/n
Operating Frequency Range	2.400~2.4835GHz
	802.11n 20MHz/40MHz

Available Channels	802.11b/g
	USA, Canada (FCC): 11 channels (2.412GHz-2.462GHz)
	Europe (CE): 13 channels (2.412GHz-2.472GHz)
	Japan (TELEC): 14 channels (2.412GHz-2.4835GHz)
Data Rate	802.11n: up to 300Mbps 1T1R
	802.11b: up to 11Mbps
	802.11g: up to 54Mbps
Transmission Power	11n HT40 mcs7: +16dBm+/-1.5dBm
Receiving Sensitivity	-61 dBm@10% PER at HT40 MCS7
	-68 dBm@10% PER at 54Mbps
	-85 dBm@10% PER at 11Mbps
Suggestion On Number Of Receiver On Different Resolution	10@640x480
	8@800x600
	6@1024x768
	5@1280x720
	5@1280x960
	4@1920x1080
The Wireless Work Instructions	3@2592x1944
	When there has not WIFI, LED lamp turn off
	When WIFI is opened but do not connect, LED is always lighting
	When WIFI is connected, LED flashes at the beginning and stay turn on afterward
	When WIFI is connected, LED flashes, about once per second, The greater the amount of data the faster it flashes, and it is about 10 times per second
Power-Up	When power quantity lower than 5%: power lamp, it will turn off after flashing three times
	Wired: direct-current 5V, power by USB cable Charge power: DC 5V 2A power plug
<b>Software Environment</b>	
USB Work Mode	
Windows System Demand	Microsoft® Windows® XP / 7 / 8 / 8.1/10(32 & 64 bit)
	CPU: equal or more than the second generation Intel core 2.8GHz
	Memory: 2G or more
	DVD-ROM (Need it during installing software)
WIFI Work Mode	
Windows System Demand	Microsoft® Windows® XP / 7 / 8 / 8.1/10(32 & 64 bit)
	CPU: equal or more than the second generation Intel core 2.8GHz
	Memory: 2G or more
	Internal wireless network card (support IEEE 802.11b/g/n)
iOS System Demand	iOS 8.0 or higher
Android System Demand	Android 4.0 or higher
	CPU: dual-core 1.7GHz or higher
	RAW memory: 1G or more
	Storage ROM: suggest 8G or larger
<b>Operating Environment</b>	
Operating Temperature	0°C ~ 40°C
Storage Temperature	-20°C ~ 60°C
Operating Humidity	30~80%RH
Storage Humidity	10~80%RH

## Product Display

### PRODUCT DISPLAY

A59.4908



○ WIIFI Camera 5.0M, With Wireless Antenna Design



○ 5.0M High Sensitive CMOS Sensor



○ Extra Hard Industrial Metal Housing



○ USB/WIFI Work Mode Switch & Indicator

○ MINI USB Port



## A59.4908 Standard Outfit

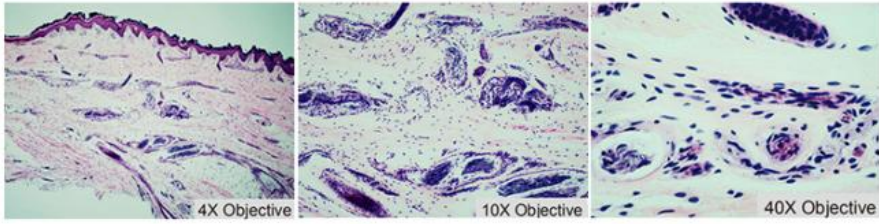


5. Fit all microscopes with standard C-Mount, and adapter for microscope eyetube 23.2mm/30mm/30.5mm (Optional A55.2002)
6. High quality USB 2.0 cable 1.8m support plug & play for high speed data transfer
7. 2.5K x 2K high speed, high pixel preview, capture image and video easily
8. Professional analysis software support OEM different language version.
9. Dynamic and still annotations, powerful measure functions for choice in (PC)
10. 2 split and 4 split screen to compare and analysis different images at same time in (PC)
11. Fix-time continuous capture photo function to track the whole changing process of observe things (PC)
12. Rotate picture with any angle when preview, no need to move the objective (PC)
13. Creative image manager to store, search, view user's image freely.
14. All hardware support hot plug/unplug without stopping software work (PC).
15. Aluminum alloy housing, extra-hard and wear-resistant .

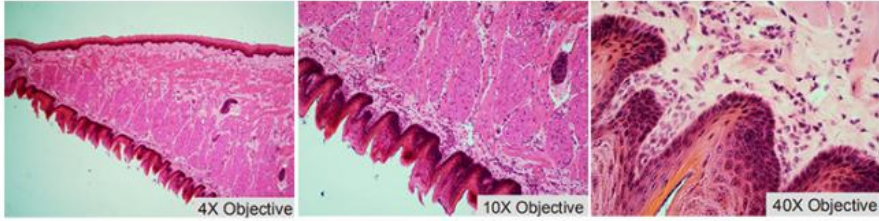
### **Application**

## Application Effect Show:

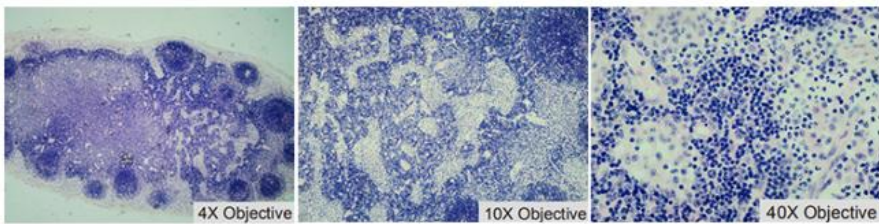
### Human skin sweat gland sections under different objectives



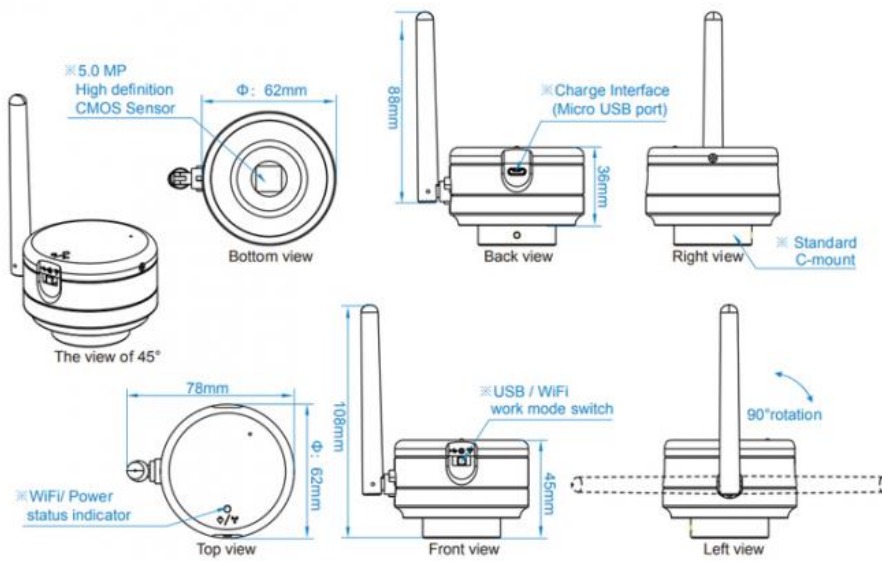
### Dog tongue sections under different objectives



### Rabbit lymph node section under different objectives



## Drawing Display





**Product Advantage**

## PRODUCT ADVANTAGE & CASE

### ☆ Software Features

Professional "Interactive system with same display on multi- screens" software and APP for Windows, iOS and Android. On your PC, iPhone, iPad, smart phones and tablets, you will easily get real-time display / snapshot / record.

Windows system



Micro Scope



iOS system



Ucam Plus



Android system



Ucam Plus



### ☆ WiFi Software

WiFi can connect many phones and pads at the same time, and people can share the image. It does not need to connect external network and does not waste any mobile data traffic; To switch different resolution in a moment. WiFi maximum supports 2592x1944 video output. Photo properties and parameter adjustment function are totally opened. It meets different specific imaging requirement.





It has both automatic and manual exposure, so it can acquire excellent image no matter in backlight or dark field.

Five degrees decompression zoom magnification. Single focal lens achieve zoom effect.

Display screen has a key to photo/video, and the camera does not move. It thoroughly solve ghosting of image that was caused by shaking.



## ☆ PC Software

With maximum 2.5K×2 K resolution and 10 fps frame rate, the device displays the zoomed screen easily;

Rotate preview image with any angle for getting better observation easily;

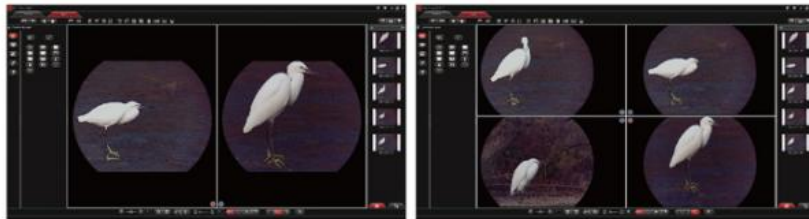
Support dynamic & static annotate, essay reviews is no longer difficult.



Support two screens and four screens display for comparative analysis;

Embed 13 image special effect tools ;

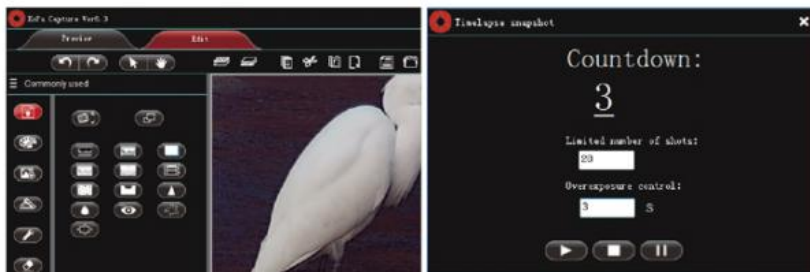
Support many languages for software operation.



Smart time-lapse to full tracking on process of changing;

One key to export measure results to Word\Excel\Outlook;

Support "Hot Plug", humanity design, fully consider for users.



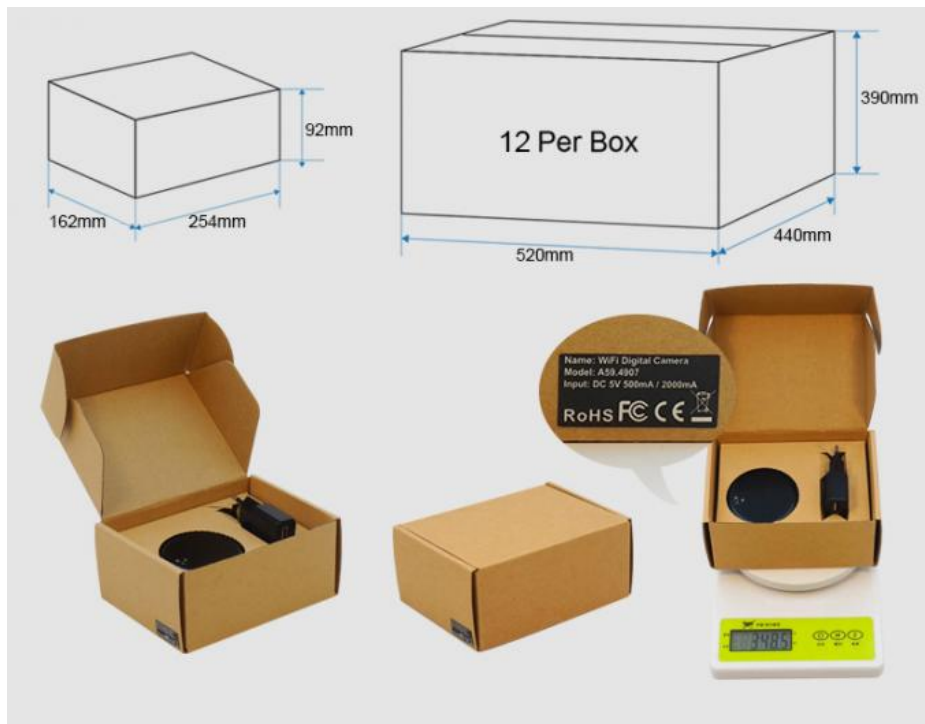
**More choice**

**Packing & Delivery**

Packing : Compact Design Box and Strong Master Carton

Shipping Time : 1-5 Days From Stock





#### About Us

**OPTO-EDU** is one of the top professional supplier for microscope from China, we focus in microscope & educational field for more than 20 years. As the top recommended seller for microscope on alibaba, we have full types microscopes, including biological microscope, stereo microscope Metallurgical microscope, inverted microscope, fluorescent microscope, polarized microscope, phase contrast microscope, dark field microscope, multi-viewing microscope, DIC microscope, AFM/STM/SPM microscope, zoom microscope, gem microscope, digital microscope, LCD microscope, comparison microscope Forensic microscope, and all kinds of microscope accessories.

Our customer comes from more than 104 countries, such as United States, Britain, Russia, Canada, Germany, Denmark, Poland, Sweden, UAE, Qatar, Saudi Arabia, Egypt, Mexico, Argentina, Chile, Brazil, Korea, Thailand, India, Indonesia, Philippines, and so on. We have been working tirelessly to supply China's nice quality production to the world market!



**Opto-Edu (Beijing) Co., Ltd.**

☎ 0086 13911110627

✉ sale@optoedu.com

🌐 cnoec.com

F-1501 Wanda Plaza, No. 18 Shijingshan Road, Beijing 100043, China