



5.0M Resolution Portable Microscope Camera A59.4907 5.0mp With Manual Focus Knob

Our Product Introduction

for more products please visit us on cnoec.com

Basic Information

- Place of Origin: China
- Brand Name: CNOEC, OPTO-EDU
- Certification: CE, Rohs
- Model Number: A59.4907
- Minimum Order Quantity: 1 pc
- Price: FOB \$1~1000, Depend on Order Quantity
- Packaging Details: Carton Packing, For Export Transportation
- Delivery Time: 5~20 Days
- Payment Terms: T/T, West Union, Paypal
- Supply Ability: 5000 pcs/ Month



Product Specification

- Product Name: OPTO-EDU A59.4907 Microscope Camera 5.0mp With Manual Focus Knob
- Resolution: 5.0M
- Output: USB, WIFI
- WIFI: 2.4G
- Power Supply: USB/Battery
- Certificate: CE, Rohs
- Warranty: 3 Years
- Service: Feedback Within 12 Hours
- Sensor: CMOS Sensor
- Packing Size: 12pcs /carton 54*37.5*31cm/11kg
- Highlight: microscope accessory, parts of the microscope, compound microscope parts



More Images



Product Description

OPTO-EDU A59.4907 microscope camera 5.0mp with manual focus knob

WiFi eyepiece A59.4907 adopts new CMOS which actually is 5 mega pixels, and it has the particular wifi technology. This makes it release form cables, and it provides conveniences and new experiences to customers. It truly liberates our eyes and support people watch through phones or pads simultaneously. It advances the pleasure of watching and provides the most relaxed photo save method. Another feature of WiFi eyepiece A59.4907 is that it can outfit jacket of different connector for different product. This solves customer's worries.

WiFi eyepiece A59.4907 is featured with versatility, complete functions, easy to operate, etc. It makes your existing ordinary optical microscope immediately upgrade to WiFi electronic microscope, after installing our apps and software, you can get real time observation, photos, videos on mobile phones, tablet PC at the same time, it makes your work efficiently.



OPTO-EDU

Dual WIFI & USB Microscope Digital Eyepiece

A59.4907

- 5.0M High Sensitive CMOS Sensor
- WiFi Mode Connect Mobile Phone, Tablet, iPad, PC Freely
- USB 2.0 For Data High Speed Transfer
- Professional Analysis Software Support 2 Split / 4 Split Windows
- Universal Adapter Rings Fits On All Kinds Of Eyepiece Dia.20-46mm

Camera Parameter

Resolution	5.0M
Output	USB, WIFI
WIFI	2.4G

PRODUCT DESCRIPTION

Hardware configuration	
Image Sensor	Omnivision OV5640 CMOS(colorful)
Scan Mode	Scan line by line
Maximum Resolution	5.0M 2592 x 1944 (5,038,848 pixels)
Sensor Optical Format	1/4"
Pixel Size	1.4µm x 1.4µm
Dynamic Range	68dB
ADC	12-bit, 8-Bit R.G.B to PC
SNR (Signal Noise Ratio)	38.1dB
Spectral Characteristic	380-650nm
Maximum Transmission Frame Rate (USB mode)	10FPS@2592x1944 15FPS@1920x1080 , 1600x1200, 1280x1024 30FPS@1280x960, 1280x720, 1024x768, 800x600, 640x480
Maximum Transmission Frame Rate (WiFi mode)	10FPS@2592x1944 15FPS@1920x1080 , 1600x1200, 1280x1024 30FPS@1280x960, 1280x720, 1024x768, 800x600, 640x480
Binning Modes	2 x 2
Exposure Capability	3.9ms - 320ms, Automatic and manual
White Balance	Automatic and manual
Software Interface	DirectShow
Capture Modes	Picture Resolution: 2592x1944, 1920x1080, 1600x1200, 1280x1024, 1280x960, 1280x720, 1024x768, 800x600, 640x480 Format: JPG,BMP,PNG,TIFF,PDF Video Resolution: 1920x1080, 1600x1200, 1280 x1024, 1280x960, 1280x720, 1024x768, 800x600, 640x480

	Format: MJPG format AVI file
Interface Parameter	
Illumination input interface	USB (A FEMALE NUT) , DC5.0V, Maximum 1.0A
Wired picture / Charger interface	Micro USB interface USB2.0 DC5.0V 500mA (wired picture) USB 2.0 DC5.0V 2A (when charging power)
Display/ Special illumination device	Hot shoe(no electrical connection)
Camera Interface	C Port, and it can customize other ports
Wireless Parameter/Power Parameter	
Standard	802.11b/g/n
Operating Frequency Range	2.400 ~ 2.4835GHz (subject to local regulations)
Available Channels	802.11n 20MHz/40MHz
	802.11b/g
	USA, Canada (FCC):11 channels (2.412GHz~2.462GHz)
	Europe (CE): 13 channels (2.412GHz~2.472GHz)
Data Rate	Japan (TELEC): 14 channels (2.412GHz~2.4835GHz)
	802.11n: up to 300Mbps 2T2R
	802.11b: up to 11Mbps
Transmission Power	802.11g: up to 54Mbps
	11n HT40 MCS7 : +16dBm +/-1.5dBm
Receiving Sensitivity	-61 dBm@10% PER at HT40 MCS7
	-68 dBm@10% PER at 54Mbps
	-85 dBm@10% PER at 11Mbps
Suggestion on number of receiver on different resolution	10@640x480
	8@800x600
	6@1024x768
	5@1280x720
	5@1280x960
	4@1920x1080
	3@2592x1944
The Wireless work instructions	When there has not WiFi, LED lamp turn off
	When WiFi is opened but do not connect, LED is always lighting
	When WiFi is connected, LED flashes at the beginning and stay turn on afterward
	When WiFi is connected, LED flashes, about once per second, The greater the amount of data the faster it flashes, and it is about 10 times per second
Build in battery	3.7V, 5000mAh, 26650 rechargeable lithium coin cells
Continuous working period	About 8 hours
Charging time	About 4 hours
Charge lamp,(internal battery)	Having problems in charging, charge lamp, red light flashes once per 0.5 second
	Low battery: charge lamp, green light breathes once per 1 second
	Medium battery: charge lamp, green light breathes once per 2.5 seconds
	High battery: charge lamp, green light breathes once per 4seconds
	Fully charged: charge lamp, there will be always green light
Power lamp,(internal battery)	When power quantity more than 20%: power lamp, there will be always green light
	When power quantity lower than 20%: power lamp, there will be always red light
	When power quantity lower than 5%: power lamp, it will turn off after flashing 10 seconds
Charge Cycle	500 times @50% power
Power-up	Wired: direct-current 5V, power by USB cable
	Wireless: internal battery Charge power: DC 5V 2A power plug
Software Environment	
USB work mode	
Windows system demand	Microsoft® Windows® XP/ 7 / 8 /8.1/10(32 & 64 bit)
	CPU: equal or more than the second generation Intel core 2.8GHz
	Memory: 2G or more
	DVD-ROM (Need it during installing software)
WiFi work mode	
Windows system demand	Microsoft® Windows® XP/ 7 / 8 /8.1/10(32 & 64 bit)
	CPU: equal or more than the second generation Intel core 2.8GHz
	Memory: 2G or more
	Internal wireless network card
iOS System Demand	iOS6.0 or higher
Android system demand	Android3.0 or higher
	CPU: dual-core 1.7GHz or higher
	RAM memory: 1G or more
	Storage ROM: suggest 8G or larger
Operating Environment	
Operating temperature	0℃~ 40℃
Storage temperature	-20℃~ 60℃
Operating Humidity	30~80%RH

Product Display

PRODUCT DISPLAY

A59.4907



○ Charge/WiFi/Battery Lamp



○ Illumination Power Input, Mini USB Output



A59.4907 Standard Outfit





○ Universal Adapter Ring Set of 7 Can Fit All Kinds of Microscope & Telescope Eyepiece Dia. 20-48



Camera Feature



Manual Focus Knob:



Revolutionary manual focus knob on the camera , it can focus quickly and easily in long range and extend working distance and magnifications.



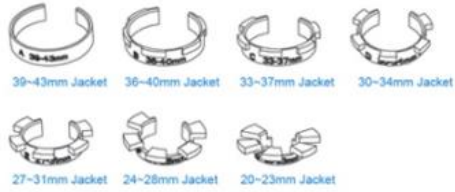
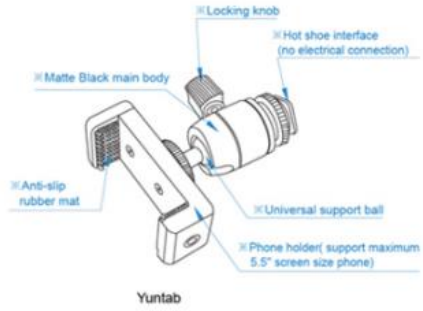
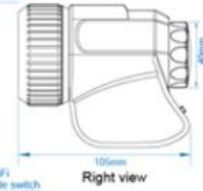
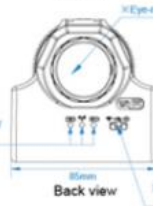
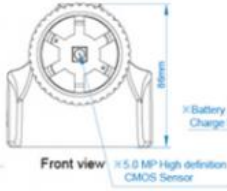
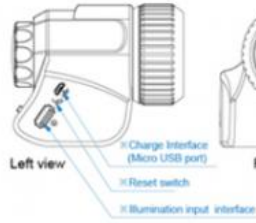
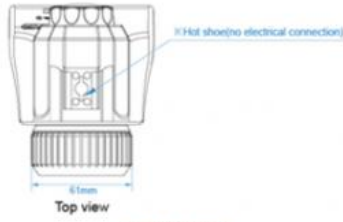
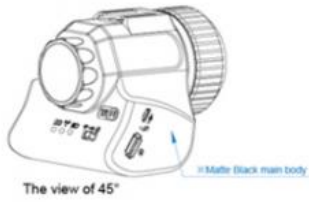
Revolutionary manual focus knob on the camera , it can extend working distance and magnifications



Revolutionary manual focus knob on the camera , it can extend working distance and magnifications

Effect Show

Drawing Display:



PRODUCT ADVANTAGE & CASE

☆ Hardware Features

5.0 Mega pixels color CMOS, maximum 2592×1944 live display , high speed 10FPS frame rate (when in USB work mode);

It has attached standard USB 2.0 charge port, and it is very convenient to charge phones;

It has attached Micro USB port, and it can realize high data rate transmission with PC computer.



It has WiFi mode. Cross-platform connecting with phones/pads/PC can truly achieve mobile monitoring;

Built-in real 5000mAh lithium battery under multiple security control, support continuous 8 hours working;

Preset the hot shoe (no electric). Display screen can rotate 360 degree and freely orientate. It is very convenient to watch at any angle.



Universal adopter fits eyepiece that the diameter is 20-46 mm. To clamp eyepiece without damage, and easily lock Single Lens Reflex and different astronomical telescopes;

The USB cable adopt 24AWG/2C 28AWG/1P standard high-speed USB cable, plug & play, detail shows quality.



☆ Software Features

Professional "Interactive system with same display on multi- screens" software and APP for Windows, iOS and Android. On your PC, iPhone, iPad, smart phones and tablets, you will easily get real-time display / snapshot / record.

Windows system



Micro Capture

iOS system



Ucam Plus

Android system



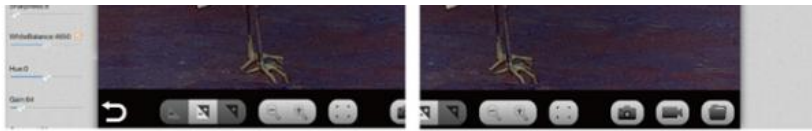
Ucam Plus



☆ WiFi Software

WiFi can connect many phones and pads at the same time, and people can share the image. It does not need to connect external network and does not waste any mobile data traffic; To switch different resolution in a moment. WiFi maximum supports 2592x1944 video output. Photo properties and parameter adjustment function are totally opened. It meets different specific imaging requirement.





It has both automatic and manual exposure, so it can acquire excellent image no matter in backlight or dark field.

Five degrees decompression zoom magnification. Single focal lens achieve zoom effect.

Display screen has a key to photo/video, and the camera does not move. It thoroughly solve ghosting of image that was caused by shaking.



☆ PC Software

With maximum 2.5K×2 K resolution and 10 fps frame rate, the device displays the zoomed screen easily;

Rotate preview image with any angle for getting better observation easily;

Support dynamic & static annotate, essay reviews is no longer difficult.



Support two screens and four screens display for comparative analysis;

Embed 13 image special effect tools ;

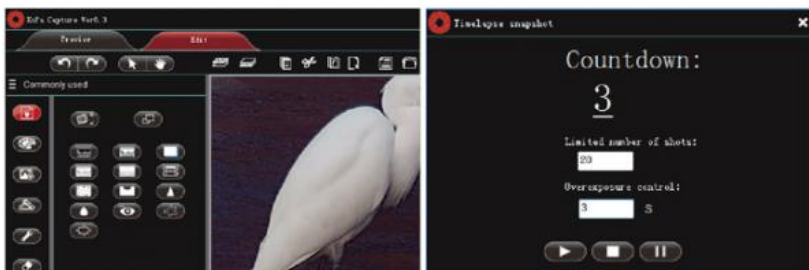
Support many languages for software operation.



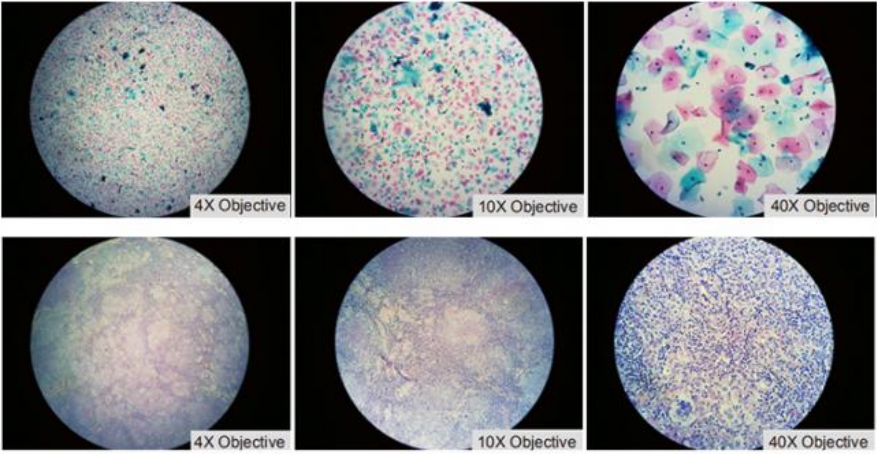
Smart time-lapse to full tracking on process of changing;

One key to export measure results to Word\Excel\Outlook;

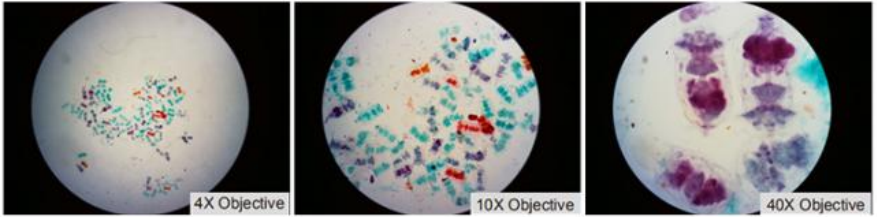
Support "Hot Plug", humanity design, fully consider for users.



Pathological sections under different objectives



Paramecium sections under different objectives




More choice

MORE CHOICES




A59.4904

 BUY NOW



A59.4905

 BUY NOW



A59.4910

 BUY NOW



A59.4902

 BUY NOW



A59.4902B

 BUY NOW



A59.4908

 BUY NOW

Packing & Delivery

Packing : Compact Design Box and Strong Master Carton
Shipping Time : 1-5 Days From Stock



About Us

OPTO-EDU is one of the top professional supplier for microscope from China, we focus in microscope & educational field for more than 20 years. As the top recommended seller for microscope on alibaba, we have full types microscopes, including biological microscope, stereo microscope Metallurgical microscope, inverted microscope, fluorescent microscope, polarized microscope, phase contrast microscope, dark field microscope, multi-viewing microscope, DIC microscope, AFM/STM/SPM microscope, zoom microscope, gem microscope, digital microscope, LCD microscope, comparison microscope Forensic microscope, and all kinds of microscope accessories.

Our customer comes from more than 104 countries, such as United States, Britain, Russia, Canada, Germany, Denmark, Poland, Sweden, UAE, Qatar, Saudi Arabia, Egypt, Mexico, Argentina, Chile, Brazil, Korea, Thailand, India, Indonesia, Philippines, and so on. We have been working tirelessly to supply China's nice quality production to the world market!



Opto-Edu (Beijing) Co., Ltd.



0086 13911110627



sale@optoedu.com



cnoc.com

F-1501 Wanda Plaza, No. 18 Shijingshan Road, Beijing 100043, China