



Opto-Edu Digital Metallurgical Microscope Trinocular 12V 50W Halogen Light Source

Our Product Introduction

for more products please visit us on cnoec.com

Basic Information

- Place of Origin: China
- Brand Name: CNOEC, OPTO-EDU
- Certification: CE, Rohs
- Model Number: A13.2606-A
- Minimum Order Quantity: 1 pc
- Price: FOB \$1~1000, Depend on Order Quantity
- Packaging Details: Carton Packing, For Export Transportation
- Delivery Time: 5~20 Days
- Payment Terms: T/T, West Union, Paypal
- Supply Ability: 5000 pcs/ Month

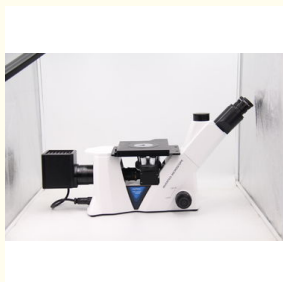


Product Specification

- Certificate: CE, Rohs
- Magnification: 50x100x200x500x
- Drawtube: Trinocular
- Eyepiece: WF10x/22
- Nosepiece: 4 Holes
- Objective: LWD Metallurgical Infinity Plan BF 5x10x20x50x
- Working Stage: Three Layer Mechanical Stage
- Focusing: Coaxial Coarse & Fine
- Light Source: 12V50W Halogen
- Power Supply: 100~240V
- Highlight: **reflected light microscope, halogen lamp microscope**



More Images



Product Description

Opto-edu China Manufacturer Wholesales Price Advanced Optical Metallurgical Industrial Lab Used Microscope

Items	A13.2606 Invered Metallurgical Microscope	A13.2606	A13.2606 -BD	Cata. No.
Head	Seidentopf Trinocular Head Inclined 30°, Interpupillary Distance 48~76mm, Light Split Switch E100:P0 / E20:P80	●	●	A53.2643
Eyepiece	WF10x/22mm, Dia.30mm, High Eyepoint, Diopter Adjustable	●	●	A51.2621-1022
	WF10x/22mm, Dia.30mm, High Eyepoint, Diopter Adjustable, With Micrometer X-0.1mm*180 Div / Y-Single Line	●	●	A51.2622-1022
	WF15X/16mm, Dia.30mm, High Eyepoint, Diopter Adjustable	○	○	A51.2621-1516
	WF20X/12mm, Dia.30mm, High Eyepoint, Diopter Adjustable	○	○	A51.2621-2012
Nosepiece	Quintuple	●		A54.2610-N925
	Quadruple(Specially For Bright&Dark Field objectives)		●	A54.2610-N924
Metallurgical LWD Infinity Plan BF (Bright Field) Objectives	LPL 5x/0.13, W.D.=16.04mm	●		A5M.2633-5
	LPL10x/0.25, W.D.=18.48mm	●		A5M.263310
	LPL 20x/0.40, W.D.=8.35mm	●		A5M.2633-20
	LPL 50x/0.70, W.D.=1.95mm	●		A5M.2633-50
	LPL 80x/0.80, W.D.=0.85mm	○		A5M.2633-80
	LPL 100x/0.90(Dry), W.D.=1.00mm	○		A5M.2633-100
Metallurgical LWD Infinity Plan BD (Bright & Dark Field) Objectives	LPL 5x/0.13BD, W.D.=16.04mm		●	A5M.2634-5
	LPL10x/0.25BD, W.D.=18.48mm		●	A5M.2634-10
	LPL 20x/0.40BD, W.D.=8.35mm		●	A5M.2634-20
	LPL 50x/0.70BD, W.D.=1.95mm		●	A5M.2634-50
Working Stage	Stage Size 210×180mm, Moving Range 50×50mm, Scale 0.1mm, Round Plate Size Dia.110mm	●	●	A54.2601-S11T
	Round Plate With Oval Hole	○	○	A54.2601-MD400
Focusing	Coaxial Coarse & Fine Focusing, Coarse Focusing Travel Range: 10mm, Fine Focusing Div. 0.002mm, Fine Stroke Per Rotation 0.2mm	●	●	
Polarizing	Analyzer + Polarizer Set	●	●	A5P.2602
Illumination	Koehler Illumination Halogen 12V/50W, Input Voltage 100V~240V	●	●	A56.2613-12V50W
	Koehler Illumination 5W LED, Input Voltage 100V~240V	○	○	A56.2651-5W
Power	ECO, Auto Power Off System. Power Off Automatically Upon User Leaving 10 Minutes, Power On Automatically Upon User Approaching Detected, This Function Can Be Shut Down Manually	○	○	A56.2660
Filter	Blue, Dia.34mm	●	●	A56.2616-34B
	Green, Dia.34mm	○	○	A56.2616-34G
	Amber, Dia.34mm	○	○	A56.2616-34A
	Grey, Dia.34mm	○	○	A56.2616-34N
	SLR Digital Camera Adapter For Canon, 100% Light For Camera Portt	○	○	A55.2622-BC

Our Product Introduction

for more products please visit us on cnoec.com

Adapter	SLR Digital Camera Adapter For Nikon, 100% Light For Camera Port	○	○	A55.2622-BN
	C-Mount 0.5x, Focus Adjustable	○	○	A55.2601-05
	C-Mount 0.75x, Focus Adjustable	○	○	A55.2601-75
	C-Mount 1.0x, Focus Adjustable	○	○	A55.2601-10
	Digital Eyepiece Camera Adapter, Dia. 23.2mm/25mm	○	○	A55.2610
Package	Packing Size: 660mmx590mmx325mm			
Weight	Gross Weight: 17 kgs, Net Weight: 12.5 kgs			
Note: "●" In Table Is Standard outfits, "○" Is Optional Accessories.				



Seidentopf Trinocular Head
Light Split Switch E100 : P0 / E20 : P80



Large Working Stage Size 210x180mm, Moving
Range 50x50mm, Scale 0.1mm



Metallurgical LWD Infinity Plan BF (Bright
Field) & BD (Bright & Dark Field) Objectives



With Micrometer X-0.1mm*180
Div / Y-Single Line



WF10x/22mm, Dia.30mm, High Eyepoint,
Diopter Adjustable

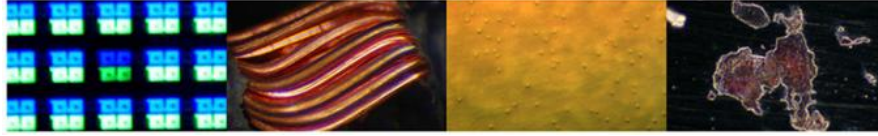
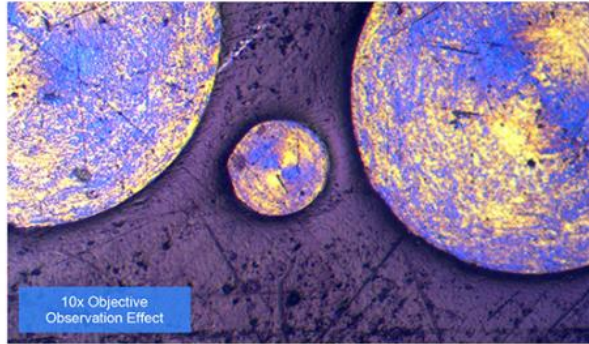


Analyzer & Polarizer for
simple polarizing observation

The Metal Surface Under Microscope

Wide Range Of Applications

A13.2806 Inverted Metallurgical Microscope is new developed ideal model for research work in lab, combined Bright Field, Dark Field, Polarizign Observation, can be used widely in metal, mineral electrical field.



Opto-Edu (Beijing) Co., Ltd.

☎ 0086 13911110627

✉ sale@optoedu.com

🌐 cnoec.com

F-1501 Wanda Plaza, No. 18 Shijingshan Road, Beijing 100043, China