



## OPTO-EDU A12.0911 50mm Binocular Biological Microscope

Our Product Introduction

### Basic Information

- Place of Origin: China
- Brand Name: CNOEC, OPTO-EDU
- Certification: CE, Rohs
- Model Number: A12.0911
- Minimum Order Quantity: 1 pc
- Price: FOB \$1~1000, Depend on Order Quantity
- Packaging Details: Carton Packing, For Export Transportation
- Delivery Time: 5~20 Days
- Payment Terms: T/T, West Union, Paypal
- Supply Ability: 5000 pcs/ Month



### Product Specification

- Applications: Laboratory|Hobby
- Certification: CE|Rohs
- Drawtube: Binocular|Trinocular
- Illumination: N.A.1.25 Kohler Illumination Condenser, With Iris Diagram, Center Adjustable
- Product Name: Biological Microscope
- Theory: Biological Microscope
- Highlight: **OPTO-EDU A12.0911, Binocular Biological Microscope, 50mm Biological Microscope**



for more products please visit us on [cnoec.com](http://cnoec.com)

## Product Description

Our Product Introduction

for more products please visit us on [cnoec.com](http://cnoec.com)

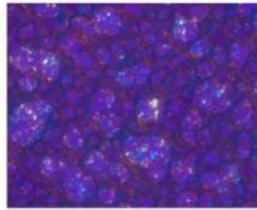
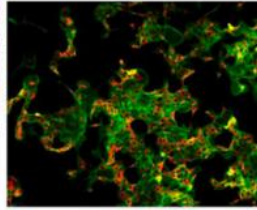
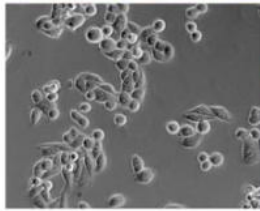
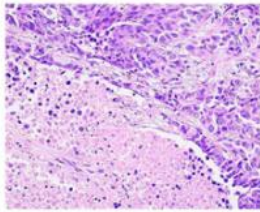
| A12.0911  | B   | T   |              |
|---|---|---|--------------|
| Optical System  | Infinity Chromatic Aberration Correction System   |   |              |
| Head  | Binocular, 360° Rotation, Interpapillary Distance 50-75mm   | Trinocular, Light Split 8:2, 360° Rotation, Interpapillary Distance 50-75mm |              |
| Eyepiece  | WF10x/20mm Wide Field Eyepiece  |   |              |
| Nosepiece   | 5 Holes Nosepiece   |   |              |
| Objective   | Infinity Plan Achromatic 4x10x20x40x100x  |   |              |
| Working Stage   | Double Layer Mechanical Stage 150mm×162mm   |   |              |
| Condenser   | N.A.1.25 Kohler Illumination Condenser, With Iris Diagram, Center Adjustable  |   |              |
| Focusing  | Low-Position Coarse And Fine Coaxial Focusing Structure, With Tension Adjustment And Upper Limit Mechanism  |   |              |
| Light Source  | 3W LED, With LCD Screen, Adjustable Color Temperature (3000K-5600K), Brightness Memory Function   |   |              |
| Power   | Wide Range 100V -240V   |   |              |
| <b>A12.0911 Biological Microscope, Optional Accessories</b> |   |   |              |
| Eyepiece  | High Eye-point Wide Field Plan Eyepiece PL10X20mm, Diopter Adjustable   | A51.0904-N1020T   |              |
|   | High Eye-point Wide Field Plan Eyepiece PL10X22mm, Diopter Adjustable   | A51.0904-N1022T   |              |
| Plan Achromatic Objective                                   | 2x/0.06, WD=5.03mm (Field Complement Is Needed)   | A52.0906-2  |              |
|   | 4x/0.10, WD=11.9mm  | A52.0906-4  |              |
|   | 10x/0.25, WD=12.1mm   | A52.0906-10   |              |
|   | 20x/0.40, WD=1.5mm  | A52.0906-20   |              |
|   | 40x/0.65, WD=0.36mm   | A52.0906-40   |              |
|   | 60x/0.85, WD=0.30mm   | A52.0906-60   |              |
| Phase Contrast  | Plan Achromatic Objective   | 10x/0.25, WD=12.1mm   | A5C.0937-10  |
|   |   | 20x/0.40, WD=1.5mm  | A5C.0937-20  |
|   |   | 40x/0.65, WD=0.36mm   | A5C.0937-40  |
|   |   | 100x/1.25, WD=0.18mm  | A5C.0937-100 |
|   | Phase Contrast Slide  | 10x, 40x  | A5C.0915-P1  |
|   |   | 20x, 100x   | A5C.0915-P2  |
|   | N.A. 1.25 Koehler Illuminator DISC Phase Contrast Condenser Group, for 10x, 20x, 40x, 100x Phase Contrast Observation   |   | A5C.0912-KP  |
|   | N.A. 1.25 Koehler Illuminator DISC Phase Contrast + Dark Field Condenser Group, For 10x, 40x, 100x Phase Contrast Observation And For 4x-40x Dark Field Observation |   | A5C.0912-KPD |
| Head  | 30° Inclined Gemel Binocular Viewing Head, 360° Rotatable, Interpupillary Distance Range: 50-75mm   | A53.0907-B30R   |              |
|   | 30° Inclined Gemel Trinocular Viewing Head, Fixed Spectroscopical Ratio R:T=8:2, 360° Rotatable, Interpupillary Distance Range: 50-75mm                             | A53.0907-T30R   |              |
| C-Mount   | 0.35x Focusing C-mount  | A55.0925-35   |              |
|   | 0.5x Focusing C-mount   | A55.0925-05   |              |
|   | 0.65x Focusing C-mount  | A55.0925-65   |              |
|   | 1x Focusing C-mount   | A55.0925-10   |              |
| Dark Field  | Dark Field Slide, For 4x-40x Objectives (Use As Bottom Light Barrier In LED Fluorescence Microscopes)   |   |              |
| Polarizing  | Polarizer   | A5P.0915-P  |              |
|   | Analyzer  | A5P.0915-A  |              |
| Package   | EPE And Paper Carton(Single Package:57.1*55.4*27.8CM)   |   |              |
| Fluorescence module   | B1 LED Fluorescence Module, Light Intensity Adjustable, Center Wavelength Of LED Is 470nm   |   |              |
|   | G1 LED Fluorescence Module, Light Intensity Adjustable, Center Wavelength Of LED Is 560nm   |   |              |
|   | UV2 LED Fluorescence Module, Light Intensity Adjustable, Center Wavelength Of LED Is 385nm  |   |              |
|   | B4 LED Fluorescence Module, Light Intensity Adjustable, Center Wavelength Of LED Is 455nm   |   |              |



## A12.0911 Biological Microscope



## Product Details



Based on advanced optical and mechanical technology, A12.0911 is specially designed for teaching, lab and clinical diagnosis. With excellent optical system and complete accessories, A12.0911 supports for bright/dark field, phase contrast, fluorescence, presents clear micro image. Integrated with intellectualized design, such as adjustable color temperature, A12.0911 creates an easy and efficient work experience.



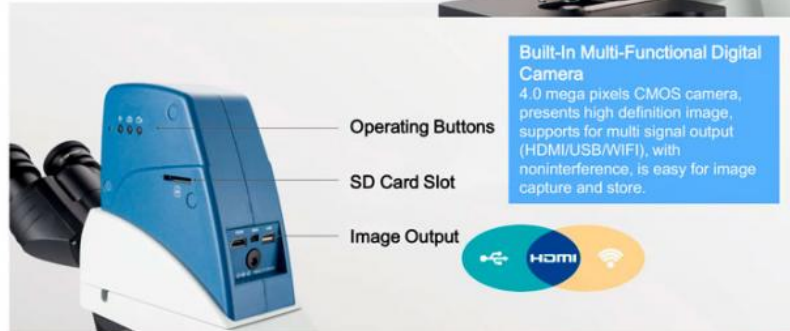
**Engineering Structure With Practicality And Aesthetic**  
 The double - layer mechanical stage of A12.0911 adopts line rail for overload protection at the end of x axis, and avoids the potential hazard caused by moving rack.



**Cool Or Warm, Choose You Want**  
 Most samples is suitable to be observed under natural white light, some water white samples should adopts warm color for outline and detail check. Unnecessary to add filters or change light source, color temperature range from 3000K to 5600K, A12.0911 is able to meet different demands for best image.



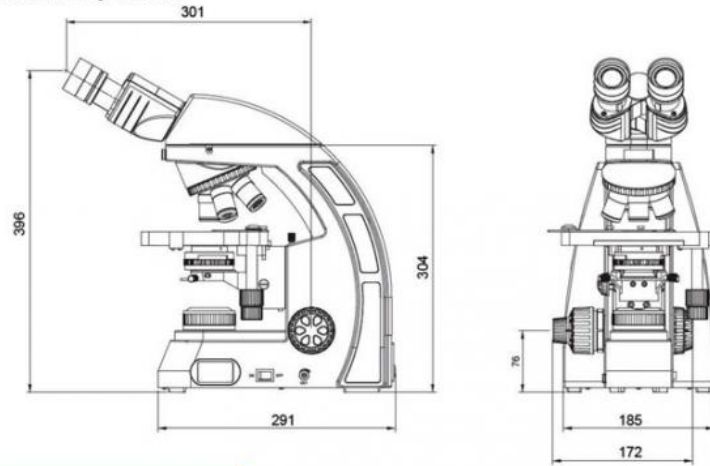
**Intelligent Illumination System**  
 A12.0911 with code nosepiece is able to automatically remember the light intensity of each objective which you are used to, helps to improve the work efficiency and decrease the visual fatigue. LCD beside the frame shows color temperature and light intensity, as well as the objective magnification you are using, is helpful to make record of experiment condition.



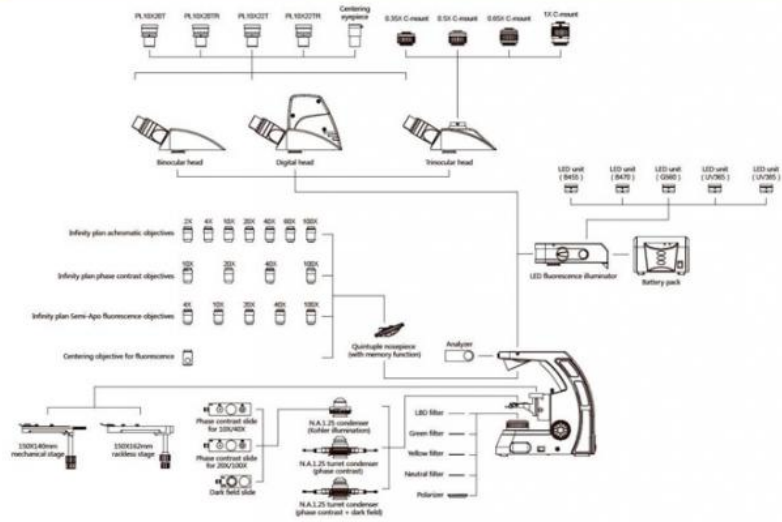
**Optional:**  
 A: N.A. 1.25 Koehler illuminator DISC phase contrast condenser group, for 10x, 20x, 40x, 100x phase contrast observation  
 B: N.A. 1.25 Koehler illuminator DISC phase contrast + dark field condenser group, for 10x, 40x, 100x phase contrast observation and for 4x 40x dark field observation  
 C: Phase contrast slide, for 10x, 40x phase contrast observation/Phase contrast slide, for 20x, 100x phase contrast observation  
 D: Phase Contrast Objective  
 E: Centered eyepiece (Φ30mm)

## Product Size (mm)

### A12.0911-B System Size



## Product Diagram



Opto-Edu (Beijing) Co., Ltd.

☎ 0086 13911110627

✉ sale@optoedu.com

🌐 cnoec.com

F-1501 Wanda Plaza, No. 18 Shijingshan Road, Beijing 100043, China