



OPTO-EDU A12.1502 WF10x Compound Optical Microscope

Our Product Introduction

Basic Information

- Place of Origin: China
- Brand Name: CNOEC, OPTO-EDU
- Certification: CE, Rohs
- Model Number: A12.1502
- Minimum Order Quantity: 1 pc
- Price: FOB \$1~1000, Depend on Order Quantity
- Packaging Details: Carton Packing, For Export Transportation
- Delivery Time: 5~20 Days
- Payment Terms: T/T, West Union, Paypal
- Supply Ability: 5000 pcs/ Month



Product Specification

- Eyepiece: WF10x
- Nosepiece: 4 Holes
- Objective: Achromatic 4x10x40x100x; Infinity Plan 4x10x40x100x
- Working Stage: Double Layer Mechanical
- Condenser: Abbe N.A.1.25
- Focusing: Coaxial Coarse & Fine
- Light Source: LED
- Power Supply: 100~240V
- Highlight: **A12.1502, OPTO-EDU, WF10x Compound Optical Microscope**



for more products please visit us on cnoec.com

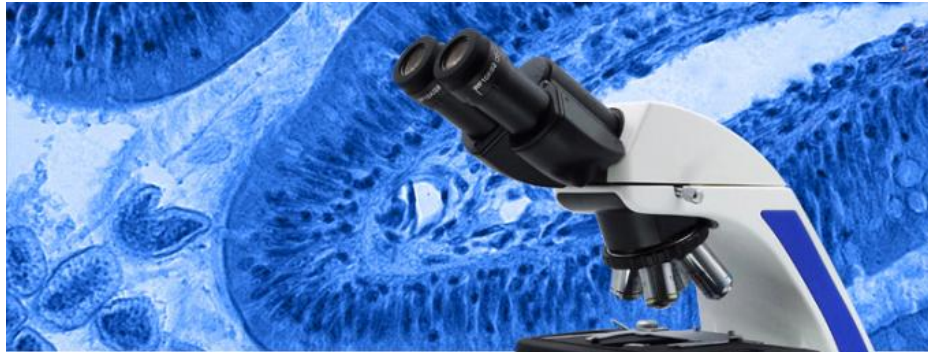
Product Description

OPTO-EDU A12.1502 Advanced Compound Laboratory Biological Optical Microscope

Product Description

A12.1502 is a type of professional biological microscope for laboratory or hospital, equipped with high quality infinity optical system, provides excellent optical performance. Because of the streamline figure and pastel color, it has more beautiful appearance. With the large size double layer mechanical stage, it can provides the more comfortable operation and operational room.

- Infinity Optical System
- Binocular And Trinocular Head Available, Interpupillary Distance 48~75mm, 360° Rotatable
- Eyepiece Diopter Adjustable
- Wide Field Eyepiece WF10X/F.N.22mm
- Infinite High Contrast Chromatic-free Full Plan Objectives
- Large Size Mechanical Stage 216x150mm, Graphite Surface, Moving Range75mmx55mm
- External Illumination, 3W/LED



BIOLOGICAL MICROSCOPE for laboratory

- 3W LED Kohler Illumination With Removable Light House
- Wide Field Eyepiece WF10X/F.N.22mm
- Large Size Mechanical Stage 216x150mm
- Infinity Optical System




A12.1502 Laboratory Biological Microscope		B	T	AB	AT
Optical System	Infinity Optical System	o	o		
Head	Binocular, Inclined at 30°, Interpupillary 48-75mm, 360° Rotatable	o		o	
	Trinocular, Inclined at 30°, Interpupillary 48-75mm, 360° Rotatable		o		o
Eyepiece	WF10x/22mm, Dia.30mm, High Eyepoint, Dioper Ajustment -/+5	o	o		
	WF10x/20mm, Dia.30mm, High Eyepoint, Dioper Ajustment -/+5			o	o
Nosepiece	Backward Quadruple Nosepiece				
Objective	Infinite Plan High Contrast Chromatic-free 4X, 10X, 40X, 100X		o		
	High Contrast Chromatic-free 4X, 10X, 40X, 100X				o
Condenser	Abbe Condenser NA1.25, with Iris Diaphragm, Center Adjustable				
Focusing	Coaxial Coarse and Fine Adjustment, Fine Division 0.002mm, Coarse Stroke 37.7mm/Rotation, Moving Range 24mm				
Working Stage	Large Size Double Layer Mechanical Stage 216x150mm, Graphite Surface, Moving Range 75mmx55mm		o		
	Large Size Double Layer Mechanical Stage 142x132mm, Graphite Surface, Moving Range 75mmx50mm				o
Light Source	Kohler Illumination, 3W/LED, Brightness Adjustable		o		
	External Illumination, 3W/LED, Brightness Adjustable				o
Adapter	C-Mount 1.0x		o		o

Size and Weight

Product Size	27x10x20x38.5CM
Net Weight	6.7KG





 A12.1502-T Laboratory Biological Microscope

Optional Accessories:

A12.1502 Laboratory Biological Microscope Optional Accessories		
Eyeiece	WF16X/F.N.15mm	A51.1502-16

	WF20X/F.N.12mm	A51.1502-20
Nosepiece	Backward Quintuple Nosepiece	A54.1502-5
Dark Field	Dark Field Condenser, Dry, N.A.1.25	A5D.1502-D
	Dark Field Condenser, Immersion, N.A.1.25~1.36	A5D.1502-I
Polarizing	Polarizer & Analyzer	A5P.1501
Adapter	Eye-piece Tube Adapter	A55.1502-E
	C-Mount 0.5x	A55.1502-05



Product Details



01 HEAD

Binocular head with WF10x/22mm wide field eyepiece, 30° inclined, interpupillary 48-75mm.

02 NOSEPIECE

Backward quadruple nosepiece. Equipped with infinite plan high contrast chromatic-free 4X, 10X, 40X, 100X and high contrast chromatic-free 4X, 10X, 40X, 100X.

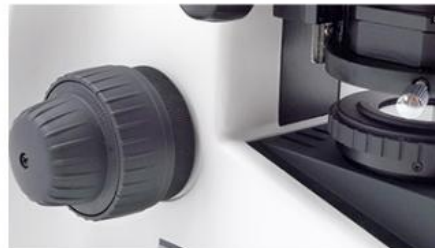


03 WORKING STAGE

Large size double layer mechanical stage 216x150mm, graphite surface, moving range 75mmx55mm.

04 FOCUSING

Low position designed, coaxial coarse and fine adjustment, fine division 0.002mm, coarse stroke 37.7mm/rotation, moving range 24mm.



05 CONDENSER

NA1.25 Kohler illumination condenser with iris diaphragm. Moving by precision metal cog-wheel gearing.

06 ILLUMINATION

3W LED light source, removable lighthouse for easy changing bulb.



07 SWITCH & POWER SOCKET

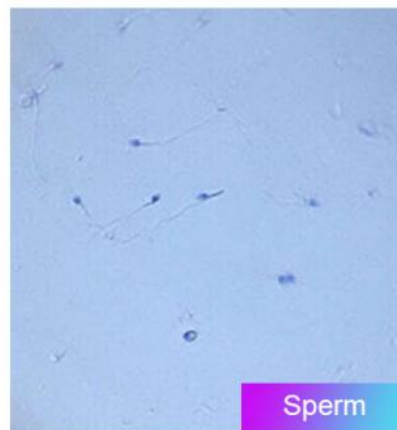
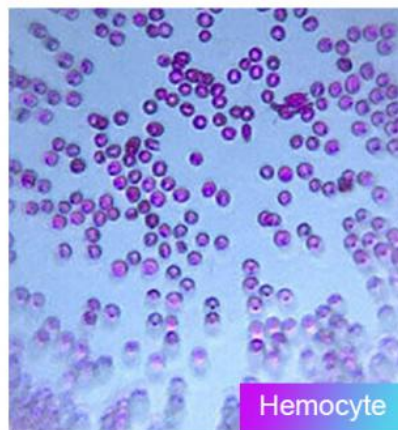
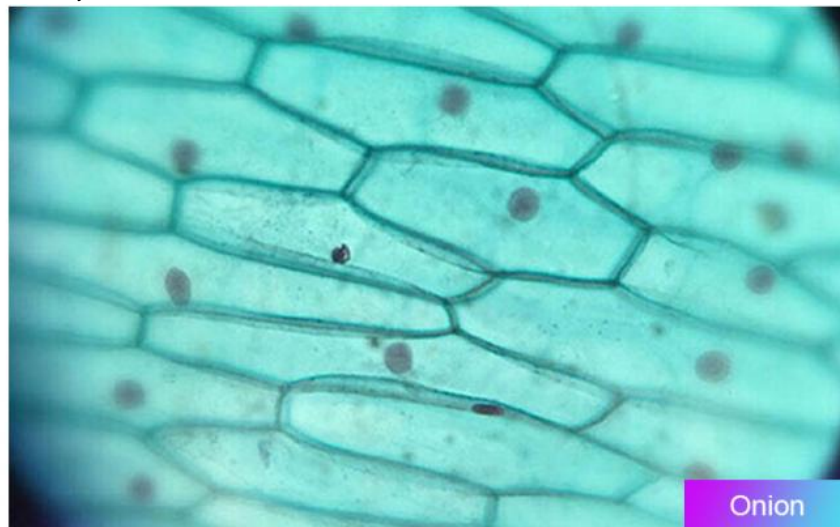
AC 100V-240V.

Related Products



Product Application

Biological microscope is widely used to observe biological slices, biological cells, bacteria and living tissue culture, fluid precipitation observation and research, while observing other transparent or translucent objects and powder, fine particles and other objects. It is also an ideal tools in hospital, teaching and academy field.



Packing & Shipping

PACKING: Polyfoam protection and strong carton.

Package	1 Set/Carton, 53x33x39CM
Gross Weight	10KG
Packing	Polyfoam Protection And Strong Carton
Shipping Time	5-20 Days After Receive The Deposit



SHIPPING TIME: 5-20 days after receive the deposit.



Contact Information

OPTO-EDU is a unique, long-term and excellent supplier of microscopes and educational instruments from China. We focus on the international market of microscopes and education instruments. At present our customers come from more than 80 countries, such as the United States, Britain, Russia, Canada, Germany, Denmark, Poland, Sweden, the United Arab Emirates, Qatar, Saudi Arabia, Egypt, Argentina, Korea, Thailand, Brazil and so on. OPTO-EDU as our trademark is well known in the professional field, our products ranked No.1 in Alibaba.com. We have been working tirelessly for the sale of high quality optical products and educational products made in China to the world market.

As one of the most professional and most dynamic suppliers of optical and educational products in China, we have been concentrating on this field for more than 10 years. We have created the most professional product database of microscope & educational instrument, with 5000+ products and 500+ professional suppliers in system. We can provide our customers with the most comprehensive range of products in the related field, from the primary entry products to professional-level solutions, to meet the different needs of customers in the field of scientific research, teaching, industry, agriculture and various industries.



Opto-Edu (Beijing) Co., Ltd.

☎ 0086 13911110627

✉ sale@optoedu.com

🌐 cnoec.com

F-1501 Wanda Plaza, No. 18 Shijingshan Road, Beijing 100043, China