



## 6x 50-80mm Adjustable Dental Operating Microscope

Our Product Introduction

for more products please visit us on [cnoec.com](http://cnoec.com)

### Basic Information

- Place of Origin: China
- Brand Name: CNOEC, OPTO-EDU
- Certification: CE, Rohs
- Model Number: A41.1901
- Minimum Order Quantity: 1 pc
- Price: FOB \$1~1000, Depend on Order Quantity
- Packaging Details: Carton Packing, For Export Transportation
- Delivery Time: 5~20 Days
- Payment Terms: T/T, West Union, Paypal
- Supply Ability: 5000 pcs/ Month



### Product Specification

- Eyepiece: 17.24x
- Head Magnification: 6x
- Interpupillary Distance: 50~80mm Adjustable
- Diopter: Both Left & Right Eyetube Diopter Adjustable  $\pm 5D$
- Zoom Body: 3 Steps Zoom: 0.6x, 1.0x, 1.6x
- Focusing: Fine Focusing Range 10mm
- Highlight: **6x dental operating microscope,**  
**50mm dental operating microscope,**  
**80mm dental operating microscope**



### More Images



## Product Description

### A41.1901 Series Operation Microscope Specification

A41.1901 Series Operating Microscopes, is the basic economical high quality series. It use fibre-optic cable for coaxial illumination, with 3 steps zoom body, has total magnification 2.3x~12x, featured with flexible handling and easy operation. It is widely used in hospital for ENT (ear-nose-throat), dental, ophthalmology, gynecology, surgery, orthopedics and etc.

## A41.1901

Series Operating Microscope,  
Dental, ENT, Ophthalmology, Gynecology



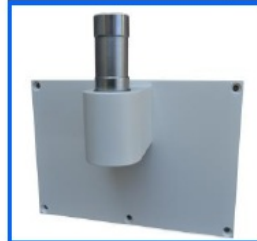
Use Real Shots





A41.1901-A

A41.1901 Series Operating Microscopes, is the basic economical high quality series. It use fibre-optic cable for coaxial illumination, with 3 steps zoom body, has total magnification 2.3x~12x, featured with flexible handling and easy operation. It is widely used in hospital for ENT (ear-nose-throat), dental, ophthalmology, gynecology, surgery, orthopedics and etc.



A54.1901-W



A54.1901-T



A54.1910-312B



A54.1910-112B

Model	A41.1901-A	A41.1901-C	A41.1901-CZ	A41.1901-B	A41.1901-D
Binocular Head	Straight			45° Tilted	
Main Usage	ENT, Surgery			Dental, Ophthalmology, Gynecology	
Total Magnification	With Objective F=200mm: 4.7x, 7.5x, 12x With Objective F=300mm: 3.0x, 5.0x, 8.0x				
Total Magnification (Optional)	With Objective F=250mm: 3.7x, 6.0x, 9.6x With Objective F=400mm: 2.3x, 3.8x, 6.0x				
Eyepiece	17.24x				
Head Magnification	6x				
Interpupillary Distance	50~80mm Adjustable				
Diopter	Both Left & Right Eyetube Diopter Adjustable ±5D				
Zoom Body	3 Steps Zoom: 0.6x, 1.0x, 1.6x				
Objective	F=200mm For Ear, Nose F=300mm For Ear, Nose			F=200mm For Ophthalmology F=300mm For Gynecology	
Objective (Optional)	F=400mm For Throat			F=250mm For Dental	
Focusing	Fine Focusing Range 10mm				
Filter	Green, Yellow Filters Built-in				
Balancing Arm	2-Part Arm With Universal Joints				
Stand	2-Part Column + Five Star Base With Caster	Table Mount Clamp	Column Mount, Customized To Customer	2-Part Column + Five Star Base With Caster	Table Mount Clamp
Illumination System	Coaxial Illumination, 10W LED, Brightness Adjustable, >30000 Lux				
Power Supply	Wide Range AC100~240V, DC12V 3A, 36W				
Video Adapter	Not Available				
A41.1901 Series Operation Microscope Optional Accessories					
Objective	F=250mm, For A41.1901-B, -D			A52.1901-250	
	F=400mm, For A41.1901-A, -C, -CZ			A52.1901-400	
Mount	Table Mount Clamp			A54.1901-T	
	Wall Mount Bracket			A54.1901-W	

Monitor Mount	Monitor Mount: 1 Fix Arm And 1 Gas Spring Arm With Tension Adjustable. Band Clamp. Fit 15-27" Screen. VESA Standard 75x75xmm & 100x100mm. Load Capacity 0~8 Kgs, Swivel 180°, Tilt -80°~+90°, Rotation 360°	A54.1910-112B
	Monitor Mount: 1 Fix Arm And 1 Mechanic Spring Arm With Tension Adjustable. Band Clamp. Fit 15-27" Screen. VESA Standard 75x75xmm & 100x100mm. Load Capacity 0~8 Kgs, Swivel 180°, Tilt -80°~+90°, Rotation 360°	A54.1910-312B

A41.1901 Series Operation Microscope Optical Characteristics												
Focal Length (mm)	F=200mm			F=250mm (Optional)			F=300mm			F=400mm (Optional)		
Zoom Body	1.6x	1.0x	0.6x	1.6x	1.0x	0.6x	1.6x	1.0x	0.6x	1.6x	1.0x	0.6x
Total Magnification	12x	7.5x	4.7x	9.6x	6.0x	3.7x	8.0x	5.0x	3.0x	6.0x	3.8x	2.3x
Linear Field (mm)	15.8	25.3	40.6	19.7	31.6	50.7	23.6	37.9	60.8	31.5	50.5	81.0
Exit Pupil Dia. (mm)	1.04	1.66	1.66	1.04	1.66	1.66	1.04	1.66	1.66	1.04	1.66	1.66
Exit Pupil Distance (mm)	15.30											
Resolution (LP/mm)	67.0	44.5	29.7	60.0	35.4	27.0	47.2	31.5	23.6	35.0	27.0	19.8



**Opto-Edu (Beijing) Co., Ltd.**

☎ 0086 13911110627

✉ sale@optoedu.com

🌐 cnoec.com

F-1501 Wanda Plaza, No. 18 Shijingshan Road, Beijing 100043, China