



Led Semi Auto Trinocular Stereo Microscope For Research Scientific Laboratory A12.1093-L

Our Product Introduction

for more products please visit us on cnoec.com

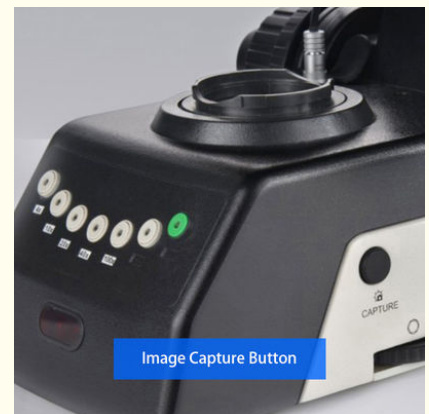
Basic Information

- Place of Origin: China
- Brand Name: CNOEC, OPTO-EDU
- Certification: CE, Rohs
- Model Number: A12.1093-L
- Minimum Order Quantity: 1 pc
- Price: FOB \$1~1000, Depend on Order Quantity
- Packaging Details: Carton Packing, For Export Transportation
- Delivery Time: 5~20 Days
- Payment Terms: T/T, West Union, Paypal
- Supply Ability: 5000 pcs/ Month

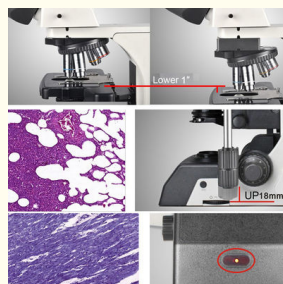


Product Specification

- Observation Method: Bright Field
- Main Body: ATL Semi-Auto Body + LED Illumination
- Head: Ergo Tilting Trinocular Head, Inclination 0°~35°
- Eyepiece: SW10x/25mm, High Eyepoint, Diopter Adjustable, Dia.30mm
- Nosepiece: Auto Coded Nosepiece, Sextuple, Backward
- Objective: N-PLN Infinity Plan Objective
- Highlight: **led trinocular stereo microscope, semi auto trinocular stereo microscope, research scientific laboratory trinocular stereo microscope**



More Images



Product Description

Tilting Trinocular 0-35°, EW10x/25mm, Auto Sextuple Nosepiece, Infinity Plan NIS60 4x10x20x40x100x, Rackless Stage 190x152/ 78x54mm, Auto Swing-Out Condenser NA0.9/0.25, Coaxial, Kohler Illumination Auto Adjust Brightness, 3W LED, ECO Function

Our Product Introduction

A12.1093 Laboratory Microscope, Semi-Auto



Auto Coded Nosepiece & Auto Condenser
Automatically swing-out and swing-in the top-lens element according to the objective lens that is selected via the intelligent linking.



Put Slides By One Hand
It is easy for operators to put slides by one hand due to the convex point guide mechanism.



Sapphire Glass Stage Insert
Mechanical stage with a gorilla glass insert is durable and allows operators to easily clear the stage. We have sapphire glass for your optional choice.

for more products please visit us on cnoec.com



Focusing System

Coaxial focusing system with low-position X-Y coaxial control knobs. The ergonomic design provides operators comfortable experience.

Nosepiece Rotating Buttons

This microscope has the function of automatically rotating nosepieces and adjusting the light intensity.

Low-position Control Knobs
The height of the stage control knobs can be adjusted up or down by 18mm to ensure a comfortable hand position, and with adjustable tension control



Left/Right Focusing Wheel Interchangeable

In order to better adapt to users with different operating habits, the focus and stage can be easily adjusted to the left or right hand position for operation

Auto Light Intensity Management

The Management system can automatically adjust to the suitable light intensity according to the different setup of objectives from the low to high magnifications, and reduce the eye fatigue at the same time. The long-life LED lamp can keep the light intensity and easy for maintenance.

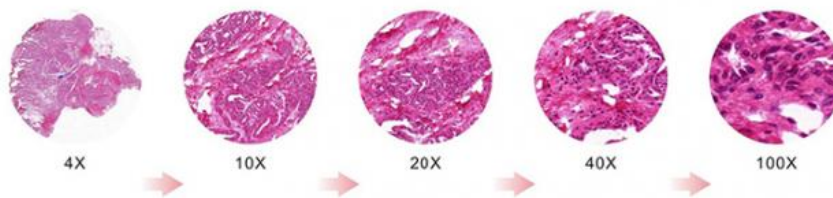




Image Capture Button
The digital camera could capture images just by pressing the black 'capture' button at the side of base

Remote Control Pad
Objectives could be switched by simply pressing the rotating buttons. User can also self-define two of the most commonly used objectives, and switch between these two objectives by pressing the green button.



Software Function



A59.2225



A59.2226

With high speed USB3.0 digital camera and professional image processing software, Opto-Edu microscope can work with computer to get various advanced function done easily. Real Time / Static Measure, 2D Image Scan & Stitching, 3D Depth of Field Fusion, Fluorescent Image Synthesis, Cell Counting and etc

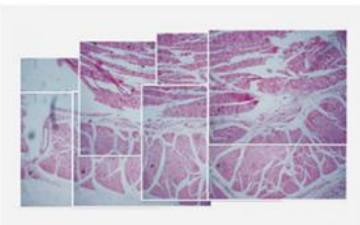
◆ Real Time / Static Measure

In cell observation and section observation, you need to use the measurement function. To determine the cell size, cell gap, synapse length and other data. The software can provide measurement of distance, angle, rectangle, circle, ellipse, etc.



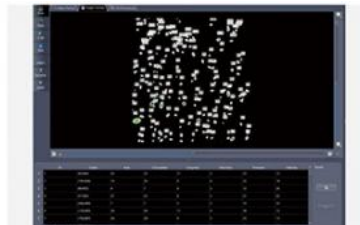
◆ 2D Image Scan & Stitching

By collecting and importing images in real time, the software can quickly stitch together to form a large-size and high-resolution image



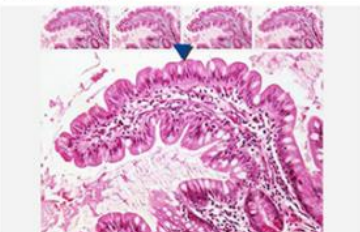
◆ Cell Counting

Customize cell counting requirements, automatically count and count the shape information of cells, including: size, location, volume, circumference, brightness, etc. And all data including processed images can be saved as excel sheet



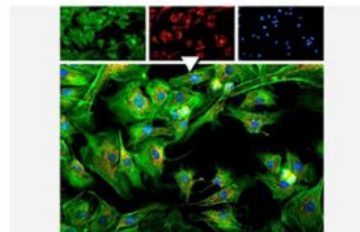
◆ 3D Depth Of Field Fusion

Users can collect multiple images with different focal lengths by fine-tuning the focal length, and synthesize one image for output. Suitable for specimens that require a certain depth of field or poorly made sections



◆ Fluorescent Image Synthesis

By collecting or importing images of different fluorescence channels, users can obtain images after fluorescence synthesis. For the image of each channel, the displacement in the x direction and y direction can be adjusted to achieve the fine-tuning effect



	A12.1095 is newly designed Full Auto Motorized Research Level Scientific Laboratory Microscope, equipped with electric platform, auto focus, electric objective conversion, touch screen controller and powerful imaging software; Through the precise connection between the parts, the functions of microscope observation, image acquisition and image processing are realized, and the repetitive operation is reduced. In addition, it can restore the microscope settings and parameter settings of the last operation, and improve the stability and accuracy of microscope imaging. Microscope operation can be so fast and efficient.				
Full Auto Motorized Research Level Scientific Laboratory Microscope		A12.1091	A12.1093	A12.1095	Cata.No.
Optical System	NIS60 Infinity Optical System	●	●	●	
Observation Method	Bright Field	●	●	●	
	Dark Field	○	○	○	
	Polarizing	○	○	○	
	Phase Contrast	○	○	○	
	Flourescent	○	○	○	
	DIC	○	○	○	
Main Body	A12.1091-H Manual Body + Halogen Illumination.	●			A54.1090-BH
	A12.1091-L Manual Body + LED Illumination.	●			A54.1090-BL
	A12.1093-H Semi-Auto Body + Halogen Illumination. Auto Nosepiece + Auto Condenser + Auto Brightness Adjust		●		A54.1090-ATH
	A12.1093-L Semi-Auto Body + LED Illumination. Auto Nosepiece + Auto Condenser + Auto Brightness Adjust		●		A54.1090-ATL
	A12.1095 Full Auto Body + LED Illumination. Auto Nosepiece + Auto Brightness + Auto X/Y/Z Stage+ Touch LCD Screen			●	
Head	Seidentopf Binocular Head, Inclined 30°, Interpupillary Distance 47-78mm	○	○	○	A53.1090-B
	Seidentopf Trinocular Head, Inclined 30°, Interpupillary Distance 47-78mm, 3 Level Light Split Switch E100:P0/E20:P80/E0:P100	●	○	●	A53.1090-T
	Ergo Tilting Trinocular Head, Inclination 0°~35°, Interpupillary Distance 47-78mm, 3 Level Light Split Switch E100:P0/E20:P80/E0:P100	○	●	○	A53.1090-TT
Eyepiece	SW10x/25mm, High Eyepoint, Diopter Adjustable, Dia.30mm	●●	●●	●●	A51.1090-1025
	SW10x/22mm, High Eyepoint, Diopter Adjustable, Dia.30mm	○	○	○	A51.1090-1022
	EW12.5x/16mm, High Eyepoint	○	○	○	A51.1090-12516
	WF15x/16mm, High Eyepoint, Diopter Adjustable, Dia.30mm	○	○	○	A51.1090-1516
	WF20x/12mm, High Eyepoint, Diopter Adjustable, Dia.30mm	○	○	○	A51.1090-2012
	Manual Nosepiece, Quintuple, Backward, Center Adjustable	○	○	○	A54.1091-5M
	Manual Nosepiece, Sextuple, Backward	●			A54.1091-6M
	Coded Nosepiece, Sextuple, Backward, For Auto Brightness Adjust	○			A54.1091-6C

Nosepiece	Auto Coded Nosepiece, Sextuple, Backward, Motorized Switch Objectives, Controlled By: 1. Shortcut Button On Right Side Of Base, Can Switch 2 Preseted Objectives Quickly 2. Remote Control Pad In Front Of Base, Press Each Button To Switch Objectives And Adjust The Light Intensity Automatically. 2 Buttons Can Be Self-Defined For Most Commonly Used Objectives, Press Green Button Can Swap Between Them	○	●	●	A54.1091-6A
	With Slot For Polarizing Compensator Slider Or DIC Slider	●	●	●	
	Protect Cover For Nosepiece Holes	●	●	●	A54.1091-C
NIS60 N-PLN Infinity Plan Objective	2x/0.06, W.D.7.5mm, Cover Glass 0.17mm	○	○	○	A52.1090-2
	4x/0.10, W.D.30mm, Cover Glass 0.17mm	●	●	●	A52.1090-4
	10x/0.25, W.D.10.2mm, Cover Glass 0.17mm	●	●	●	A52.1090-10
	20x/0.40, W.D.12mm, Cover Glass 0.17mm	●	●	●	A52.1090-20
	40x/0.65, W.D.0.7mm, Cover Glass 0.17mm	●	●	●	A52.1090-40
	50x/0.95(Oil), W.D.0.19mm, Cover Glass 0.17mm	○	○	○	A52.1090-50
	60x/0.8, W.D.0.3mm, Cover Glass 0.17mm	○	○	○	A52.1090-60
NIS60 APO Infinity Plan	100x/1.25(Oil), W.D.0.2mm, Cover Glass 0.17mm	●	●	●	A52.1090-100
	20x/0.75, W.D.1.1mm, Cover Glass 0.17mm	○	○	○	A52.1091-20
Working Stage	100x/1.45(Oil), W.D.0.13mm, Cover Glass 0.17mm	○	○	○	A52.1091-100
	Double Layer Mechanical Stage Full Size 302x152mm, Stage Table Size 190x152mm, Moving Range 78x32mm, Double Slide Holder, With Gorilla Glass Insert, Left Handle	○		○	A54.1092-GL
	Double Layer Mechanical Stage Full Size 302x152mm, Stage Table Size 190x152mm, Moving Range 78x32mm, Double Slide Holder, With Gorilla Glass Insert, Right Handle	●		○	A54.1092-GR
	Double Layer Mechanical Stage Full Size 302x152mm, Stage Table Size 190x152mm, Moving Range 78x32mm, Double Slide Holder, With Sapphire Glass Insert, Left Handle			○	A54.1092-SL
	Double Layer Mechanical Stage Full Size 302x152mm, Stage Table Size 190x152mm, Moving Range 78x32mm, Double Slide Holder, With Sapphire Glass Insert, Right Handle		●	○	A54.1092-SR
	Low Position Control Knob, Height Adjustable Up/Down 18mm, Convex Point Guide Mechanism For Easily Put Slide By One Hand, With Tension Adjustable Ring, With Safety Stop Screw	●	●	-	
	Full-Auto X/Y/Z Motorized Control Working Stage, Including Control Joy Stick, --Travel Range X:125mm, Y:75mm, --Minimum Step 0.1um --Re-Position Accurate +/-1.5um --Max Speed 25mm/s --Size: 275x239x44.5mm --Soft Stop, Mechanical Stop, Opto-Electro Switch Stop --Z Axis Re-Position Accurate: Average +/-1.5um, Near Focus +/-0.1um --Z Axis Max Speed 10r/s --3D Control Stick, 4 Speeds --Connection By USB2.0 & RS232 --Communication Speed 9600 bits	○	○	●	A54.1095-A
Z Axis Upgrade With Optical Grating Ruler	○	○	○	A54.1095-B	
Condenser	Swing-Out Condenser NA0.9/0.25	●			A56.1091-S
	Auto Swing-Out Condenser NA0.9/0.25		●	-	A56.1091-A
Focusing	Coaxial Coarse & Fine Focusing, Fine Division 0.001mm, Focusing Range 35mm, Coarse Stroke 37.7mm, Fine Stroke 0.1mm, Can Exchange Hand Wheel Between Left/Right	●	●	●	

Light Source	Transmit Kohler Illumination, Brightness Adjustable, 12V100W Halogen, External Lamp House For A12.1091-H, A12.1093-H	●	●		A56.1090-12V100W
	Transmit Kohler Illumination, Brightness Adjustable, 3W S-LED, Built-in Main Body For A12.1091-L, A12.1093-L			●	A56.1090-3WLED
	ECO Function Support Auto Power Off After 30 Mins From Operator Leave To Save Energy	●	●	●	A56.1090-ECO
	Auto Brightness Adjust, Brightness For Each Objective Can Be Memorized And Restored When Objective Is Selected (To Upgrade A12.1091 to Auto Brightness Adjust, Must Upgrade Its Nosepiece To A54.1091-6C Coded Nosepiece At Same Time)	○	●	●	A56.1090-AB
Filter For Transmit Light	Filter Holder On Base, Can Hold 3 Filters	●	●	●	A56.1092-H
	Filter LBD	●	●	●	A56.1092-LBD
	Filter Green	●	●	●	A56.1092-G
	Filter Yellow	●	●	●	A56.1092-Y
	Filter ND6	●	●	●	A56.1092-ND6
	Filter ND25	●	●	●	A56.1092-ND25
Adapter	Eyepiece Adapter Dia.23.2mm	○	○	○	A55.1090-E
	C-Mount 1.0x	○	○	○	A55.1090-1.0x
	C-Mount 0.5x	○	○	○	A55.1090-0.5x
Software	NOMIS Basic Image Processing Software	○	○	○	A30.1090
Dark Field	Dark Field Condenser, N.A. 0.7~0.9, Dry	○	○	○	A5D.1090-D
	Dark Field Condenser, N.A. 1.25~1.36, Immersion	○	○	○	A5D.1090-I
	Dark Field Objective, Infinity Plan 100X, For Immersion Dark Field Observation	○	○	○	A5D.1030-3
	Dark Field Objective, Infinity Plan 100X, With Iris Diaphragm, For Immersion Dark Field Observation	○	○	○	A5D.1030-4
Polarizing	Polarizer For Transmit Light Source, Swing-Out, On Collector	○	○	○	A5P.1091-BP
	Analyzer For Transmit Light, Slide With Quartz Wedge Compensator	○	○	○	A5P.1091-BA
	Upgrade To A15.1091 Professional Polarizing Microscope	○		○	A15.1091
Phase Contrast	Turret Phase Contrast Condenser, Center Adjustable	○	○	○	A5C.1090
	Centering Telescope 10x	○	○	○	A5C.1092
	Infinity Plan Phase Contrast Objective N-PLN PH 10x/0.25	○	○	○	A5C.1091-10
	Infinity Plan Phase Contrast Objective N-PLN PH 20x/0.40	○	○	○	A5C.1091-20
	Infinity Plan Phase Contrast Objective N-PLN PH 40x/0.65	○	○	○	A5C.1091-40
	Infinity Plan Phase Contrast Objective N-PLN PH 100x/1.25(Oil)	○	○	○	A5C.1091-100
DIC	Polarizer For Transmit Light Source	○	○	○	A5P.1090-TP
	Turret DIC Condenser	○	○	○	A5C.1095
	DIC Slide 10x, Used With Semi-APO Fluorescent Objective	○	○	○	A5C.1095-10
	DIC Slide 20x/40x, Used With Semi-APO Fluorescent Objective	○	○	○	A5C.1095-2040
	DIC Slide 100x, Used With Semi-APO Fluorescent Objective	○	○	○	A5C.1095-100
	DIC Slide With Analyzer 10x-20x	○	○	○	A5C.1095-1020P
	DIC Slide With Analyzer 40x-100x	○	○	○	A5C.1095-40100P
NIS60 N-PLFN Semi-	4x/0.13, W.D.16.5, Cover Glass 0.17mm	○	○	○	A5F.1091-4
	10x/0.3, W.D.8.1, Cover Glass 0.17mm	○	○	○	A5F.1091-10

APO Fluoresce nt Objective For DIC	20x/0.5, W.D.2.1, Cover Glass 0.17mm	○	○	○	A5F.1091-20
	40x/0.75, W.D.0.7, Cover Glass 0.17mm	○	○	○	A5F.1091-40
	100x/1.3, W.D.0.15, Cover Glass 0.17mm, Oil	○	○	○	A5F.1091-100
Fluoresce nt	Upgrade To A16.1093, A16.1095 Fluorescent Microscope	-	○	○	A16.1093, A16.1095
Other Accessori es	Working Stage Holder Bracket	●	●	●	A54.1096
	Adapter To Adjust Eye Position	○	○	○	A54.1096-A1
	Adapter To Lower The Stage Position 1"	○	○	○	A54.1096-A2
	Immersion Oil	●	●	●	A50.1090-01
	Allen Wrench	●	●	●	A50.1090-02
	Power Cord	●	●	●	A50.1090-03
	Short Eye Cover, For Eyepiece	○	○	○	A50.1090-04
	Long Eye Cover, For Eyepiece	○	○	○	A50.1090-05
	Eyepiece Micrometer, Cross	○	○	○	A50.1090-06
	Adapter Ring To Install Eyepiece Micrometer	○	○	○	A50.1090-07
USB Cable	○	○	○	A50.1090-08	
Note: "●" In Table Is Standard Outfits, "○" Is Optional Accessories "-" Is Unavailable					



Opto-Edu (Beijing) Co., Ltd.

☎ 0086 13911110627

✉ sale@optoedu.com

🌐 cnoec.com

F-1501 Wanda Plaza, No. 18 Shijingshan Road, Beijing 100043, China