



## CNOEC OPTO-EDU A59.4231 38M Usb Microscope Camera

Our Product Introduction

### Basic Information

- Place of Origin: China
- Brand Name: CNOEC, OPTO-EDU
- Certification: CE, Rohs
- Model Number: A59.4231
- Minimum Order Quantity: 1 pc
- Price: FOB \$1~1000, Depend on Order Quantity
- Packaging Details: Carton Packing, For Export Transportation
- Delivery Time: 5~20 Days
- Payment Terms: T/T, West Union, Paypal
- Supply Ability: 5000 pcs/ Month



### Product Specification

- Sensor: Panasonic CMOS 21M, 1/2.3"
- Pixel Size: 1.335 $\mu$ m X 1.335 $\mu$ m
- Output: HD(Type A), USB(Type B), TF Card
- Photo Resolution: 38M
- HD Support: 4:3, 16:9, 16:10
- TF Card: TF Card
- White Balance: Auto/Manual, RGB Adjustable Separately
- Cross Line: 8 Lines, Color, Width, Position Adjustable; 2 Lines With Scale
- Menu: Sharpness, Contrast, Saturation Adjustable
- Digital Zoom Support: With Remote Control Photo, Video
- Highlight: **opto edu usb microscope camera, usb microscope camera opto edu, CNOEC hdmi microscope camera**



### More Images



for more products please visit us on [cnoec.com](http://cnoec.com)

## Product Description

60M 1/2.3" CMOS Panasonic Sensor, Pixel Size 1.335x1.335 $\mu$ m

HDMI+USB Output At Same Time, TF Card 16G

HDMI Photo Resolution 60M, Video Resolution 2K@30fps

USB2.0 Output Driver Free With Measuring Function Software

Cross Line 2 Lines With Scale, Sharpness, Contrast, Saturation Adjustable.



Our Product Introduction

for more products please visit us on [cnoec.com](http://cnoec.com)

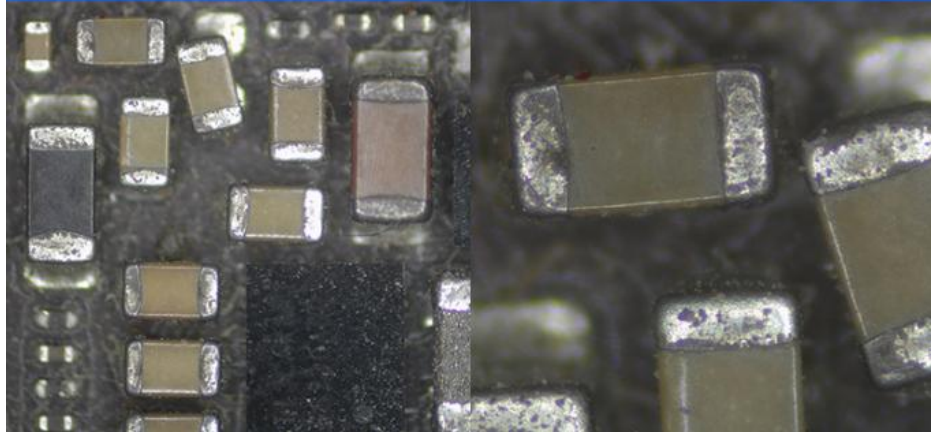


**2K HDMI + USB Output At Same Time**





2K HDMI + USB Output At Same Time



Support Remote Controller





Black Color Optional

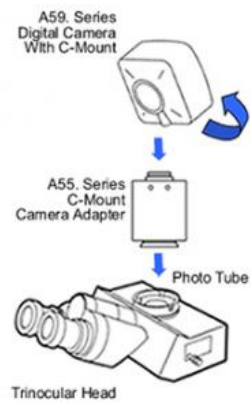




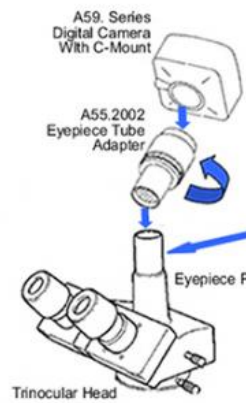
**OPTO-EDU**

**How Camera Connect To Microscope**

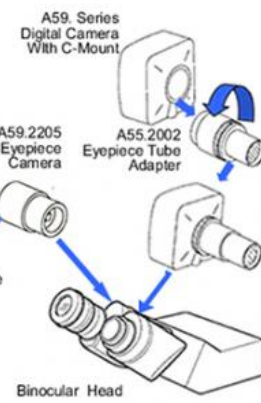
1. To Trinocular Microscope On Straight Photo Tube



2. To Trinocular Microscope On Eyepiece Photo Tube

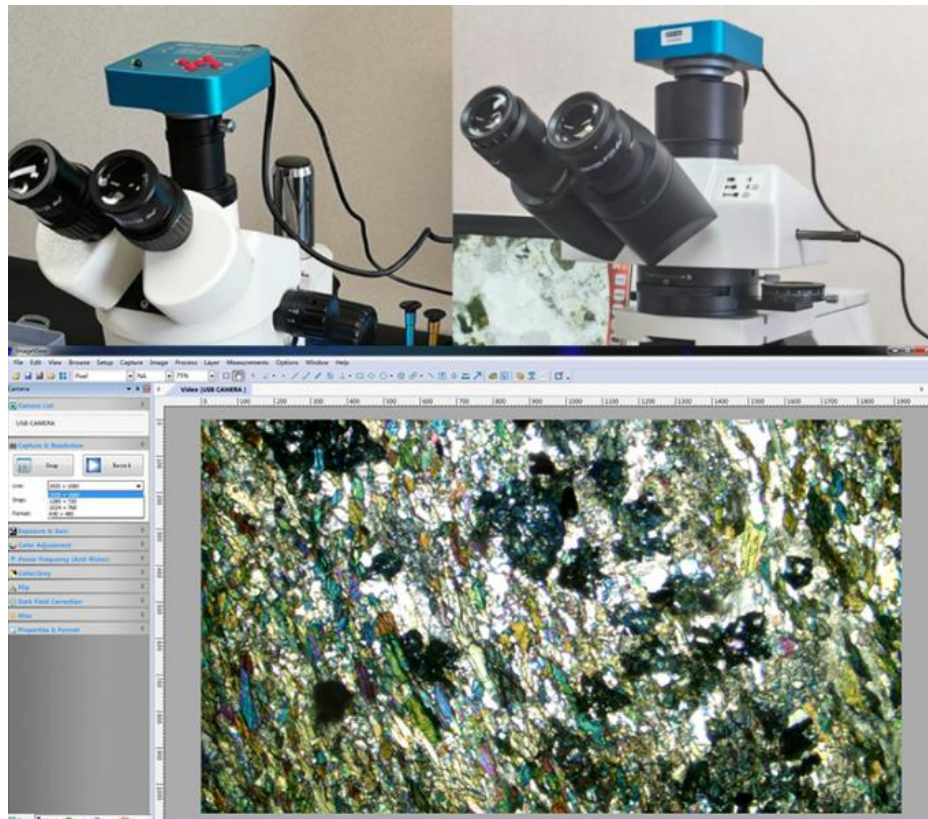


3. To Binocular Microscope On Eyepiece Tube



The software can realize preview, save, export, Measurement Function and other functions.



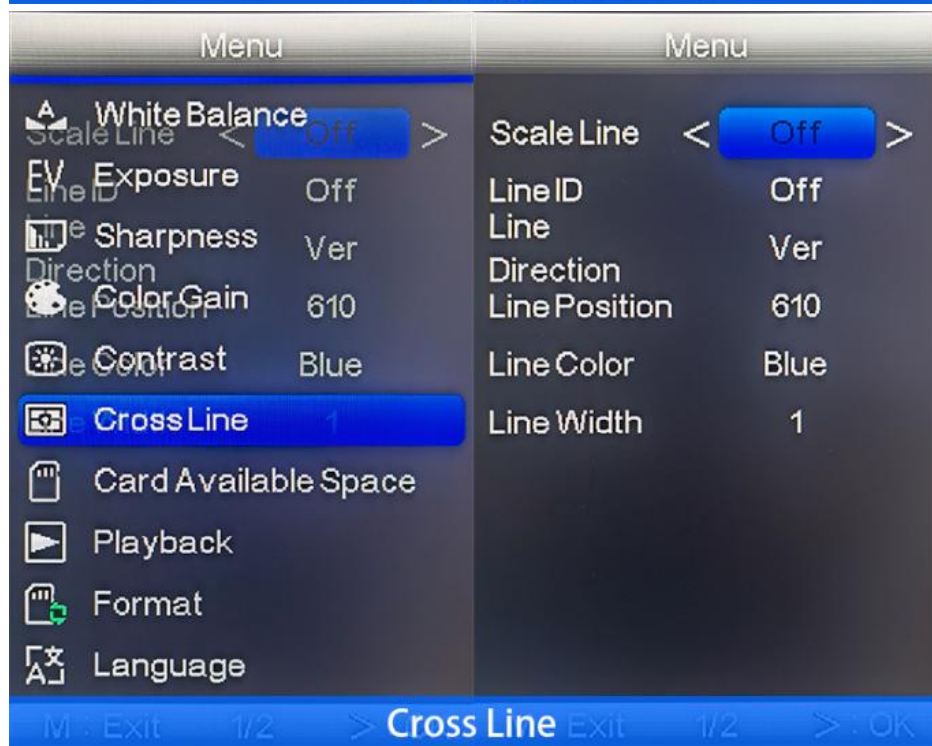
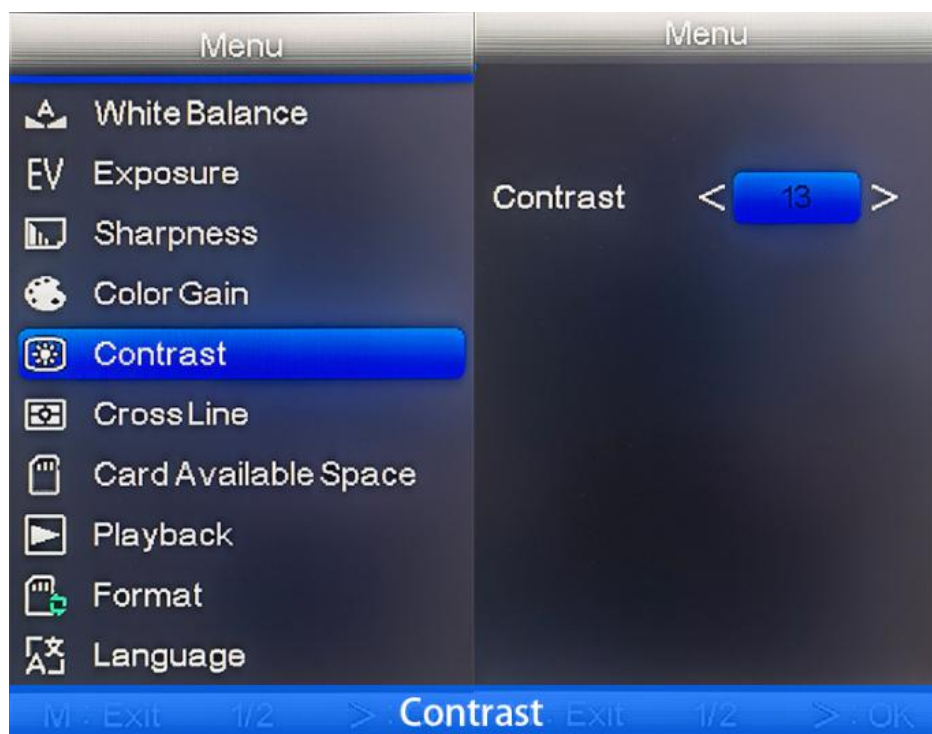


The software can realize preview, save, export, Measurement Function and other functions.





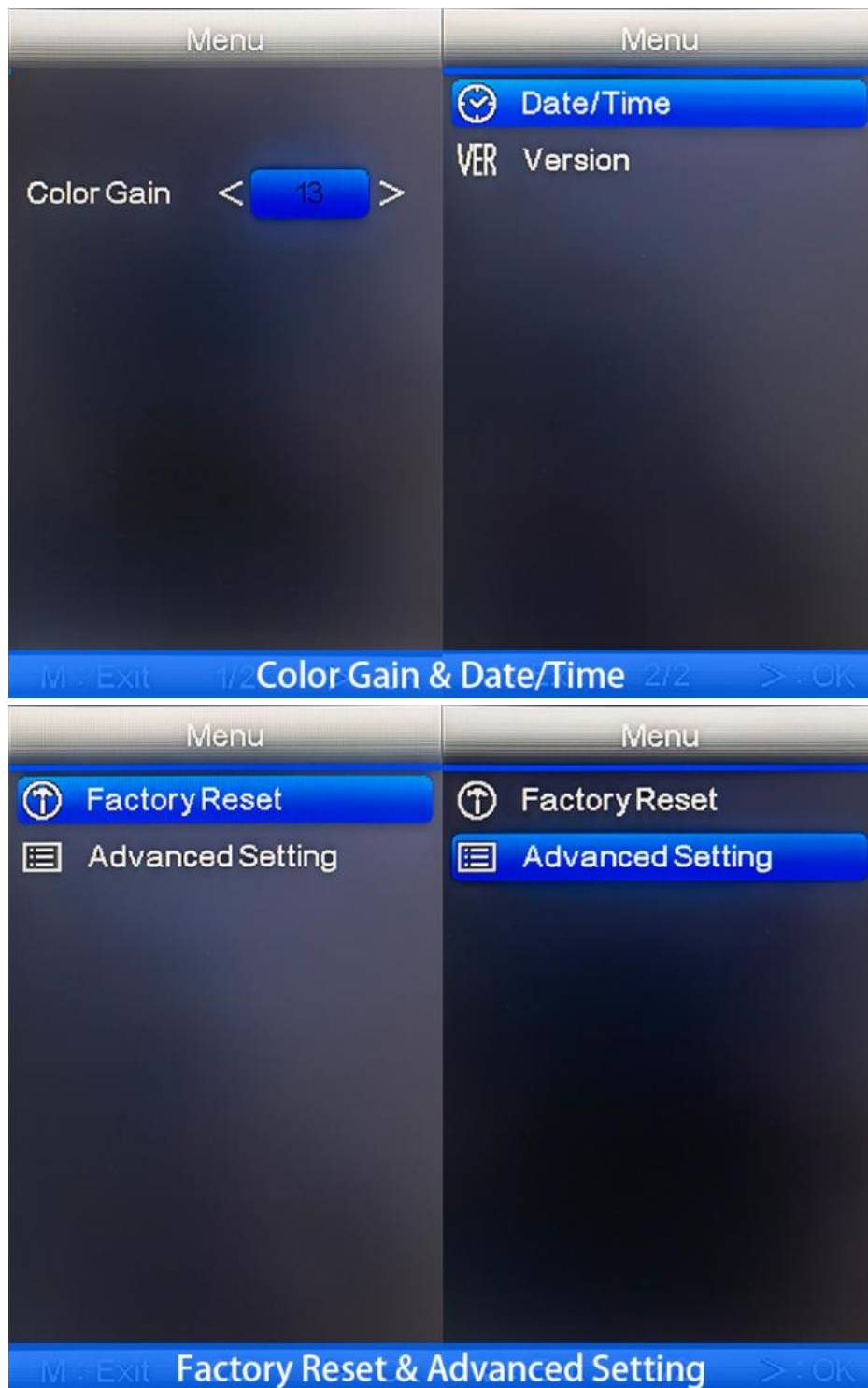


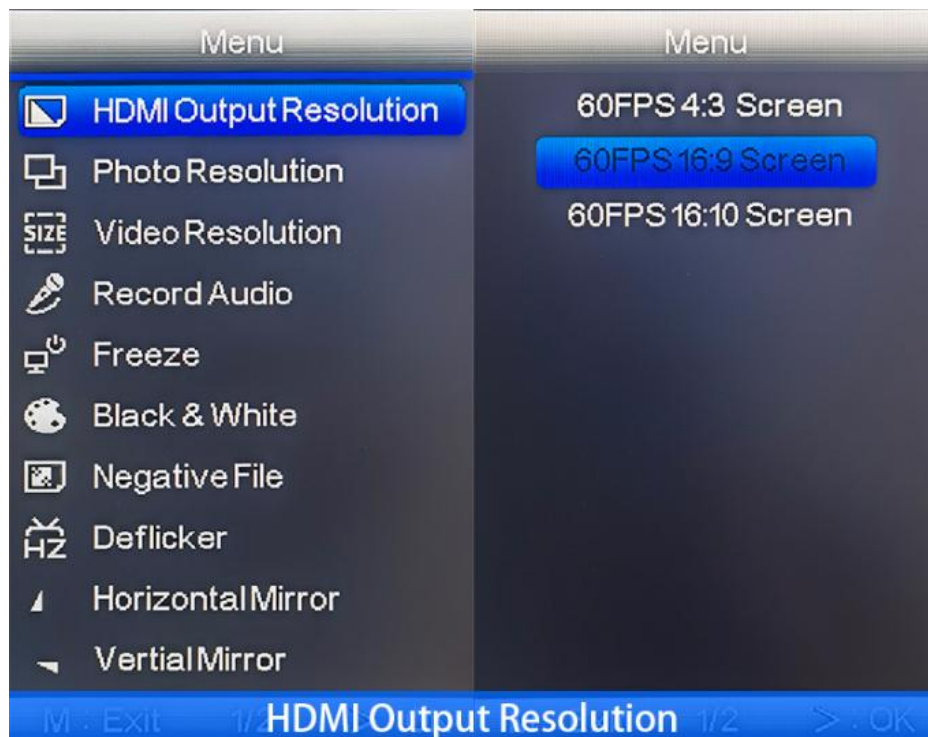












A59.4231 2K HDMI Digital Camera, 60M	
Sensor	1/2.3" Panasonic CMOS
Pixel Size	1.335µm × 1.335µm
Output	HDMI(Type A), USB(Type B), TF Card Output To USB + HDMI At Same Time
HDMI Photo Resolution	60MP (4:3), Default 38MP (4:3), Capture To TF Card
HDMI Video Resolution	2K@30FPS, 1080p@60FPS, Capture To TF Card
HDMI Control	Quick Control Buttons On Camera & IR Remote Controller HDMI Interface Menu Support English/Chinese
HDMI Photo Scale	Support 4:3, 16:9
USB Output	1920*1080@30FPS 2.0M 1280*720@30FPS, 1024*768@30FPS 640*480@30FPS (Driver Free)
TF Card	16G TF Card Included, Support Max 64GB
Exposure	Auto/Manual Adjustable
White Balance	Auto/Manual Adjustable
Color	RGB Adjustable Separtely
Cross Line	8 Lines, Color, Width, Position Adjustable; 2 Lines With Scale 2 Lines With Dot, Color, Width, Position Adjustable;
Menu	Sharpness, Contrast, Saturation Adjustable
Mono Negative	Support
Mirror Image	Support Horizontal & Vertical Mirror
Language	Chinese/English
Digital Zoom	Support
IR Remote Controller	Remote Control To Take Photo, Video, Set Menu
Input	DC 12V (Support 5-19V), 55-21mm Socket
Power Consumption	Max 0.15W (12V,0.12A)
Adapter	C/CS Mount
Product Size	74*74*35mm
Product Weight	150g
Package Size	160*100*80mm
Package Weight	450g
Packaging list	Camera/Adapter/Remoter/USB Cable/HDMI Cable/ 16G TF Card/Instruction Manual




**Opto-Edu (Beijing) Co., Ltd.**

---

 0086 13911110627

 [sale@optoedu.com](mailto:sale@optoedu.com)

 [cnoec.com](http://cnoec.com)

F-1501 Wanda Plaza, No. 18 Shijingshan Road, Beijing 100043, China