



OPTO EDU A13.1096 Inverted Metallurgical Microscope Research Level

Our Product Introduction

for more products please visit us on cnoec.com

Basic Information

- Place of Origin: China
- Brand Name: CNOEC, OPTO-EDU
- Certification: CE, Rohs
- Model Number: A13.1096
- Minimum Order Quantity: 1 pc
- Price: Negotiation
- Packaging Details: Carton Packing, For Export Transportation
- Delivery Time: 5~20 Days
- Payment Terms: T/T, West Union, Paypal
- Supply Ability: 5000 pcs/ Month



Product Specification

- Observation Method: Bright Field
- Head: Seidentopf Trinocular Head, Inclined 45°, Interpupillary Distance 47-78mm
- Eyepiece: SW10x/22mm, High Eyepoint, Diopter Adjustable, Dia.30mm
- Media Lens: Built-in Media Lens Turret, Under Nosepiece, 1.0x, 1.5x Switchable
- Nosepiece: Manual Sextuple Nosepiece, With DIC Slot
- Objective: "NIS45 N-MPFN Infinity Plan BF/DF Semi-APO/APO Metallurgical Objective"
- Working Stage: Three Layer Mechanical Stage, Size 340x230mm
- Focusing: Coaxial Coarse & Fine Focusing, Focusing Range 9mm
- Highlight: **opto edu inverted metallurgical microscope, trinocular metallurgical opto edu microscope, trinocular inverted metallurgical microscope**



More Images





OPTO-EDU (BEIJING) CO., LTD.

F-1501 Wanda Plaza, No.18 Shijingshan Road, Beijing 100043, China
Tel:+8610 88696020 Fax:+8610 88696085

A13.1096

Inverted Metallurgical Microscope, Semi-APO,
BF/DF/PL/FL/DIC



A13.1096, A14.1096, A16.1096 Series



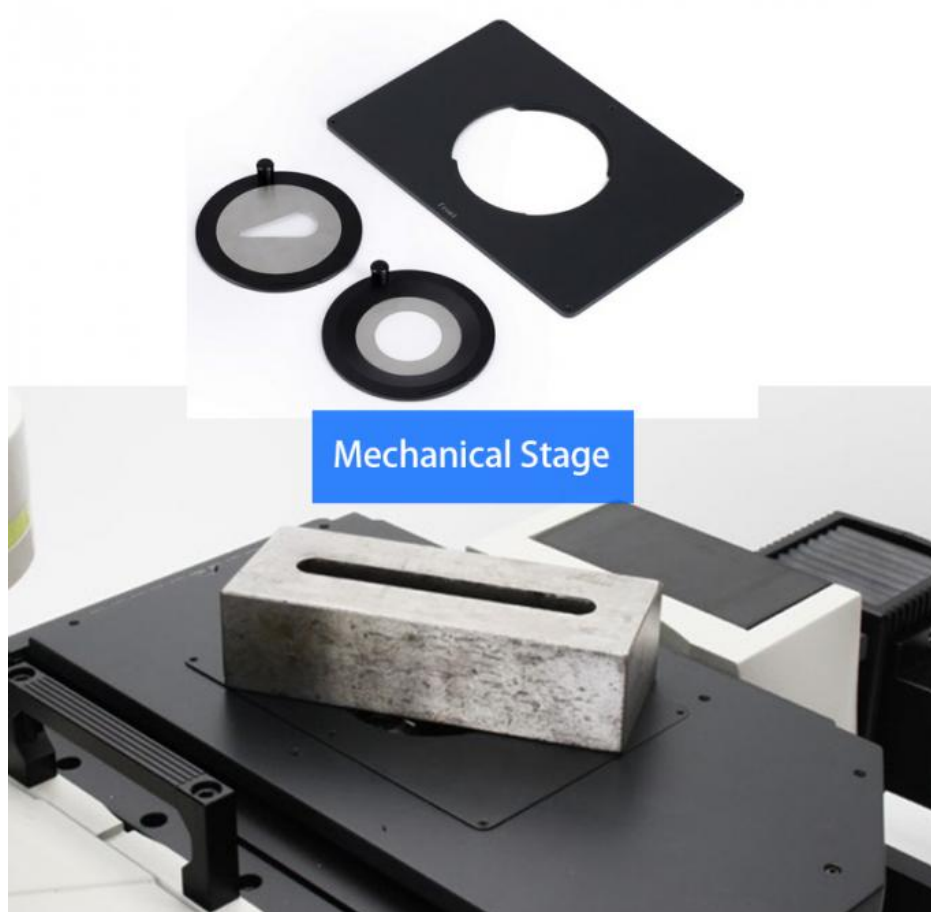
A13.1096
Inverted Metallurgical Microscope, Semi-APO,
BF/DF/PL/FL/DIC



A14.1096, A14.1097
Inverted Biological
Microscope, Semi-APO,
BF/PL/DIC



A16.1096, A16.1097
Inverted Fluorescent
Microscope, Semi-APO,
BF/PL/FL/DIC

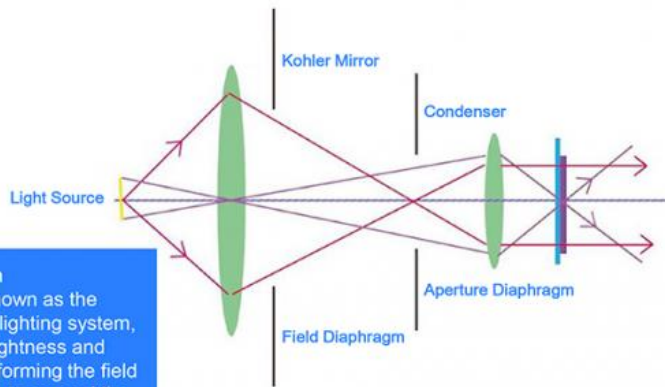




A13.1096 Infinity Plan S-APO/APO BF/DF Metallurgical Objectives

Through the use of carefully selected high-transmittance glass and advanced coating technology, accurate color reproduction is ensured. At the same time, for various detection needs, there are a variety of objective lenses to choose from, including high-resolution, polarized light and ultra-long working distance objectives.





Kohler Illumination
 Kohler Lighting is known as the perfect microscopic lighting system, providing perfect brightness and uniformity. While uniforming the field of view, it is possible to expand the functions of the microscope.

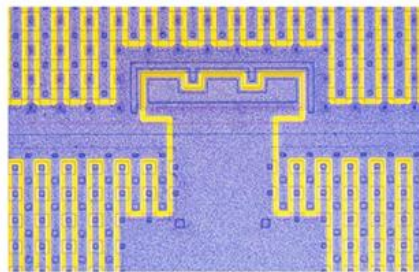


Six-station Observation Module Turntable

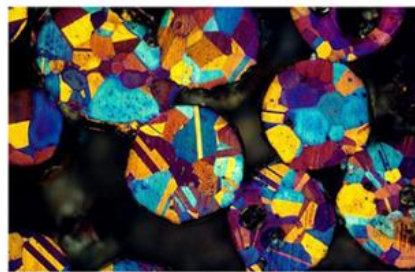


Various Slider to Obtain Clear Images
 The field of view adjustment diaphragm and the aperture adjustment diaphragm can be used to adjust the size of the field of view and the sharpness of imaging, as well as adjust the aberration to a certain extent. The filter diaphragm can easily adjust the brightness or color of the light. The analyzer slider can adjust the imaging during polarized observation and DIC. Multiple sliders are used in combination to ensure high-quality microscopic imaging.

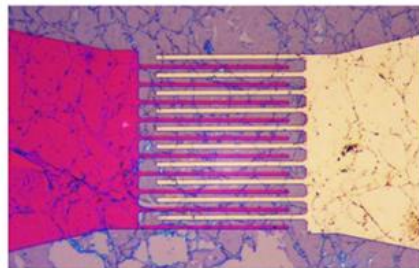
With the continuous deepening of material science research, a single observation mode can no longer meet the increasingly complex scientific research and inspection needs. A13.1090 can achieve a variety of observation needs, whether basic bright field, polarized light, or complex DIC and silver observation. , Can get clear, true and complete images



Electronic Chip, Reflect, Bright Field



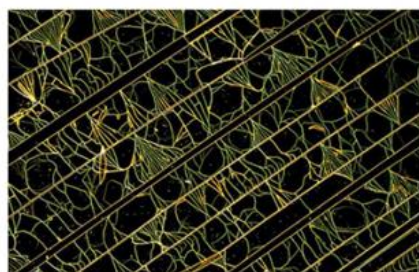
Bronze Powder, Reflect, Polarizing



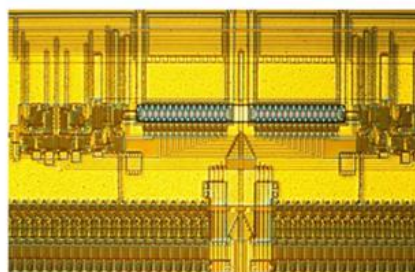
Electrode, Reflect, Bright Field



High Chromium Nickel Alloy, Reflect, Polarizing



Embossing Of Silicon Nitride, Reflect, Dark Field



Integrated Circuit, Reflect, DIC

	A13.1090 Research Level Inverted Fluorescent Microscope	A13.1090	Cata.No.
Optical System	NIS60 Infinite Optical System	●	
Observation Method	Bright Field	●	
	Dark Field	○	
	Polarizing	○	
	Flourescent	○	
	DIC	○	
Head	Seidentopf Trinocular Head, Inclined 45°, Interpupillary Distance 47-78mm, Lighth Split Switch E100:P0/E20:P80/E0:P100, With Built-in Bertrand Lens Which Can Be Used As Centering Telescope	●	
Eyepiece	SW10x/25mm, High Eyepoint, Diopter Adjustable, Dia.30mm	○	A51.1090-1025
	SW10x/22mm, High Eyepoint, Diopter Adjustable, Dia.30mm	●	A51.1090-1022
	EW12.5x/17.5mm, High Eyepoint, Diopter Adjustable, Dia.30mm	○	A51.1090-12516
	WF15x/16mm, High Eyepoint, Diopter Adjustable, Dia.30mm	○	A51.1090-1516
	WF20x/12mm, High Eyepoint, Diopter Adjustable, Dia.30mm	○	A51.1090-2012
Media Lens	Built-in Media Lens Turret, Under Nosepiece, 1.0x, 1.5x Switchable	●	
Nosepiece	Manual Sextuple Nosepiece, With DIC Slot	●	
NIS45 N-MPFN Infinity Plan BF/DF Semi-APO/APO Metallurgical Objective	5x/0.15, W.D.20mm, No Cover Glass, Semi-APO	●	A5M.1091-5
	10x/0.3, W.D.11mm, No Cover Glass, Semi-APO	●	A5M.1091-10
	20x/0.45, W.D.3mm, No Cover Glass, Semi-APO	●	A5M.1091-20
	50x/0.8, W.D.1mm, No Cover Glass, APO	●	A5M.1092-50
	100x/0.9, W.D.1mm, No Cover Glass, APO	●	A5M.1092-100
Working Stage	Three Layer Mechanical Stage, Size 340x230mm, Moving Range 130x85mm, Flexible Knob, Available For Different Size Small Stage Plate, Can Hold Max Weight 30Kgs	●	A54.1098
	Motorized X/Y Axes (Optical Grating Type) Mechanical Stage, Size 325x144mm, Moving Range 130x100mm, Max Speed 10mm/s, Resloution 0.1um, Repeat Accuracy +/-0.5um, Available For Different Size Small Stage Mounted on Top Layer, With Separate Communication/Main Control Box & Stick	○	A54.1098-M
	Metal Plate Dia.20mm	●	A54.1098-M20
	Metal Plate Dia.28mm	●	A54.1098-M28
	Metal Plate Water Drop Shape	●	A54.1098-MW
Focusing	Coaxial Coarse & Fine Focusing, Focusing Range 9mm (Up 2mm, Down 7mm), Coarse Stroke 2mm, Fine Stroke 0.2mm	●	
	Motorized Z Axes (Optical Grating Type) Focusing System, Focusing Range 9mm (Up 7mm, Down 2mm), Focusing Resloution 0.02um With Optical Grating, Movement Repeat Positioning Accuracy +/-0.1um, Prevent Stage Fall Down Function	○	

Adapter	3 Camera Ports, On Both Side Of Main Body And Head, Turret Switch Between: --Trinocular Port Switch E100:P0/E20:P80/E0:P100 --Left Port C-Mount 1.0x E0:P100 --Right Port C-Mount 1.0x E20:P80	●	
	C-Mount 0.4x	○	A55.1095-04
	C-Mount 0.5x	○	A55.1095-05
	C-Mount 1.0x	●	A55.1095-10
Multi Function Turret	Multi Function Turret Under Nosepiece, With 6 Positions For Cubes Of Bright Field, Dark Field, Phase Contrast, Polarizing, Fluorescent View, Turning The Disc To Easily Switch Observation Methods	●	
Dark Field	Dark Field Block, Put In Multi Function Turret, For Reflect Light Source	○	A5D.1098
Polarizing	Polarizer Light Block, Put In Multi Function Turret	○	A5P.1098-PL
	Circularly Polarized Light Block, Put In Multi Function Turret	○	A5P.1098-CP
	Analyzer Slide, Insert Into Slot On Nosepiece, 360° Rotatable	○	A5P.1098-A
DIC	DIC Slider 5x-20x, Insert Into Slot On Nosepiece	○	A5C.1097-S520
	DIC Slider 50x-100x, Insert Into Slot On Nosepiece	○	A5C.1097-S50100
Reflect Light Source	12V100W Halogen Kohler Illumination, Brightness Adjustable	●	A56.1095-12V100W
	Large Filter Holder Slide With 3 Holes	●	A56.1095-LS
	Field Diaphragm Slide, Center Adjustable,	●	A56.1095-FS
	Small Empty Slide	●	A56.1095-ES
	Aperture Diaphragm Slide	●	A56.1095-AS
	ND6 Filter	●	A56.1095-ND6
	ND25 Filter	●	A56.1095-ND25
Reflect Fluorescent Light Source	100W Mercury HBO Fluorescent Light House, Intelligent Power Supply Box Protect Barrier For UV Light	○	A5F.1095-100W
	10W S-LED Fluorescent Light, 4 Color Bands, Brightness Adjustable By Control Box	○	A5F.1095-10WLED
	Fluorescent Filter B Block, Put In Multi Function Turret	○	A5F.1095-B
	Fluorescent Filter G Block, Put In Multi Function Turret	○	A5F.1095-G
	Fluorescent Filter U Block, Put In Multi Function Turret	○	A5F.1095-U
	Fluorescent Filter V Block, Put In Multi Function Turret	○	A5F.1095-V
Software	NOMIS Basic Image Processing Software	○	A30.1090

Note: "●" In Table Is Standard Outfits, "○" Is Optional Accessories "-" Is Unavailable

Software Function



1" 6.0M CCD



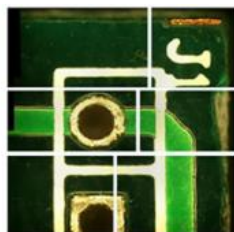
1" 6.0M CCD



3/4" 16M CMOS

◆ Image processing system

- The software has various functions to meet your different image processing and analysis needs.
- A variety of cameras to choose from, providing high quality microscopic shooting programs.
- Universal USB3.0 interface, which can provide high speed image transmission.



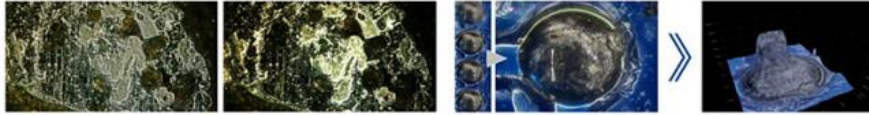
◆ Image stitching

Imaging software for high-quality image acquisition, processing and analysis. By collecting images in real time or importing images, small images can be spliced quickly to form a large-size, high-resolution image.

◆ Real-time / static measurement

Typical observation and quality control require interactive measurement functions such as distance, angle, rectangle, circle and ellipse.





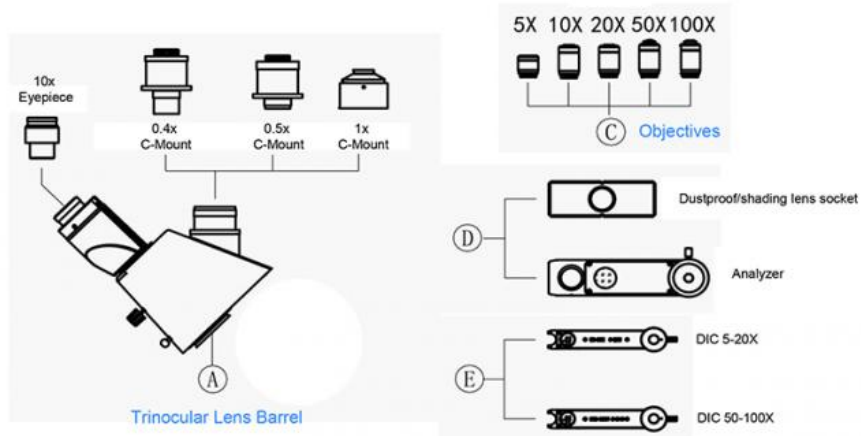
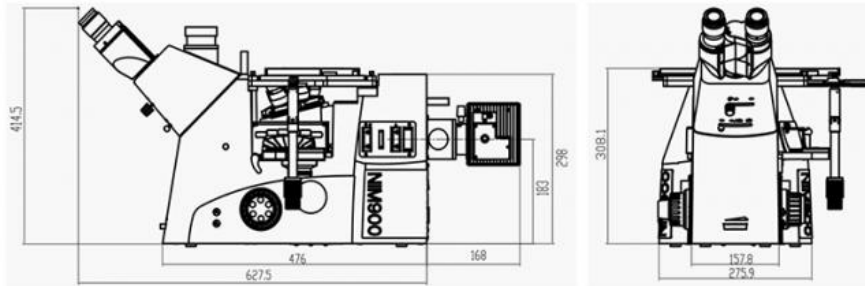
◆ **High-definition real-time HDR image/video**
 When observing different samples, the surface of the sample will show areas of high contrast. HDR allows users to complete the generation of perfect exposure images between clicks

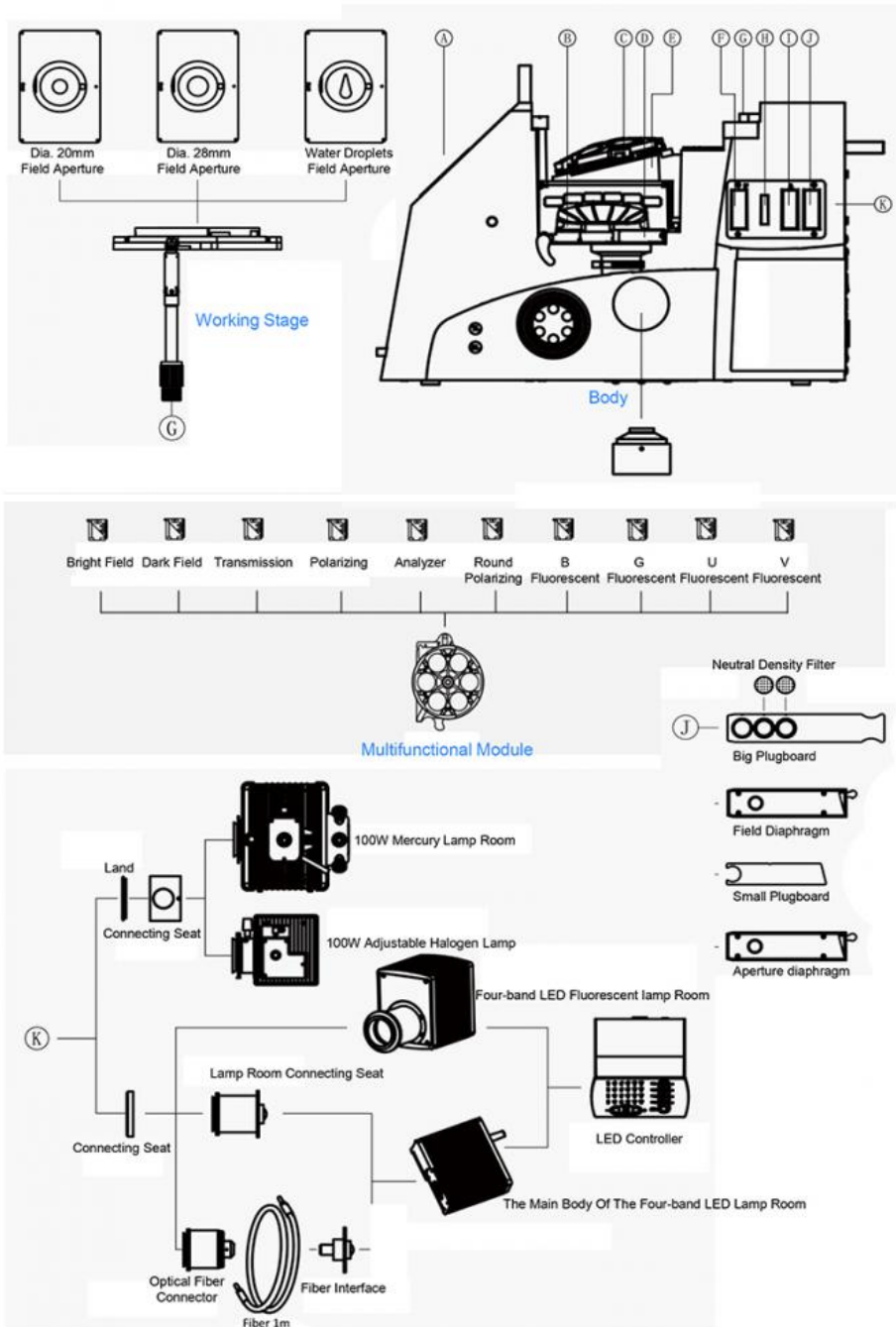
◆ **Depth of Field Fusion/3D Reconstruction**
 Provides depth fusion and 3D reconstruction functions

Product Multi-angle



System Diagram & Size(mm)





Opto-Edu (Beijing) Co., Ltd.

☎ 0086 13911110627

✉ sale@optoedu.com

🌐 cnoec.com

F-1501 Wanda Plaza, No. 18 Shijingshan Road, Beijing 100043, China