



12.5" LCD HDMI USB Digital Microscope 6x - 39.4x 2.0M Real Time Auto

Our Product Introduction

for more products please visit us on cnoec.com

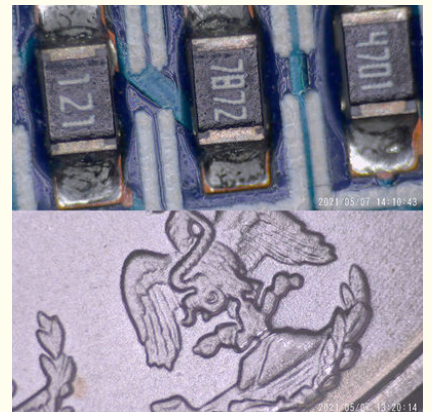
Basic Information

- Place of Origin: China
- Brand Name: CNOEC, OPTO-EDU
- Certification: CE, Rohs
- Model Number: A36.4971
- Minimum Order Quantity: 1 pc
- Price: FOB \$1~1000, Depend on Order Quantity
- Packaging Details: Carton Packing, For Export Transportation
- Delivery Time: 5~20 Days
- Payment Terms: T/T, West Union, Paypal
- Supply Ability: 5000 pcs/ Month

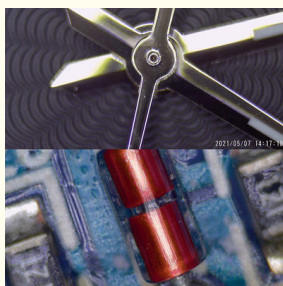


Product Specification

- Manification: 6.0x-39.4x, On 12.5" LCD Monitor
- Resolution: 2.0M
- Sensor: SONY CMOS IMX291
- Max Pixels: 1920x1080 (2,073,600 Pixels)
- Sensor Size: 1/2.8" (6.058mm(H) X 4.415mm(V))
- Pixel Size: 2.9µm X 2.9µm
- Dynamic Range: 128dB
- SNR: 30dB
- Spectral Response: 380~650nm
- Exposure: Real-time Auto, Single Auto, Manual Adjustment
- Highlight: **lcd hdmi digital microscope,
12.5 usb digital microscope,
6x usb digital microscope**



More Images



Product Description

Features

A34.4970, A36.4970, A36.4971 Series HDMI+USB LCD Digital Microscope, is newly developed in 2021 for industry inspection, mobile repair and etc. work.

A34.4970

- Professional Multi-Function Image Processing Software Support Measure Function On Computer
- Unique Design Back Focus Knob On Camera Extends Working Distance To 44 ~ 230mm.
- 360° Universal Hinge Bracket Design Supports Arbitrary Hovering, Flexible To View Any Angle
- Comprehensive Magnification 5.3x~ 39.4x (Based on Actual Measurement On 12.5" LCD Display)
- Dual LED Ring Light With Independent Control Switch Both Brightness Adjustable
- One Power Cord For All Microscope & LCD Makes Desk Clean And Clear.
- Full Metal High Quality Body With Light Weight & Compact Size To Save Desk Space
- Control Panel & Remote Control Support Photo, Record, Digital Zoom In/Out, Menu Setting

A36.4970

- 12.5 " Full HD 1080P Display LCD Screen, Plug & Play Design Show Live Image Automatically.
- Professional Multi-Function Image Processing Software Support Measure Function On Computer
- Unique Design Back Focus Knob On Camera Extends Working Distance To 44 ~ 230mm.
- 360° Universal Hinge Bracket Design Supports Arbitrary Hovering, Flexible To View Any Angle
- Comprehensive Magnification 3.6x~ 39.4x (Based on Actual Measurement On 12.5" LCD Display)
- Dual LED Ring Light With Independent Control Switch Both Brightness Adjustable
- One Power Cord For All Microscope & LCD Makes Desk Clean And Clear.
- Full Metal High Quality Body With Light Weight & Compact Size To Save Desk Space
- Control Panel & Remote Control Support Photo, Record, Digital Zoom In/Out, Menu Setting

A36.4971

- 12.5 " Full HD 1080P Display LCD Screen, Plug & Play Design Show Live Image Automatically.
- Professional Multi-Function Image Processing Software Support Measure Function On Computer
- Unique Design Back Focus Knob On Camera Extends Working Distance To 44 ~ 230mm.
- Stainless Pole Stand With Metal Holder, Assure Vertical 180° And Move Up/Down Easily
- Comprehensive Magnification 6.0x~ 39.4x (Based on Actual Measurement On 12.5" LCD Display)
- Dual LED Ring Light With Independent Control Switch Both Brightness Adjustable
- One Power Cord For All Microscope & LCD Makes Desk Clean And Clear.
- Full Metal High Quality Body With Light Weight & Compact Size To Save Desk Space
- Control Panel & Remote Control Support Photo, Record, Digital Zoom In/Out, Menu Setting



A36.4971

12.5" LCD HDMI+USB Digital Microscope, 6x-39.4x, 2.0M



Product Details





Software Installation And Application

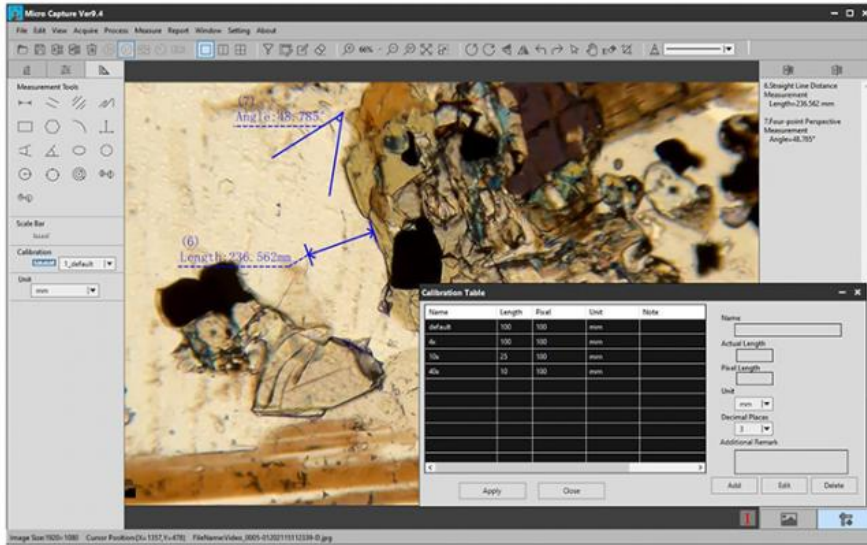
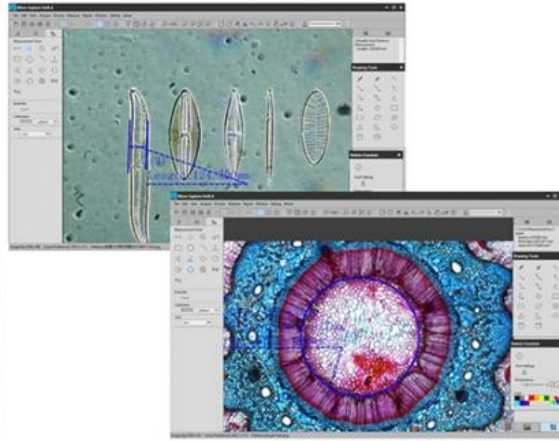
◆ Installation Steps

The installation process consists of four main steps:

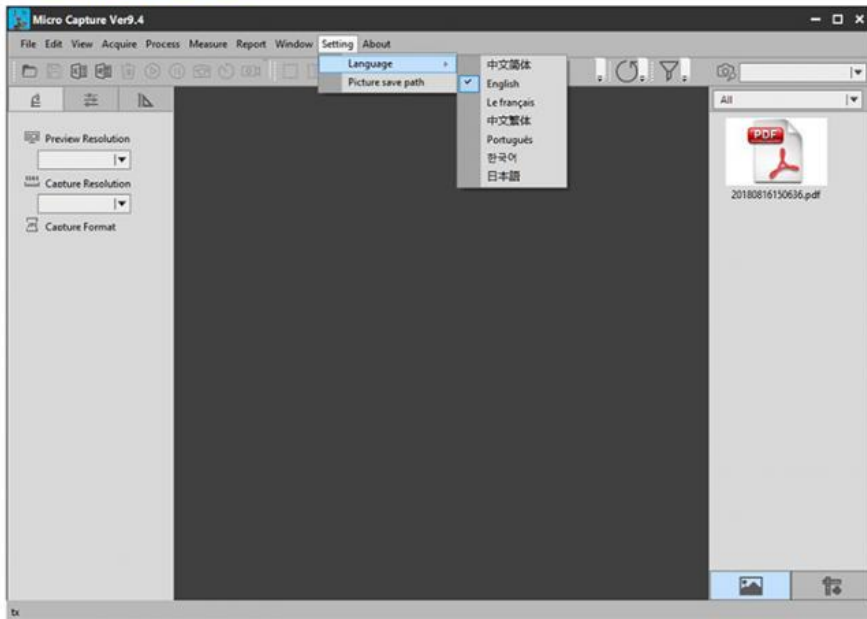
- Welcome to the Micro Capture Setup Wizard:** The first window displays the product icon and text: "Welcome to the Micro Capture Setup Wizard. This will install Micro Capture version 9.4 on your computer. It is recommended that you close all other applications before continuing. Click Next to continue, or Cancel to exit Setup." Buttons for "Next >" and "Cancel" are at the bottom.
- Select Destination Location:** The second window asks "Where should Micro Capture be installed?". It shows the default path "C:\Program Files (x86)\Micro Capture" in a text box with a "Browse..." button. A note at the bottom states "At least 219.6 MB of free disk space is required." Buttons for "< Back", "Next >", and "Cancel" are at the bottom.
- Select Start Menu Folder:** The third window asks "Where should Setup place the program's shortcuts?". It shows the default path "Micro Capture" in a text box with a "Browse..." button. Buttons for "< Back", "Next >", and "Cancel" are at the bottom.
- Installing:** The final window shows a progress bar and the text "Extracting files... C:\Program Files (x86)\Micro Capture\hwDecodeSDK.dll". A "Cancel" button is at the bottom.



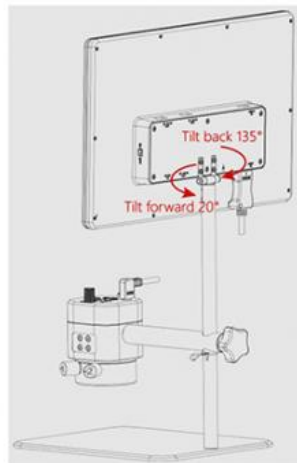
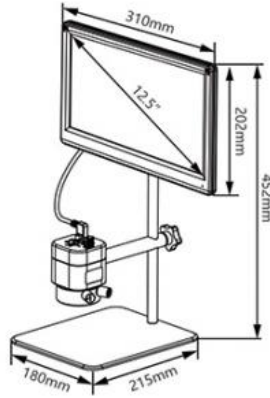
◆ Measurement Calibration



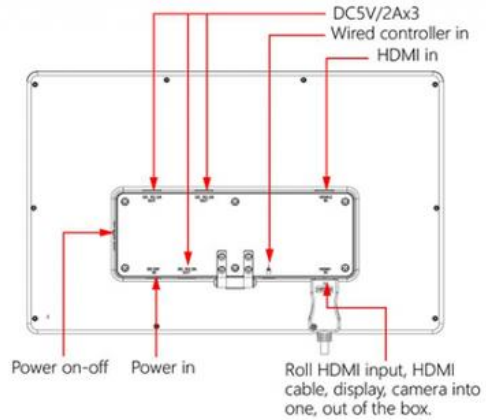
◆ Language Selection



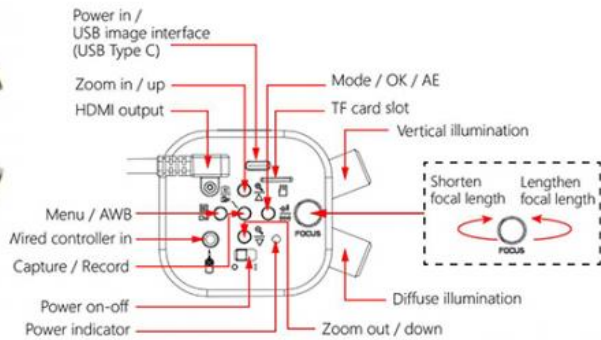
Product Size & Conformation



◆ Screen Interface



◆ Camera Button



Product Specification



Features	A34.4970, A36.4970, A36.4971 Series HDMI+USB LCD Digital Microscope , is newly developed in 2021 for industry inspection, mobile repair and etc. work.			
	A34.4970			
	--Professional Multi-Function Image Processing Software Support Measure Function On Computer --Unique Design Back Focus Knob On Camera Extends Working Distance To 44 ~ 230mm. --360° Universal Hinge Bracket Design Supports Arbitrary Hovering, Flexible To View Any Angle --Comprehensive Magnification 5.3x~ 39.4x (Based on Actual Measurement On 12.5" LCD Display) --Dual LED Ring Light With Independent Control Switch Both Brightness Adjustable --One Power Cord For All Microscope & LCD Makes Desk Clean And Clear. --Full Metal High Quality Body With Light Weight & Compact Size To Save Desk Space --Control Panel & Remote Control Support Photo, Record, Digital Zoom In/Out, Menu Setting			
	A36.4970			
--12.5 " Full HD 1080P Display LCD Screen, Plug & Play Design Show Live Image Automatically. --Professional Multi-Function Image Processing Software Support Measure Function On Computer --Unique Design Back Focus Knob On Camera Extends Working Distance To 44 ~ 230mm. --360° Universal Hinge Bracket Design Supports Arbitrary Hovering, Flexible To View Any Angle --Comprehensive Magnification 3.6x~ 39.4x (Based on Actual Measurement On 12.5" LCD Display) --Dual LED Ring Light With Independent Control Switch Both Brightness Adjustable --One Power Cord For All Microscope & LCD Makes Desk Clean And Clear. --Full Metal High Quality Body With Light Weight & Compact Size To Save Desk Space --Control Panel & Remote Control Support Photo, Record, Digital Zoom In/Out, Menu Setting				
A36.4971				
--12.5 " Full HD 1080P Display LCD Screen, Plug & Play Design Show Live Image Automatically. --Professional Multi-Function Image Processing Software Support Measure Function On Computer --Unique Design Back Focus Knob On Camera Extends Working Distance To 44 ~ 230mm. --Stainless Pole Stand With Metal Holder, Assure Vertical 180° And Move Up/Down Easily --Comprehensive Magnification 6.0x~ 39.4x (Based on Actual Measurement On 12.5" LCD Display) --Dual LED Ring Light With Independent Control Switch Both Brightness Adjustable --One Power Cord For All Microscope & LCD Makes Desk Clean And Clear. --Full Metal High Quality Body With Light Weight & Compact Size To Save Desk Space --Control Panel & Remote Control Support Photo, Record, Digital Zoom In/Out, Menu Setting				
A34.4970, A36.4970 HDMI +USB LCD Digital Microscope				
		A34.4970	A36.4970	A36.4971
Data Output	5G WIFI Output	-	-	-
	HDMI Output	●	●	●
	USB Output	●	●	●
Magnification	5.3x-39.4x, On 12.5" LCD Monitor	●		
	3.6x-39.4x, On 12.5" LCD Monitor		●	
	6.0x-39.4x, On 12.5" LCD Monitor			●
Resolution	2.0M	●	●	●
Sensor	SONY CMOS IMX291	●	●	●
Max Pixels	1920x1080 (2,073,600 Pixels)	●	●	●
Sensor Size	1/2.8" (6.058mm(H) x 4.415mm(V))	●	●	●
Pixel Size	2.9µm x 2.9µm	●	●	●
Dynamic Range	128dB	●	●	●
SNR	30dB	●	●	●
Spectral Response	380~650nm	●	●	●
Exposure	Real-time Auto, Single Auto, Manual Adjustment	●	●	●
White Balance	Real-time Automatic, Single Automatic, Manual R/G/B Adjustment	●	●	●
HDM Port	Output Image Max 1920x1080P, 60fps, Auto-adaptive Display	●	●	●
USB Type C Port	Support 2 Modes: Power In, Or USB Image Output To Computer	●	●	●
Storage	TF Card, Max Support 128G	●	●	●
Remote Control	Support Photo, Record, Digital Zoom In/Out, Menu Setting	○	○	○
Record Format	Photo 1920x1080 Format JPG	●	●	●
	Video: 1920X1080P, 60fps1920X1080P30,1280x720P120,1280x720P60 Format MOV			
Power By	DC 5V 900mA, By USB Port	●		
	DC 12V 3A, By Adapter Connected To LCD Screen		●	●
Working Distance	44mm~230mm	●	●	●
Depth of View	0.8mm~6.5mm	●	●	●
Field of View	7mmx4mm (At The Highest Magnification 39.4x) to 45.7mmx25.8mm (At The Lowest Magnification 6x)	●	●	●
Focus	Extra Back Focus Knob, Focus To Clear Image Quickly And Easily In Large Range, Extend Working Distance To 44mm~230mm			
Light Source	Dual LED Ring Light Built-in, Vertical Illumination And Diffuse Illumination Independent Switch, Both Brightness Adjustable			

LCD Screen	Size: 12.5" Full HD 1080p Display Type: a-Si TFT-LCD/IPS/Fog Screen Number of Pixels: 1920x1080 Display Color: 16.7M Panel Brightness: 300 nits Contrast: 800:1 Viewing Angle: Horizontal/Vertical 170° Adjustable	-	•	•
Stand	360° Universal Hinge Bracket Design, Supports Arbitrary Hovering, Flexible And Easy To View Object From Any Angle	•	•	
	Stainless Pole Stand With Metal Holder, Assure Vertical 180° And Move Up/Down Easily			•
	Metal Plate Size 180x215mm, Large Size For Mobile Repair Work	•	•	•

Note: "•" In Table Is Standard Outfits, "◻" Is Optional Accessories "-" Is Unavailable



Opto-Edu New Arrival 2021!

[A34.4970](#), [A36.4970](#), [A36.4971](#) Series All-in-One Designed Digital HDMI+USB LCD Microscope!

- 12.5" Full HD 1080P Display LCD Screen, Plug & Play Design Show Live Image Automatically.
- Professional Multi-Function Image Processing Software With Measure Function On Computer
- Unique Design Back Focus Knob On Camera Extends Working Distance To 44~230mm
- Stainless Pole Stand With Metal Holder, Assure Vertical 180° And Move Up/Down Easily
- Real Magnification 3.6x~ 39.4x (Based on Actual Measurement On 12.5" LCD Display)

These newly designed digital microscope come with BACK FOCUS knob, which can focus quickly and enlarged working distance up to 44-230mm, combined DUAL LED RING LIGHT, to supply oblique & coaxial light for different observation requirements.



A34.4970

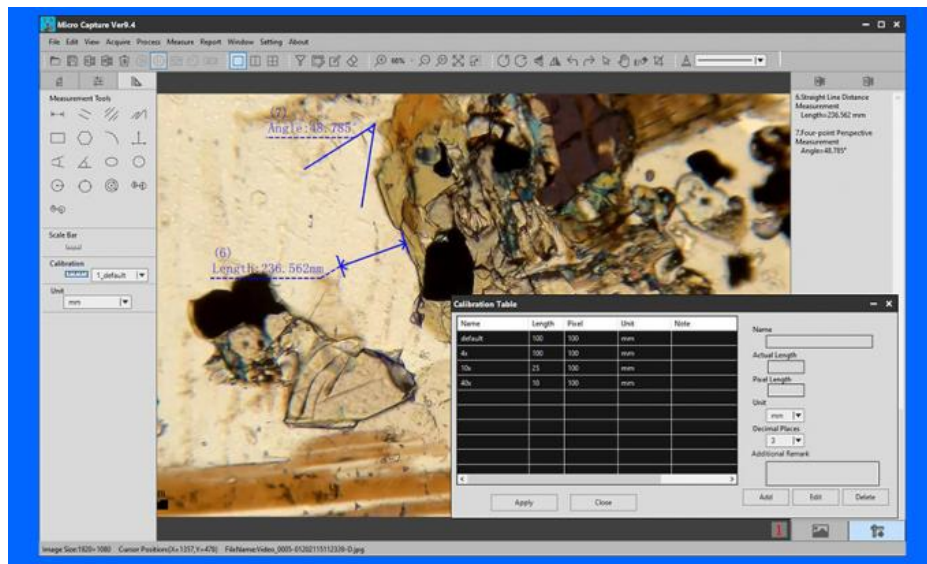
HDMI+USB

Digital Microscope


5.3x-39.4x, 2.0M

6x-39.4x, 2.0M, 1/2.8" CMOS, TF Card, HDMI Output, USB Output With Measuring Software, W.D.44-230mm, Depth of View 0.8-6.5mm, View Field 7x4mm-45.7x25.8mm, Universal Hinge Stand With Plate 180x215mm, Dual LED Ring Light, Support Remote Control


[A34.4970](#) camera is compact size mini microscope, with HDMI + USB port, can show image directly on your monitor which has HDMI port; or export the image to USB port of computer, to work with professional software for measuring, image stitching, depth of field combine function.



[A36.4970](#) & [A36.4971](#) combined high quality 12.5" LCD screen, all-in-one design makes it more convenient for your work. Just plug the power, the image will show on screen directly, no need to adjust too much.



A36.4970
12.5" LCD
HDMI+USB
Digital Microscope
3.6x-39.4x, 2.0M



A36.4971
12.5" LCD
HDMI+USB
Digital Microscope
6x-39.4x, 2.0M

[A36.4970](#) with universal angle adjustable joint holder to move camera easily, can view the object from any angle as you like. [A36.4971](#) use the stainless steel pole and camera holder to assure the light path strictly along with vertical line, is more suitable for production line to inspect some components in large number quickly, but no need to view multi-angles. This series digital camera has very high quality 2.0M CMOS sensor and high speed 30fps image transport, can show the image in real color by switching between Halogen/LED modes, and Biological/Stereo modes.



2.0M Camera
 2.0M, 1/2.8" CMOS, TF Card, HDMI Output, USB Output
 With Measuring Software

Light Source
 Dual LED Ring Light Built-in, Vertical Illumination And
 Diffuse Illumination Independent Switch, Both Brightness
 Adjustable

It also support remote wire control to make sure camera keep still when taking a picture or video. There is TF card slot on the camera, support up to 32G TF card to store the captured image & video.

CHECK THE VIDEO TO SEE HOW A34.4970 WORKS!

Have a look on the work video, and contact us now for more information!



Opto-Edu (Beijing) Co.,Ltd.

F-1501 Wanda Plaza, No.18 Shijingshan Road, Beijing 100043, China
 Official Main Website: www.optoeduc.com
www.cnoec.com.cn, www.optoedumicroscope.com, www.microscopemadeinchina.com
 Wechat, Skype: xincnoec Mobile WhatsApp: +86 13911110627
 Tel: +86 10 88696020 Email: sale@cnoec.com





Opto-Edu (Beijing) Co., Ltd.

☎ 0086 13911110627 ✉ sale@optoedu.com 🌐 cnoec.com

F-1501 Wanda Plaza, No. 18 Shijingshan Road, Beijing 100043, China