



## SONY USB3.0 CMOS Digital Camera Microscope 2560 \* 1920 A59.2212

Our Product Introduction

for more products please visit us on [cnoec.com](http://cnoec.com)

### Basic Information

- Place of Origin: China
- Brand Name: CNOEC, OPTO-EDU
- Certification: CE, Rohs
- Model Number: A59.2212
- Minimum Order Quantity: 1 pc
- Price: FOB \$1~1000, Depend on Order Quantity
- Packaging Details: Carton Packing, For Export Transportation
- Delivery Time: 5~20 Days
- Payment Terms: T/T, West Union, Paypal
- Supply Ability: 5000 pcs/ Month



### Product Specification

- Applications: Microscope
- Certification: CE
- Output: USB3.0
- Product Name: Microscope Accessories
- Resolution: 2560\*1920
- Sensor: CMOS
- Highlight: microscope accessory, parts of the microscope



### More Images



## Product Description

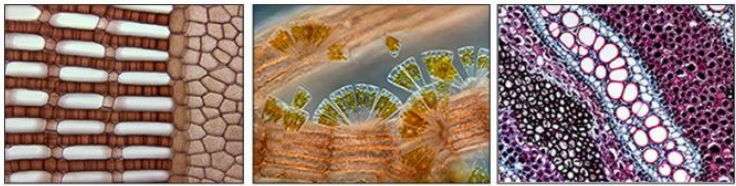
### Description:

- Color Aptina **CCD** Sensor
- USB3.0** C-Mount CMOS Camera
- Square Housing:68 X 68 X 45mm
- Support Microsoft Windows XP / Vista / 7 / 8 (32 & 64 bit)
- Support OS X (MAC OS X) and Linux
- Support Native C/C++, C#, Directshow, Twain, Labview
- With Standard C-mount, Eyepiece Tube, And Ring Dia.30mm, Dia.30.5mmview

### Specifications:

Pixel	C300K	C1.45M	C5.0M	C5.2M
<b>Senser Size</b>	1/3.0" CCD	2/3" CCD	2/3" CCD	2/3" CCD
Image Pickup Device	SONY ICX618ALA <b>CCD(Mono)</b>	SONY ICX285AQ <b>CCD(Color)</b>	SONY ICX282AQ <b>CCD(Color)</b>	SONY ICX655AQ <b>CCD(Color)</b>
Scan Mode	Progressive		Interlaced	Progressive
Imaging Area	3.6mm(H)* 2.7mm(V)	10.0mm(H) x 9.3mm(V)	9.74mm(H) x 7.96mm(V)	9.93mm(H) x 8.70mm(V)
Output	<b>USB3.0</b>			
Max.Resolution	640*480	1360*1024	2560*1920	
Pixel Size	5.6x 5.6µm	6.45 x 6.45µm	3.4µm x 3.4µm	3.45µm x 3.45µm
G Sensitivity	1200mV with 1/30s Accumulation	1240mV with 1/30s Accumulation	260mV with 1/30s Accumulation	420mV with 1/30s Accumulation
Dynamic Range	70dB			
A/D Converter	12-bit Parallel, 8-Bit R.G.B to PC			
SN Ratio	62dB			
Binning	1*1		1*1, 2*2	1 x 1
Exposure	0.06ms~40s ROI Auto & Manual	0.12ms~240s, ROI Auto & Manual	0.20ms~105ms, ROI Auto & Manual	0.22ms~60s, ROI Auto & Manual
Peak Quantum Efficiency	65%		35%	60%
Readout Noise	4.5 e (r.m.s) @ gain high /5.6 e (r.m.s) @ gain low	N/A	N/A	N/A
Extinction Ratio	1 : 2000 @1ms exposure time	N/A	N/A	N/A
Smear	-110dB	N/A	N/A	N/A
<b>General Specification</b>				
Spectral Range	380-650nm (with IR-Filter)			
White balance	ROI White Balance/ Manual Temp-Tint Adjustment			
Color Rendering Technique	Ultra Fine Color Engine			
Video Format & Frame Rate	N/A			
Capture/Control API	Native C/C++, C#, Directshow, Twain, Labview			
Recording System	Still Picture and Movie			
Cooling System	Natural			
<b>Operating Environment</b>				
Temperature	Operating Temp.: -10~50°C Storage Temperature-20°C~ 60°C			
Humidity	Operating Humidity:30%~80%RH Storage Humidity:10~60%RH			
Power Supply	DC 5V from PC USB port			
<b>Software Environment</b>				
Operating System	Microsoft Windows XP / Vista / 7 (32 & 64 bit) OS X (Mac OS X), Linux			
PC Requirements	CPU: Equal to Intel Core2 2.8GHz or Higher Memory: 2GB or More USB port: USB2.0 High-speed Port Display: 17" or Larger CD-ROM			





A59.2212 CCD USB3.0 Digital Camera,  
C Mount + Eyepiece Type

- Packing List**
- One Digital Camera with Standard C-Mount
  - One Eyepiece Tube, Dia.23.2mm, Built-in 0.5x Lens
  - Two Ring Adaptors, Dia.30mm, Dia.30.5mm
  - One 6' (1.8m) USB2.0 High-Speed Cable
  - One CD with Software and User's Instructions



**Opto-Edu (Beijing) Co., Ltd.**

☎ 0086 13911110627      ✉ sale@optoedu.com      🌐 cnoec.com

F-1501 Wanda Plaza, No. 18 Shijingshan Road, Beijing 100043, China