



WF10X University Student 9.7" Biological Compound Microscope 40x - 1000x A33.0209 + A59.3503

Our Product Introduction

for more products please visit us on cnoec.com

Basic Information

- Place of Origin: China
- Brand Name: CNOEC, OPTO-EDU
- Certification: CE, Rohs
- Model Number: A33.0209 + A59.3503
- Minimum Order Quantity: 1 pc
- Price: FOB \$1~1000, Depend on Order Quantity
- Packaging Details: Carton Packing, For Export Transportation
- Delivery Time: 5~20 Days
- Payment Terms: T/T, West Union, Paypal
- Supply Ability: 5000 pcs/ Month

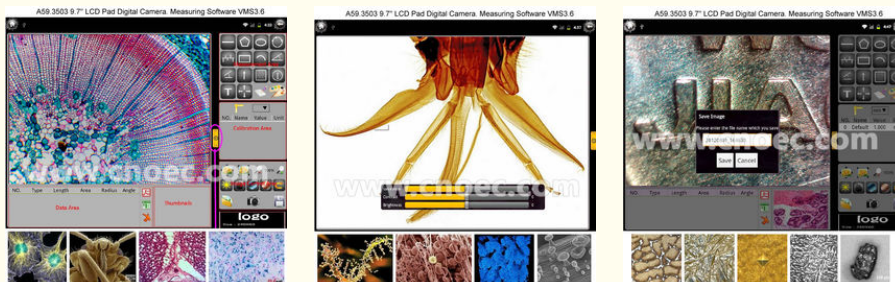


Product Specification

- LCD Screen: 9.7"
- Magnification: WF10X
- Certification: CE, Rohs
- Drawtube: Binocular
- Illumination: Halogen Lamp, LED
- Theory: Digital LCD Microscope
- Highlight: **usb digital microscope, infinity plan microscope**



More Images



Product Description

Binocular Biological Compound Microscope 40x - 1000x A33.0209 + A59.3503

Description:

9.7" LCD Pad Digital Biological Microscope

Newly Designed with 9.7" LCD This microscope is the conveniently operated optical instruments with excellent functions and new pattern it is very suitable for usage in medical test, teaching and microobservation in hospitals and schools.

--9.7" LCD Pad Display with 2nd Generation HD Screen 1024*768.

--5.0M Digital Camera, max 2592*1936 pixels

--Wifi Supported, Wireless Lan 802.11 b/g

--With high quality achromatic objectives

--Coaxial coarse/fine focusing system with tension adjustable and up stop

--6V 20W halogen lamp with brightness control

Specifications:

Specification	A33.0209 9.7" LCD Pad Digital Biological Microscope
Eyepiece	WF10X(Φ18mm)
Objective	Achromatic 4X/0.10
	Achromatic 10X/0.25
	Achromatic 40X/0.65(Spring)
	Achromatic 100X/1.25(Spring, oil)
Head	Compensation binocular head inclination 30°;
Focus System	Coaxial coarse/fine focus system, Minimum division of fine focusing: 2um With tensional adjustable and up stop, Base bearing black plastic cap
Nosepiece	Quadruple backward ball bearing inner locating
Stage	Double layer mechanical, size 135x125mm, moving range 75x35mm
Condenser	Abbe N.A.1.25 Rack & pinion adjustment
Filter	Blue filter
	Frosted filter
Collector	For halogen lamp
Light source	6V 20W halogen lamp with brightness control

A59.3503 9.7" LCD Pad Digital Camera	
9.7" LCD Pad Digital Camera	1/2.5 " CMOS Sensor
	5.0 M Pixels, Full Resolution 2592*1936
	Image-previewing Rate:30fps at Full Resolution
	Video Format:720P/30FPS
	White Balance Setting:Manual / Automatic / Preinstall Operation
	Programmable Controls:Gain, Frame Rate, Frame Size, Exposure
	Pixel Size:2.2um x 2.2um
	ADC:12bit
	Dynamic Range:71dB
	SNRMAX:40.5dB
	Shutter Type:Global Reset Release (GRR)
Color Filter Array:RGB Bayer Pattern	
Connection: C-mount Interface	
Display	G-sensor, Multi-point Capacitance Touch Screen
	9.7" 2nd Generation HD LED Backlit LCD Screen (1024*768)
Operating System	Android 2.3
CPU	1.2GHz (ARM Cortex-A8 Core)
RAM	1GB (DDR 3)
Storage Device	Onboard Flash 8GB, Optional:16GB
	ESupport External TF Card, Maximum Capacity of 32GB
Application Software	Task Manager, Browser, Calculator, Calendar, Email, ES File Explorer, Gallery, Photo/Video, Music, Search, Setting, Sound Recorder, E-book, MSN/Skype Chatting, Game Playing etc.
Buttons	Top Button: Turn on/off, Volume+, Volume -, Reset
	Front Main Button: Return, Home, Menu, Search
Battery	3.7V 6400mAh Rechargeable Li-Polymer Battery
	Endurance in Tablet Mode: 10hours
Wi-Fi	Support wireless data network, wireless lan 802.11b/g
Bluetooth	V2.1 + EDR
3G Net Work	3G Module is Optional Accessories, External 3G Card Slot , Support WCDMA / EVDO / TDSCDMA
Interface	1* Mini USB2.0, 1*HDMI, 1* Micro-SD Card Slot (Up to 32GB), 1* 3.5mm Standard Stereo Earphone Slot,1* SIM Card Slot
Sensor Function	Onboard G-sensor, Support X/Y/Z 3axis Gravity Sensor
	Onboard Electronic Compass
Audio	2* Built-in Class-D Digital Power Amplifier Loudspeaker, Built-in Microphone
Media File Formats	Video Supported: MPEG-2 Main-High, H.264 BP/MP/HP, VC1 SP/MP/AP, RV10 8/9/10, MPEG-4/Xvid SP/ASP, DivX 3/4/5/6, H.263 P0/P3, MJPEG Encode:H.264 BP, H.263 P0/P3, MPEG-4 SP, MPEG-2 Main-Main, MJPEG, 3D Video Primary Formats
	Audio Support: MP3, ACC, ADTS, M4A, WMA
	Photo Support: JPG, GIF, BMP, PNG
Language	Multi Languages:English, Czech, Dansk, German, Spanish, Russian, French, Italian, Dutch, Norwegian, Polski, Portugues, Greek, Portuguese, Svenska, Turkey, Korean, Japanese, Simplified Chinese, Traditional Chinese etc.
Power Switching Adaptor	External Power Adaptor, Input:AC 110V~220V, Output:DC5V 2500mA. Optional Plug Types:USA , EU, UK and Japan etc.
Accessories	Power Adapter, USB Cable, User Manual
Ambient Condition	Temperature:-30°C to +70°C
Software	Profressional Measurement Software(VMS3.6)
Click to See More Details of A59.3503 9.7" LCD Pad Digital Camera	



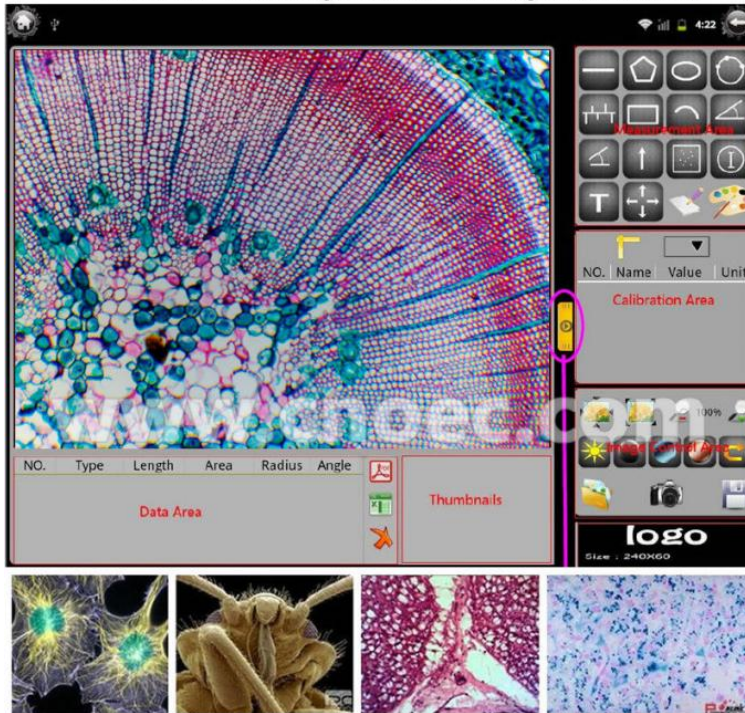
www.cnoec.com

A59.3503 9.7" LCD Pad Digital Camera. Measuring Software VMS3.6

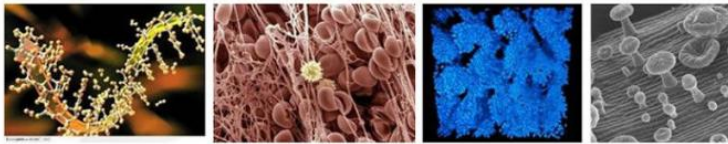


www.cnoec.com

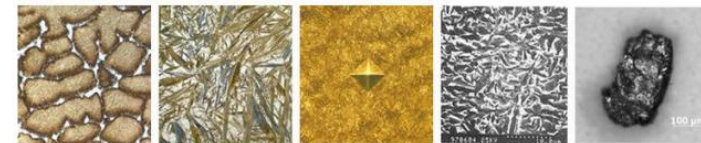
A59.3503 9.7" LCD Pad Digital Camera. Measuring Software VMS3.6



A59.3503 9.7" LCD Pad Digital Camera. Measuring Software VMS3.6



A59.3503 9.7" LCD Pad Digital Camera. Measuring Software VMS3.6



Opto-Edu (Beijing) Co., Ltd.

☎ 0086 13911110627 ✉ sale@optoedu.com 🌐 cnoec.com

F-1501 Wanda Plaza, No. 18 Shijingshan Road, Beijing 100043, China