



Opto Edu M13.5850 Motorized Microscope Metallurgical 3d Usb3.0 Cmos Digital Bd Pi Xyz

Our Product Introduction

Basic Information

- Place of Origin: China
- Brand Name: CNOEC, OPTO-EDU
- Certification: CE, Rohs
- Model Number: M13.5850
- Minimum Order Quantity: 1 pc
- Price: FOB \$1~1000, Depend on Order Quantity
- Packaging Details: Carton Packing, For Export Transportation
- Delivery Time: 5~20 Days
- Payment Terms: T/T, West Union, Paypal
- Supply Ability: 5000 pcs/ Month



Product Specification

- XY Moving: 110x110mm
- Z Moving: 20mm
- Resolution: <math><0.05\mu\text{m}</math>
- Max. Speed: 50mm/s
- Repeatability: $\leq 20\mu\text{m}$
- Digital Camera: USB3.0 CMOS Cooling Digital Camera
- Name: Opto Edu Motorized Microscope Metallurgical 3d Usb3.0 Cmos Digital Bd Pi Xyz
- Keyword: Motorized Microscope
- Highlight: **opto edu motorized microscope, metallurgical motorized microscope, usb3.0 motorized microscope**

for more products please visit us on cnoec.com

Product Description

Motorized Metallurgical Microscope, BD+PL, XYZ Motorized

Infinity Plan Semi-APO BD DIC5x10x20x50x100x Objectives With 6 Holes Motor Nosepiece

XYZ Motorized Stage Large Moving Range 100x100mm Resolution 0.05um

Full Auto 2D Scan Image Stitching With Quick & Precise Mode

Upgradeable to 2D Pro & 3D Version Software Enable 3D Image Stitching & Measuring

USB3.0 20M Cooling Fluorescent Digital Camera With Computer Pre Installed Software

M13.5850 3D Full Auto Super Depth of Field Upright Metallurgical Microscope		Cata. No.
Optical System	BF/DF, Bright Field/Dark Field, Transmit & Reflect Light	●
	PL, Polarizing	●
	DIC, Different Interference Contrast	○
Head	30° Inclined Erect Image Infinity Gemel Trinocular Head, Interpupillary Distance 50~76mm, Light Splitting Ratio Switch E100:P0/E0:P100,	● A53.0913 -T30E
	30° Inclined, Invert Image Infinity Gemel Trinocular Head, Interpupillary Distance 50~76mm; Light Splitting Ratio Switch E100:P0 /E20:8E0 /E0:P100	○ A53.0913 -T30
	5-35° Tiltable, Inverted Image, Infinity Gemel Trinocular Head, Interpupillary Distance 50~76mm; Light Splitting Ratio E50:E50 or E100:P0 or E0:P100	○ A53.0913 -T535
CCD Adapter	0.5x C-Mount, For 1/2"CCD, Focus Adjustable	● A55.0930 -05
	0.35x C-Mount, For 1/2"CCD, Focus Adjustable	○ A55.0930 -35
	0.65x C-Mount, For 1/2"CCD, Focus Adjustable	○ A55.0930 -65
	1.0x C-Mount, For 1"CCD, Focus Adjustable	○ A55.0930 -10
Digital Camera	USB3.0 CMOS Cooling Digital Camera, For Fluorescent Imaging, GS Shutter, 20M, 1" CMOS, 30@1824x1216, Semi-Conductor Cooling Range -42°C, Anti-Frog, One Hour Exposure, C-Mount	● A59.2225 -20MPA
Eyepiece	High Eyepoint Plan PL10x/25mm, Diopter Adjustable	● A51.0904 -1025T
	High Eyepoint Plan PL10x/26.5mm, Diopter Adjustable	○ A51.0904 -10265T
	High Eyepoint Plan PL10x/25mm, Diopter Adjustable, With Reticle	○ A51.0905 -1025T
	High Eyepoint Plan PL10x/26.5mm, Diopter Adjustable, With Reticle	○ A51.0905 -10265T
Objective	Infinity Plan Semi-APO LWD Metallurgical BF/DF DIC Objective	
	5x/0.15, W.D.=13.5mm	● A5M.094 1-5
	10x/0.30, W.D.=9mm	● A5M.094 1-10
	20x/0.50, W.D.=2.5mm	● A5M.094 1-20
	20x/0.40, W.D.=8.5mm	○ A5M.094 1-20A
	50x/0.80, W.D.=1.0mm	● A5M.094 1-50
	100x/0.90, W.D.=1.0mm	● A5M.094 1-100
	Infinity Plan Semi-APO LWD Metallurgical BF DIC Objective	
	5x/0.15, W.D.=19.5mm	○ A5M.094 2-5
	10x/0.30, W.D.=10.9mm	○ A5M.094 2-10
	20x/0.50, W.D.=3.20mm	○ A5M.094 2-20
	50x/0.80, W.D.=1.20mm	○ A5M.094 2-50
	100x/0.90, W.D.=1.0mm	○ A5M.094 2-100
Semi-APO Objective With Correcting Ring 50X/0.70, WD=2.3~2.9mm	○ A5M.094 5-50	
Nosepiece	BF/DF 6 Holes, With Socket For DIC Slide & Polarizing Analyzer Slide, For Metallurgical Coded & Motorized Control by Software	● A54.0930 -RM6BD
DIC	DIC Attachment, Apply For BD Objective	○ A5M.095 2

Focusing	Low-Position Coaxial Coarse & Fine Adjustment, Coarse Adjustment Distance: 25mm; Fine Precision: 0.001Mm. With Coarse Adjustment Stop And Tightness Adjustment.	●	
Main Body	Reflected/Transmitted Body,	●	
	Digital Dimming System With Light Indicator, Brightness Set & Reset Function, With Condenser Holder		
Transmit Light	12V100W Halogen Lamp House, Pre-Centered	●	A56.0915-LH
	12V100W Halogen Bulb (Philps 7724)	●	A56.0923-12100
	Swing-out Type Achromatic Condenser, N.A.0.9/0.25	●	A56.0934-R
	Built-In Transmit Filters LBD/ND6/ND25	●	
Reflect Light	BF/DF Reflect Illuminator, With Iris Field Diaphragm and Aperture Diaphragm, Both Central Adjustable, With Filter Slot and Polarizing Slot, With BF/DF Switch	●	A56.0915-RL
	12V100W Halogen Lamp House, Pre-Centered	●	A56.0915-LH
	12V100W Halogen Bulb (Philps 7724)	●	A56.0923-12100
	Interference Filter, For Reflect Light, Natural White	●	A5M.0953-LBD
	Interference Filter, For Reflect Light, Blue, <480nm	○	A5M.0953-B
	Interference Filter, For Reflect Light, Green, 520~570nm	○	A5M.0953-G
Polarizing For Reflect	Interference Filter, For Reflect Light, Red, 630~750nm	○	A5M.0953-R
	Fixed Polarizer Flashboard	●	A5P.0924-RP
	360° Rotatable Analyzer Flashboard	●	A5P.0924-RA360
Power	Fixed Analyzer Flashboard	○	A5P.0924-RA
	Built-In 100-240V Wide Voltage Transformer, Double-Way Power Output.	●	
Other	Allen Key M3, M4	●	
	Specimen Presser	○	A5M.0920

Remark: '●' Means Standard Outfit, '○' Means Optional

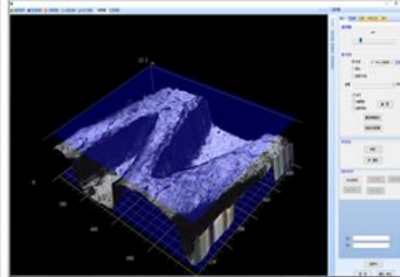




M13.5850

MAXCOPE 3D Full Auto Upright Metallurgical Microscope

The new M13.5850 Research-grade Metallurgical Microscope has upgraded to XYZ motorized working stage model, combined with the powerful Maxscope 2D/3D software, which integrates a number of firsts. From appearance to performance, it closely follows the international leading design trend. MAXCOPE will continue to provide customers with complete 3D industrial inspection solutions.



M13.5850 Metallurgical Microscope

Viewing Head with Multi-splitting Ratio

A13.0910 viewing head is designed of multiple options for splitting ratio. With wide beam imaging system, 26.5mm super wide field of view is available. Trinocular head with erect image makes moving direction of samples is as the same as observed. Splitting ratio switchable between E100:P0 or E0:P100.

Trinocular head with inverted image, splitting ratio E100:P0 or E20:P80 or E0:P100. Except for concentrating 100% light to eyepiece tube or camera tube, there is another option with 20% light to eyepiece tube and 80% to camera tube, so that eyepiece observation and image output can be available at the same time.

Polarization System

The polarizer and analyzer in polarization system contribute to eliminate the stray light in semiconductor and PCB detection, image with clear detail is achievable. There are fixed analyzer and rotatable analyzer for option. The sample can be observed at different polarizing angles with 360° rotatable analyzer. Besides, this polarization system can be upgraded to Nomarski differential interference contrast system after installing a new developed DIC attachment.

Nomarski Differential Interference Contrast (DIC)

The weeny asperities on the surface which can not be found in bright field, is able to be detected by using U-DICR attachment to create high contrast background. It is widely used for testing the conductive particle of LCD, surface scratch of precision disk.

Linkage Between Neutral Density Filter & Switch For BF/DF

The lever in front of illuminator is used to switch between bright field and dark field, and it is in tandem with a neutral density filter (ND50). When you switch from DF to BF, the built-in ND50 filter takes the role to decay the light intensity. More scientific and more comfortable.

Ergonomic Design

- The intensity can be flexibly adjusted by the dimming device which is located on the right side of frame. The voltage change all-digital displays. Adjusting intensity and coaxial focusing at the same time, improves the work efficiency.

- Reflected or transmitted illumination can be switched by the button on the digital dimming display. Using the RE-SET button to keep the light intensity at around 8V (with a camera mark on the dimming display) which is an optimal voltage for photomicrography.

- Four built-in filter holders with three standard filters, one empty holder for optional filter. All the filters can be moved out the optical path by pulling out the lever.

- Low position coaxial focusing system with tension adjustment. The coarse range is 25mm and the fine precision is 0.001mm. The height of a tiny sample, such as solder ball, can be measured.



Erect Image Head

30° Inclined Image Infinity Gemel Trinocular Head,
Interpupillary Distance 50~76mm, Light Splitting
Ratio Switch E100:P0/E0:P100



Light Splitting Ratio Switch
E100:P0/E0:P100



BF/DF Reflect Illumination

Epi Illumination System With Iris Diaphragm, Aperture
Diaphragm, Both Center Adjustable, With BF/DF
Switch, With Polarizer & Analyzer Slot, Filter Slot



BF/DF 6 Holes Nosepiece

6 Holes Nosepiece For Both Bright Field & Dark Field, With Socket
For DIC Slide & Polarizing Analyzer Slide, For Metallurgical. 5 Holes
Optional





4" Large Working Stage

4" Three Layer Mechanical Stage, For Transmit & Reflect Light
 Moving Range 102*105mm, Low Position X/Y Moving Handle, With
 Glass Plate For RT Model, With Metal Plate For R Model



显微-1 宏观

CCD-1 - 相机

10x - 物镜

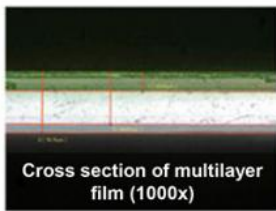
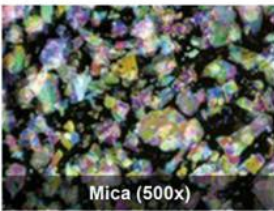
1824 x 1216 - 分辨率

水平翻转 垂直翻转

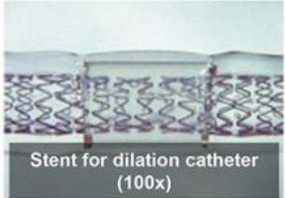
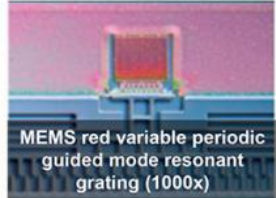
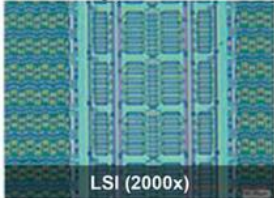
改善图像

属性 ON

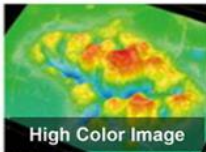
Other



University, Government



Advanced Functional Use



MAXCOP M13.5850 Research 3D Full Auto Super Depth of Field, Upright Metallurgical Microscope

Cooperate with high-quality semi-apoptotic Semi-APO optical system, and transfective lighting device, realize brightfield + darkfield + polarized light + DIC differential interference contrast full-featured observation method, XYZ motorized platform and Maxcope software also provide fully automatic super software It integrates advanced functions such as 2D/3D



high-speed imaging, depth-of-field fusion, auto-focus, etc., and will be the most effective assistant in your work!



Motorized Working Stage, Computer & Software		
Motorized Working Stage	XYZ Motorized Working Stage, 2-Phase Stepping Motor, High Precision Module, Aluminum Alloy Material, Surface Anodized, Anti-Corrosion And Scartch-Resistant	● A54.5831
XY Moving	110x110mm	
Z Moving	20mm	
Resolution	<0.05um	
Max. Speed	50mm/s	
Repeatability	≤20um	
Max. Load	16kg	
Weight	4.8kg	
Computer	PC i5 16G 256G+1T, 1G Graphic Card, 24" LCD	●
Maxcope Software	2D Standard Version, Detail See Software Table	● A30.5801
	2D Advanced Version, Detail See Software Table	○ A30.5802
	3D Professional Version, Detail See Software Table	○ A30.5803
	Customized Function, Detail See Software Table	○ A30.5804



Opto-Edu (Beijing) Co., Ltd.

☎ 0086 13911110627

✉ sale@optoedu.com

🌐 cnoec.com

F-1501 Wanda Plaza, No. 18 Shijingshan Road, Beijing 100043, China