



A59.2205 Usb 2.0 Cmos Microscope Eyepiece Camera Digital 0.92M~12M

Our Product Introduction

Basic Information

- Place of Origin: China
- Brand Name: CNOEC, OPTO-EDU
- Certification: CE, Rohs
- Model Number: A59.2205
- Minimum Order Quantity: 1 pc
- Price: FOB \$1~1000, Depend on Order Quantity
- Packaging Details: Carton Packing, For Export Transportation
- Delivery Time: 5~20 Days
- Payment Terms: T/T, West Union, Paypal
- Supply Ability: 5000 pcs/ Month



Product Specification

- Applications: Microscope
- Certification: CE|Rohs
- Output: USB 2.0
- Product Name: Microscope Accessories
- Resolution: 350K Pixels
- Senser: CMOS
- Highlight: **cmos microscope eyepiece camera, 0.92m microscope eyepiece camera, 12m digital eyepiece camera for microscope**



More Images



for more products please visit us on cnoec.com

Product Description

A59.2205 is an economic version with simple and compact structure CMOS eyepiece camera, USB2.0 is used as the data transfer interface.

A59.2205 microscope eyepiece camera with 23.2 diameter and compact size; comes with high-speed USB2.0 interface and high frame rate video display keep the screen smooth without interruption; it works with advanced video & image processing software Image View, can be widely used to transfer the mono or binocular student microscopes to digital microscope, which as eyepiece tube of 23.2mm

With 23.2mm to 30mm or 23.2mm to 30.5mm convert ring A55.2002 or A55.2004, A59.2205 camera can also change the stereo microscope to digital stereo microscope, which usually has eyepiece tube Dia.30mm or 30.5mm

- USB2.0 Compact Digital Eyepiece Camera With Aptina CMOS Resloution 0.92M~12M
- Easy To Extend to C or CS- Mount Camera, Works On Microscope Eyepiece Tube or Video Port
- High-speed USB2.0 Interface And High Frame Rate Video Display Keep Screen Smooth
- Auto White Balance, Auto-exposure, Brightness, Contrast, Chroma & Saturation Can Be Adjusted
- With Advanced Video & Image Processing Software Image View, Support SDK For Win/Linux/Mac/Android

OPTO-EDU

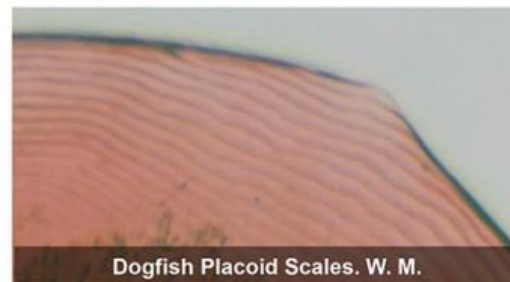
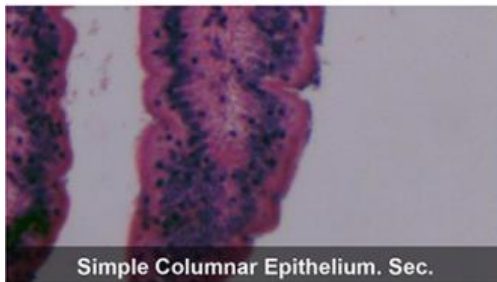
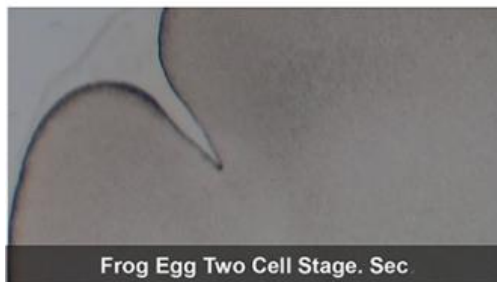


A59.2205 Features & Sample Pictures

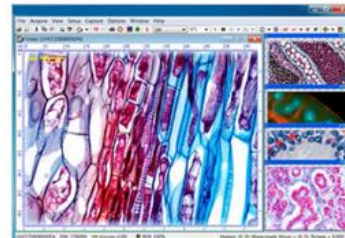
OPTO-EDU



- USB2.0 Compact Digital Eyepiece Camera With Aptina CMOS Resloution 2.1M~12M
- Easy To Extend to C or CS- Mount Camera, Works On Microscope Eyepiece Tube or Video Port
- High-speed USB2.0 Interface And High Frame Rate Video Display Keep Screen Smooth
- Auto White Balance, Auto-exposure, Brightness, Contrast, Chroma & Saturation Can Be Adjusted
- With Advanced Video & Image Processing Software Image View, Support SDK For Win/ Linux/ Mac/ Android



A59.2205 Specification



Order Code	Sensor & Size(mm)	Pixel(μm)	G Responsivity	Dynamic range	SNRmax	FPS/Resolution	Binning	Exposure
The New SCMOS after Jan. 2020 (10)								
12MPA	12M/IMX577@ 1/2.3" (5.95x4.71)	1.55x1.55	250LSB 70dB 43dB			20@3840x3040 20@1920x1520 20@960x760	1x1 1x1 1x1	0.1-2000 ms
0.92MPA	0.92M/OV9732@ 1/4" (3.888x2.208)	3x3	2.066V/lux-sec 72dB@8x gain 39dB			30@1280x720 30@640x360	1x1 1x1	0.1ms~650ms

8.3MPA	8.3M/IMX274© 1/2.5" (6.22x3.50)	1.62x1.62	236mV 70dB 43dB	30@3840x2160 30@1920x1080 30@1280x720 30@960x540	1x1 1x1 1x1	0.1-2000 ms
5.1MPA	5.1M/AR0521© 1/2.5" (5.70x4.28)	2.2x2.2	18.8ke-/lus 73dB 40dB	30@2592x1944 30@1280x960 30@640x480	1x1 1x1 1x1	0.1-1000 ms
5.1MPB	5.1M/IMX335© 1/2.8" (5.18x3.89)	2.0x2.0	505mV 70dB 43dB	26@2592x1944 26@1280x960 26@640x480	1x1 1x1	0.1-2000 ms
3.1MPA	3.1M/Aptina© 1/2.5" (5.73x4.3)	2.8x2.8	18.8ke-/lus 73dB 40dB	30@2048x1536 30@1024x768	1x1 1x1	0.1-1000 ms
2.1MPA	2.1M/IMX307© 1/2.8" (5.73x4.3)	2.9x2.9	1300mV 73dB 43dB	38@1920x1080 38@960x540	1x1 1x1	0.1-2000 ms
8.3MPB	8.3M/IMX415© 1/2.8" (5.57x3.13)	1.45x1.45	300mV 70dB 44dB	30@3840x2160 30@1920x1080 30@1280x720 30@960x540	1x1 1x1 1x1 1x1	0.1-2000 ms
2.1MPB	2.1M/SC2332 © 1/3" (5.18x2.92)	2.7x2.7	4510mV/lux-s 74dB 38.5dB	30@1920x1080 30@960x540	1x1 1x1	0.1-2000 ms

Remark: C - Color, M-Monocolor, GS-GS Shutter

OTHER HARDWARE CONFIGURATION

Spectral Range	380-650nm (with IR-filter)
White Balance	Auto/ROI/Manual White Balance
Color Rendering Tech.	N/A
Capture/Control SDK	Windows/Linux/macOS/Android Multiple Platform SDK(Native C/C++, C#/VB.NET, Python, Java, DirectShow, Twain, etc);
Recording System	Still Picture and Movie
Cooling System*	Natural

OPERATING ENVIRONMENT

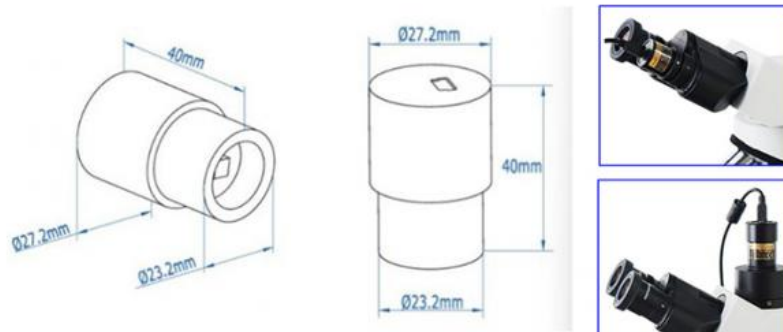
Operating Temperature	-10 °C~ 50 °C
Storage Temperature	-20 °C~ 60 °C
Operating Humidity	30~80%RH
Storage Humidity	10~60%RH
Power Supply	DC 5V over PC USB Port

SOFTWARE ENVIRONMENT

Operating System	Support Microsoft Windows XP / Vista / 7 / 8 / 10(32 & 64 bit) OS X (Mac OS X), Linux
	CPU: Equal to Intel Core2 2.8GHz or Higher
	Memory: 2GB or More
PC Requirements	USB port: USB2.0 High-speed Port Display: 17" or Larger CD-ROM

Dimension of A59.2205 Series Camera

A59.2205 series camera body, made from aluminum alloy blackening, ocular housing: Dia.27.2 X 40mm ensures a heavy duty, workhorse solution. The camera is designed with a high quality IR-CUT filter to filter the infrared light and protect the camera sensor. No moving parts included. This design ensures a rugged, robust solution with an increased lifespan when compared to other industrial camera solutions.



A59.2205 Packing List



Packing List of A59.2205 Series Camera		
Standard Outfit		
A	Carton L:52cm W:32cm H:33cm (50pcs, 12~17Kg/ carton), not shown in the photo	
B	Gift box L:14.5cm W:9.5cm H:6.0cm (0.15~0.15Kg/ box)	
C	Digital eyepiece camera	
D	High-Speed USB2.0 A male to mini B 5-pin male gold-plated connectors cable /1.5m	
E	CD (Driver & utilities software, Ø8cm)	
Optional Accessory		
F	C-Mount Adapter Housing	A59.2205-C
G	Adaptor Rings Dia.23.2mm to 30.0mm For 30.0mm Microscope Eyepiece Tube	A55.2203-30
H	Adaptor Rings Dia.23.2mm to 30.5mm For 30.5mm Microscope Eyepiece Tube	A55.2203-30.5
I	Adaptor Rings Dia.23.2mm to 31.75mm For 31.75mm Telescope Eyepiece Tube	
J	Calibration X=0.01mm/100Div. Stage Micrometer X,Y=0.01mm/100Div X=0.01mm/100Div., 0.10mm/100Div	

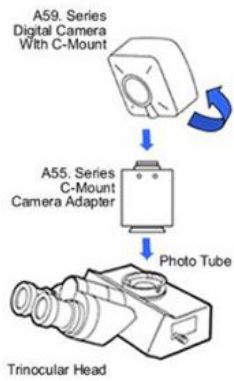
Multi-angle Display



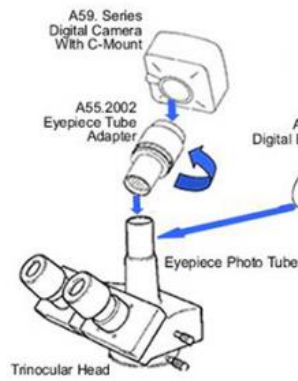
OPTO-EDU

How Camera Connect To Microscope

1. To Trinocular Microscope On Straight Photo Tube



2. To Trinocular Microscope On Eyepiece Photo Tube



3. To Binocular Microscope On Eyepiece Tube

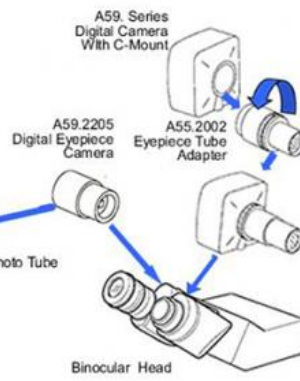


Image View Software for Windows

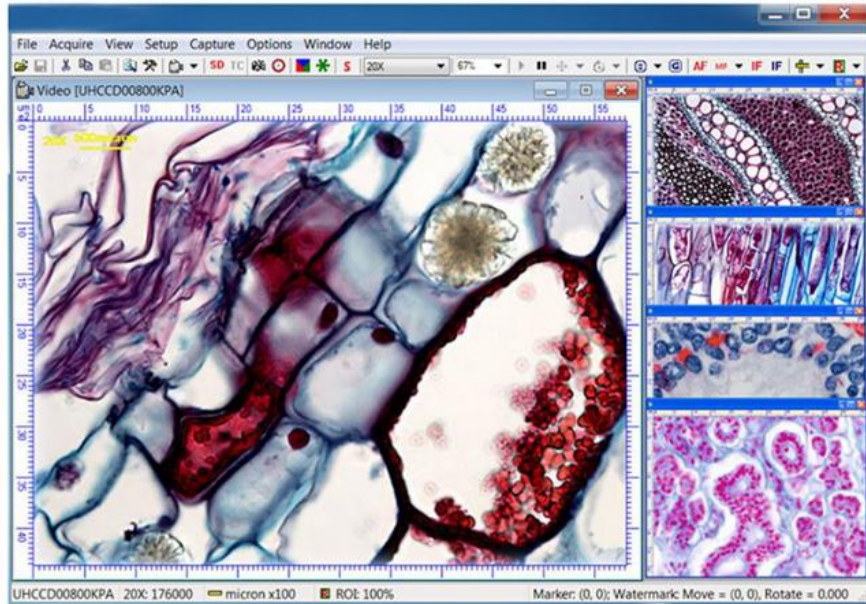
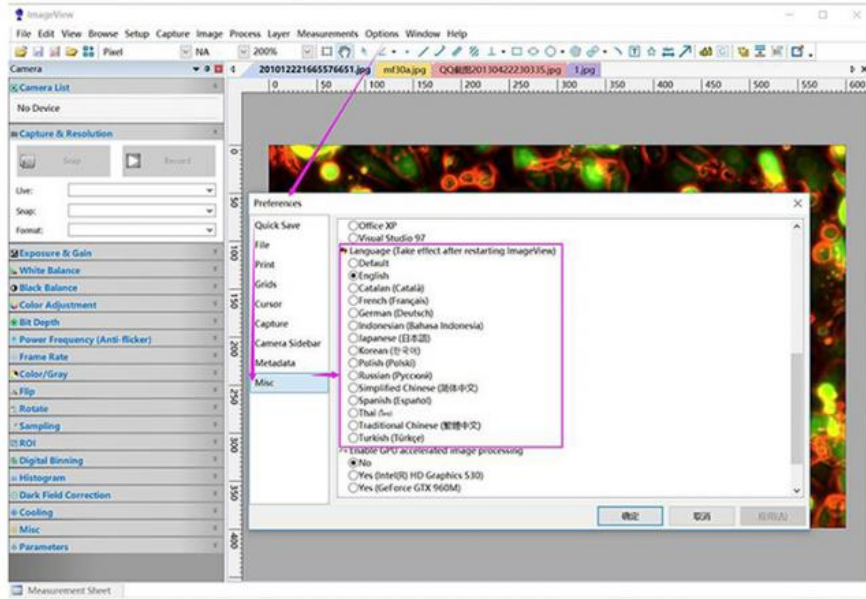
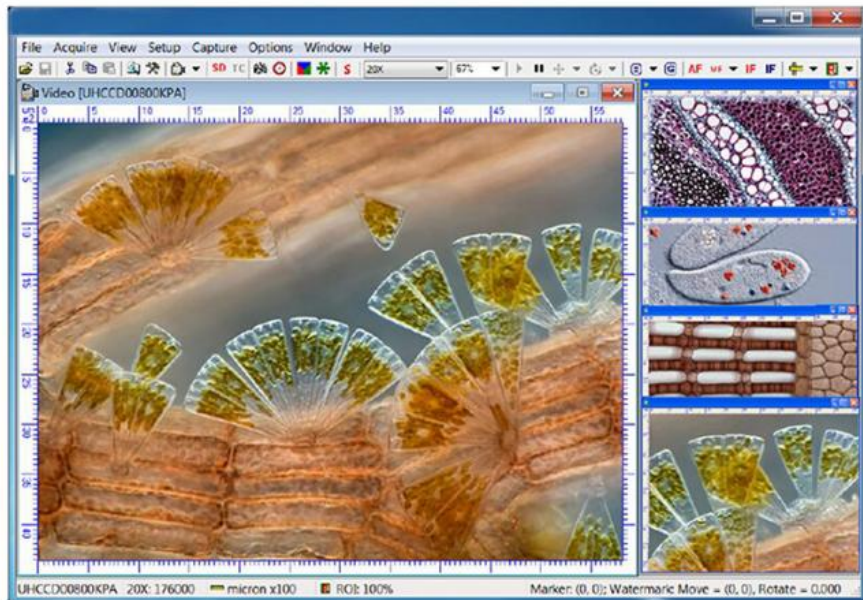
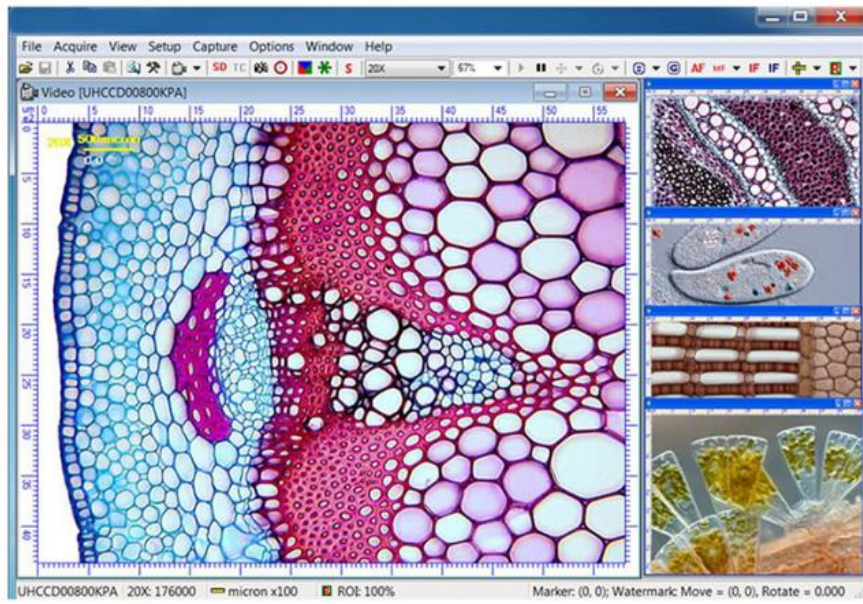


Image View Software for Windows



More Pictures

OPTO-EDU





Opto-Edu (Beijing) Co., Ltd.

☎ 0086 13911110627

✉ sale@optoedu.com

🌐 cnoec.com

F-1501 Wanda Plaza, No. 18 Shijingshan Road, Beijing 100043, China