



A59.2208 Microscope Accessories Usb 2.0 Cmos Digital Camera 0.35m~12m

Our Product Introduction

for more products please visit us on cnoec.com

Basic Information

- Place of Origin: China
- Brand Name: CNOEC, OPTO-EDU
- Certification: CE, Rohs
- Model Number: A59.2208
- Minimum Order Quantity: 1 pc
- Price: FOB \$1~1000, Depend on Order Quantity
- Packaging Details: Carton Packing, For Export Transportation
- Delivery Time: 5~20 Days
- Payment Terms: T/T, West Union, Paypal
- Supply Ability: 5000 pcs/ Month

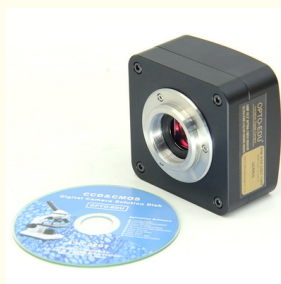


Product Specification

- Applications: Microscope
- Certification: CE|Rohs
- Output: USB 2.0
- Product Name: Microscope Accessories
- Resolution: 350K Pixels
- Sensor: CMOS
- Spectral Range: 380-650nm (with IR-filter), For Monochromatic Camera, AR Is Used
- Recording System: Still Picture And Movie
- Highlight: **1.3m microscope accessories, usb microscope accessories, usb 2.0 cmos digital camera**



More Images



Product Description

A59.2208 is an ultra-high performance CMOS camera and it adopts ultra-high performance CMOS sensor as the image-picking device. USB2.0 is used as the data transfer interface.

A59.2208 camera hardware resolutions range from 0.35M to 12M and comes with the Integrated zinc aluminum alloy compact housing.

A59.2208 comes with advanced video & image processing software Image View; providing Windows/Linux/macOS/Android multiple platform SDK(Native C/C++, C#/VB.NET, Python, Java, DirectShow, Twain, etc);

A59.2208 can be widely used in brightfield light environment and microscope image capture and analysis with moderate frame rate.

- USB2.0 Digital Camera With Aptina CMOS Sensors Resloution 0.35M~12M
- Integrated Zinc Aluminum Alloy Housing, With Ultra-Fine TM Color Engine
- High-speed USB2.0 Interface And High Frame Rate Video Display Keep Screen Smooth
- Auto White Balance, Auto-exposure, Brightness, Contrast, Chroma & Saturation Can Be Adjusted
- With Advanced Video & Image Processing Software Image View, Support SDK For Win/Linux/Mac/Android

OPTO-EDU



A59.2208 USB2.0 Aptina CMOS Digital Camera, 0.35M~12M

A59.2208 is an ultra-high performance CMOS camera and it adopts ultra-high performance CMOS sensor as the image-picking device. USB2.0 is used as the data transfer interface.

A59.2208 camera hardware resolutions range from 0.35M to 12M and comes with the Integrated zinc aluminum alloy compact housing.

A59.2208 comes with advanced video & image processing software Image View; providing Windows/Linux/macOS/Android multiple platform SDK(Native C/C++, C#/VB.NET, Python, Java, DirectShow, Twain, etc);

A59.2208 can be widely used in brightfield light environment and microscope image capture and analysis with moderate frame rate.

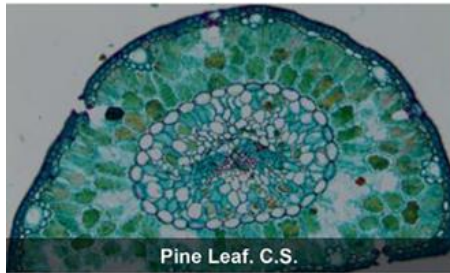


A59.2208 Features & Sample Pictures

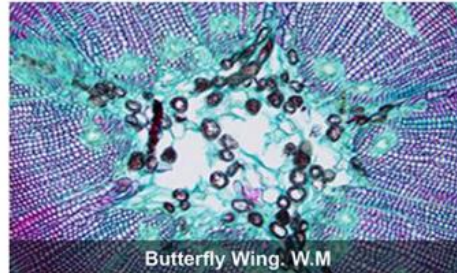
OPTO-EDU



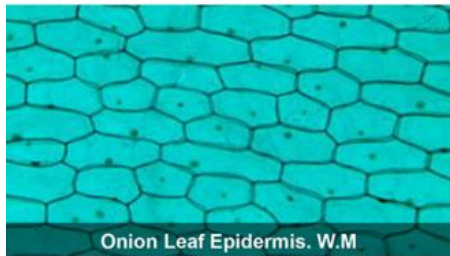
- USB2.0 Digital Camera With Aptina CMOS Sensors Resloution 0.35M~12M
- Integrated Zinc Aluminum Alloy Housing, With Ultra-Fine TM Color Engine
- High-speed USB2.0 Interface And High Frame Rate Video Display Keep Screen Smooth
- Auto White Balance, Auto-exposure, Brightness, Contrast, Chroma & Saturation Can Be Adjusted
- With Advanced Video & Image Processing Software Image View, Support SDK For Win/Linux/Mac/Android



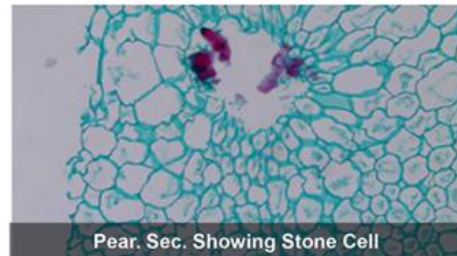
Pine Leaf. C.S.



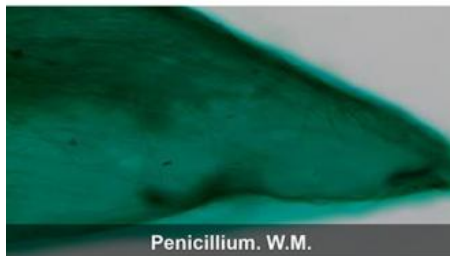
Butterfly Wing. W.M



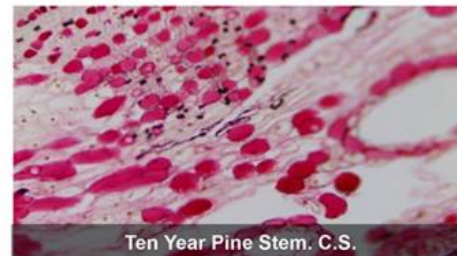
Onion Leaf Epidermis. W.M



Pear. Sec. Showing Stone Cell

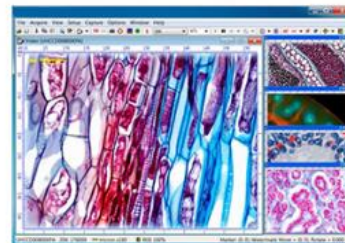


Penicillium. W.M.



Ten Year Pine Stem. C.S.

A59.2208 Specification



Order Code	Sensor & Size(mm)	Pixel(μm)	G Responsivity Dynamic range SNRmax	FPS/Resolution	Binning	Exposure
12MPA	12M/IMX577© 1/2.1" (5.95x4.71)	1.55x1.55	250mv with 1/30s 0.25mv with 1/30s	3@3840x3040 11@1920x1516 47@960x758	1x1 2x2 4x4	0.4ms~2000ms
10MPA	10M/IMX577© 1/2.3" (5.56x4.26)	1.55x1.55	250mv with 1/30s 0.25mv with 1/30s	3.3@3584x2748 12@1792x1374 53@896x684	1x1 2x2 4x4	0.4ms~2000ms
9MPB	9M/Special© 1/2.4"(5.41x4.05)	1.55x1.55	250mv with 1/30s 0.25mv with 1/30s	3.5@3488x2616 13@1744x1308 55@872x654	1x1 2x2 4x4	0.4ms~2000ms

8MPB	8M/Special© 1/2.5" (5.06x3.79)	1.55x1.55	250mv with 1/30s 0.25mv with 1/30s	4@3264x2448 15@1600x1200 62@800x600	1x1 2x2 4x4	0.4ms~2000ms
5.1MPA	5.1M/AR0521© 1/2.5" (5.70x4.28)	2.2x2.2	18.8ke-/lux 73dB 40dB	7.0@2592x1944 27.7@1296x972 100.5@648x486	1x1 2x2 4x4	0.2ms~2000ms
4.1MPB	4.1M/IMX664© 1/1.8" (7.795x4.408)	2.9x2.9	5970mv with HCG mode 0.13mv with 1/30s	8.5@2688x1520 34@1344x760	1x1 2x2	0.1ms~2000ms
1.23MPA	1.23M/SC1235© 1/3" (4.80x3.60)	3.75x3.75	4.5V/lux-sec 74dB 38dB	15@1280x960 15@1280x720	1x1 1x1	0.14ms~2000ms

Remark: C - Color, M-Monocolor, GS-GS Shutter

OTHER HARDWARE CONFIGURATION	
Spectral Range	380-650nm (with IR-filter), for Monochromatic Camera, AR Is Used
White Balance	ROI White Balance/ Manual Temp-Tint Adjustment
Color Rendering Tech.	Ultra Fine Color Engine
Capture/Control SDK	Windows/Linux/macOS/Android Multiple Platform SDK(Native C/C++, C#/VB.NET, Python, Java, DirectShow, Twain, etc)
Recording System	Still Picture and Movie
Cooling System*	Two-stage TE-cooling System -42 °C below Camera Body Temperature
OPERATING ENVIRONMENT	
Operating Temperature	-10 °C~ 50 °C
Storage Temperature	-20 °C~ 60 °C
Operating Humidity	30~80%RH
Storage Humidity	10~60%RH
Power Supply	DC 5V over PC USB Port
SOFTWARE ENVIRONMENT	
Operating System	Support Microsoft Windows XP / Vista / 7 / 8 /10(32 & 64 bit) OS X (Mac OS X), Linux CPU: Equal to Intel Core2 2.8GHz or Higher Memory: 2GB or More
PC Requirements	USB port: USB2.0 High-speed Port Display: 17" or Larger CD-ROM
Dimension of A59.2208 Series Camera	

A59.2208 Series USB2.0 Camera body, made from tough, CNC alloy, ensures a heavy duty, workhorse solution. The camera is designed with a high quality IR-CUT to protect the camera sensor. No moving parts included. This design ensures a rugged, robust solution with an increased life span when compared to other industrial camera solutions.



A59.2208 Packing List



Packing List of A59.2208 Series Camera
Standard Outfit

A	arton L:52cm W:32cm H:33cm (20pcs, 12~17Kg/ carton), not shown in the photo			
B	Gift box L:15cm W:15cm H:10cm (0.5~55Kg/ box)			
C	Digital camera			
D	High-speed USB2.0 A male to B male gold-plated connectors cable /2.0m			
E	CD (Driver & utilities software, Ø12cm)			
Optional Accessory				
F	Focus Adjustable Eyepiece Adapter	For Microscope	0.37x, C-Mount to Dia.23.2mm	A55.2202-A37
			0.50x, C-Mount to Dia.23.2mm	A55.2202-A50
			0.75x, C-Mount to Dia.23.2mm	A55.2202-A75
		For Telescope	0.37x, C-Mount to Dia.31.75mm	A55.2204-A37
			0.50x, C-Mount to Dia.31.75mm	A55.2204-A50
			0.75x, C-Mount to Dia.31.75mm	A55.2204-A75
G	Focus Fixed Eyepiece Adapter	For Microscope	0.37x, C-Mount to Dia.23.2mm	A55.2202-F37
			0.50x, C-Mount to Dia.23.2mm	A55.2202-F50
			0.75x, C-Mount to Dia.23.2mm	A55.2202-F75
		For Telescope	0.37x, C-Mount to Dia.31.75mm	A55.2204-F37
			0.50x, C-Mount to Dia.31.75mm	A55.2204-F50
			0.75x, C-Mount to Dia.31.75mm	A55.2204-F75
H	Adaptor Rings Dia.23.2mm to 30.0mm For 30.0mm Microscope Eyepiece Tube		A55.2203-30	
I	Adaptor Rings Dia.23.2mm to 30.5mm For 30.5mm Microscope Eyepiece Tube		A55.2203-30.5	
J	Adaptor Rings Dia.23.2mm to 31.75mm For 31.75mm Telescope Eyepiece Tube		A55.2203-31.75	
K	Calibration Stage Micrometer	X=0.01mm/100Div.		
		X,Y=0.01mm/100Div		
		X=0.01mm/100Div., 0.10mm/100Div		

Camera Connect To Microscope



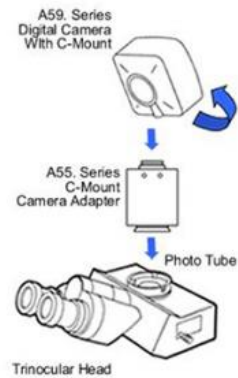
A55.2002
C-Mount to 23.2mm Adapter
For Microscope

A55.2004
C-Mount to 31.75mm Adapter
For Telescope

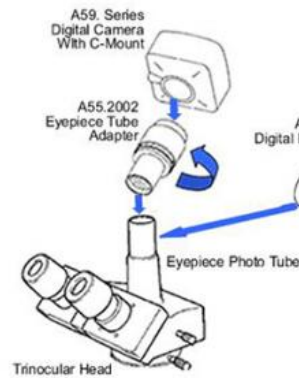
OPTO-EDU

How Camera Connect To Microscope

1. To Trinocular Microscope On Straight Photo Tube



2. To Trinocular Microscope On Eyepiece Photo Tube



3. To Binocular Microscope On Eyepiece Tube

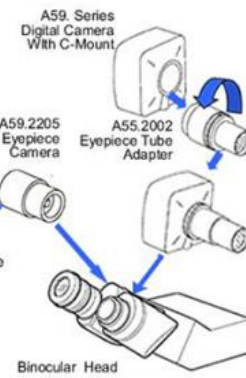


Image View Software for Windows

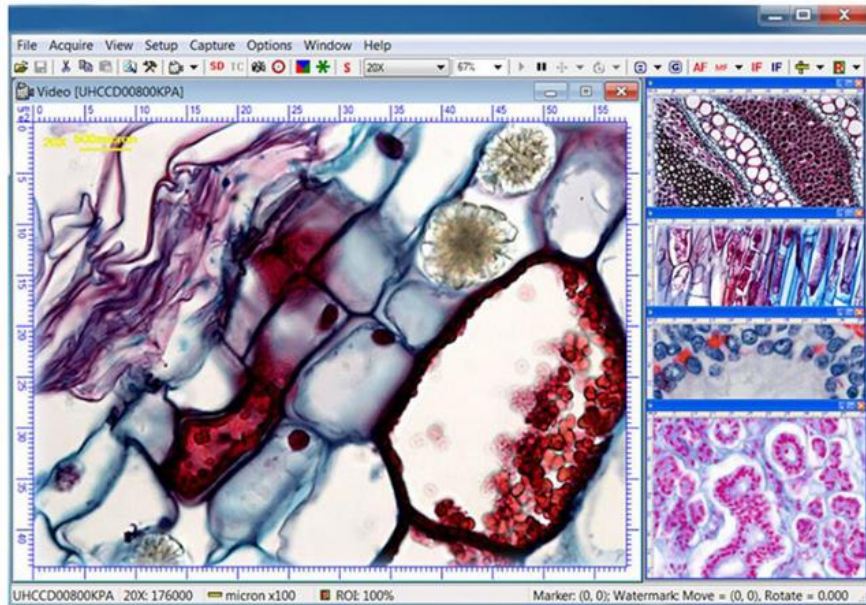
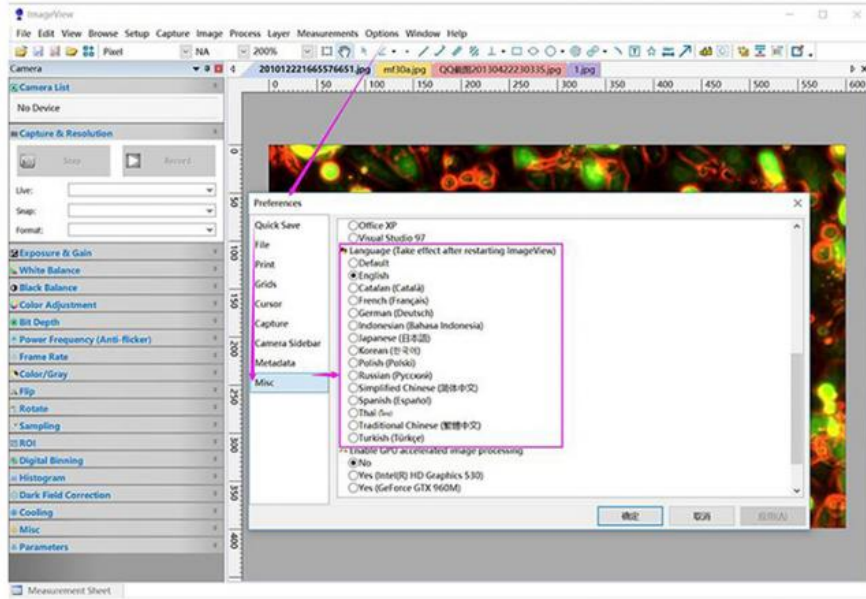
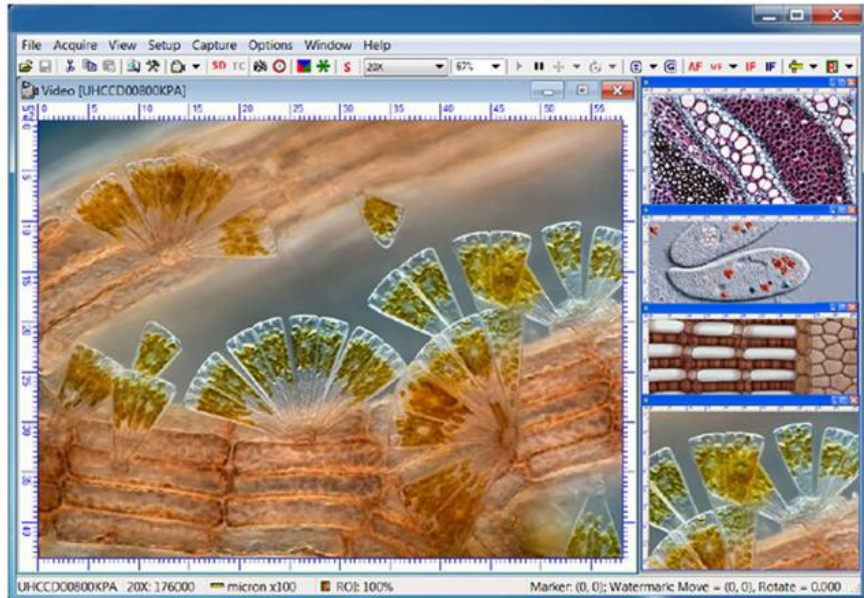
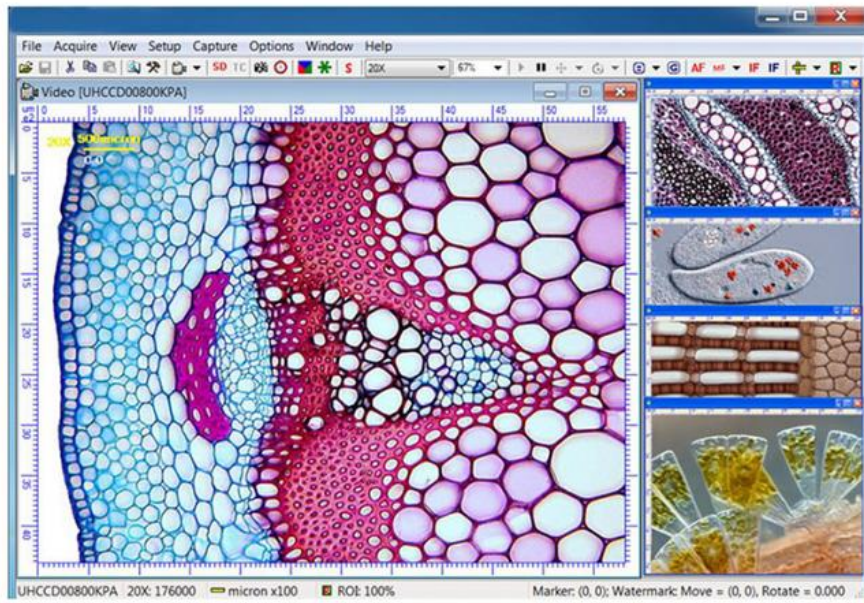


Image View Software for Windows



More Pictures

OPTO-EDU








Opto-Edu (Beijing) Co., Ltd.

 0086 13911110627

 sale@optoedu.com

 cnoec.com

F-1501 Wanda Plaza, No. 18 Shijingshan Road, Beijing 100043, China