



## Dual Head Motor Operating Microscope Ophthalmology Zoom 4.5x~27.3x A41.1935

Our Product Introduction

### Basic Information

- Place of Origin: China
- Brand Name: CNOEC, OPTO-EDU
- Certification: CE,
- Model Number: A41.1935
- Minimum Order Quantity: 1 pc
- Price: FOB \$1~1000, Depend on Order Quantity
- Packaging Details: Carton Packing, For Export Transportation
- Delivery Time: 5~20 Days
- Payment Terms: T/T, West Union, Paypal
- Supply Ability: 5000 pcs/ Month



### Product Specification

- Binocular Observation: Tilting Head 0°-180° Viewing Angle Adjustable For User
- Magnification Of Binocular: 8X
- Magnification Of Eyepiece: 12.5X
- Interpupillary Distance: 50mm-80mm
- Diopter: ±7D
- Magnification Changer: 3-step Magnification Change: 0.6X,1X,1.6X
- Focal Length Of Objective: Two Objectives: F=200 & F=250mm (M45x0.75mm)
- Total Magnification: 4.8X, 8X, 12.8X, 6X, 10X, 16X
- Linear Field: 50mm, 30mm, 19mm, 40mm, 24mm, 15mm
- Filter: Built-in Green And Yellow Filters
- Highlight: **Dual Head Motor Operating Microscope Ophthalmology**  
**Zoom 4.5x Operating Microscope Ophthalmology**

for more products please visit us on [cnoec.com](http://cnoec.com)

Dual Head Motor Operating Microscope Ophthalmology Zoom 4.5x~27.3x A41.1935

A41.1931, A41.1932, A41.1935 Surgical Operation Microscope			
<p><b>A41.1931</b> Operating Microscope, is Best Choice for Ophthalmology Operation. It has two heads both inclined 45°, using fiber-optic cable for coaxial illumination up to 60000 lux, manual 3 steps zoom body, total magnification 6x,10x,16x, standard objective F=200mm, optional objectives F=175mm, 250mm, 300mm, 350mm, 400mm, 450mm. Featured with 2 functions foot switch to control motorized Z focus, it is widely used in hospital for Ophthalmology.</p> <p><b>A41.1932</b> is upgraded version, with 6 functions foot switch to control motorized X/Y move, Z focus.</p> <p><b>A41.1935</b> is the highest model in this series, with motorized zoom 4.5x~27.3x objective, dual fiber halogen fiber light 100000 lux, 8 functions foot switch to control motorized X/Y move, Z focus &amp; Zoom.</p> <p>All 3 models can upgrade with optional beam splitter, SLR camera adapter, phone holder, CCD adapter for digital camera, for sharing real time image to LCD monitor, mobile phone or computer.</p> <p><b>Features:</b></p> <ul style="list-style-type: none"> <li>--Dual Head 90° Opposite, With Red Reflection &amp; Macular Protector, For Ophthalmology</li> <li>--Eyepiece 12.5x, 3 Steps Manual Zoom 6x10x16x, or Continuous Zoom 4.5x~27.3x</li> <li>--Objective F=200mm, 2nd Objective F=125mm, Halogen Cold Light, Max Brightness 60000 Lux to 100000 Lux</li> <li>--2 Functions, 6 Functions, 8 Functions Foot Switch, Control X/Y Move, Z Focus, Zoom</li> <li>--Four Wheels Stand Swing Angle of Carry Arm 0~300°, Height From Objective to Floor 800mm</li> </ul>			
	A41.1931	A41.1932	A41.1935
Main Usage	With Red Reflection & Macular Protector, For Ophthalmology		
Eyepiece	WF12.5x		
Head	Dual Heads For Two People Operation, Opposite In 90°, Interpupillary Distance 55~75mm, Both Left & Right Eyetube Diopter Adjustable ±6D		
Main Head	Inclined 45°	Inclined 45°	Inclined 30°~90°
Magnification	3 Steps 6x, 10x, 16x	3 Steps 6x, 10x, 16x	4.5x~27.3x Continuous Zoom
View Field	Dia.34mm, 20mm, 13mm	Dia.34mm, 20mm, 13mm	Dia.44~7.7mm
Zoom Body	1:6 Motorized Continuous Zoom, Parallel Light System		
Assistant Head	Inclined 45°		
Magnification	3 Steps 6x, 10x, 16x	3 Steps 6x, 10x, 16x	3 Steps 6.5x, 10.8x, 17.3x
View Field	Dia.34mm, 20mm, 13mm	Dia.34mm, 20mm, 13mm	Dia.30.5mm, 18.3mm, 11.4mm
Main Objective	F=200mm, Optional F=175mm, 250mm, 300mm, 350mm, 400mm, 450mm		
Assistant Obj.	F=125mm		
Focus	Motorized Focus, Range +/-50mm, Speed 33s/Full Distance		
Control	2 Functions Foot Switch, Control Z Focus	6 Functions Foot Switch, Control X/Y Move, Z Focus	8 Functions Foot Switch, Control X/Y Move, Z Focus, Zoom
Stand	Four Wheels Moving Stand --Max Extended Length 1100mm --Max Rotatable Swing Angle of Arm 0~300° --Distance Between Objective And Ground Surface 800mm~1250mm		
Illumination	Optical Fiber Coaxial Halogen Cold Light, Light Spot Dia.50mm, Intensity 60000 Lux.		Dual Optical Fiber Coaxial Halogen Cold Light, Light Spot Dia.50mm, Intensity 100000 Lux.
Packing	3 Cartons Total G.W 104Kg, Volume 0.3462CBM  Head: 595×460×230(mm)/14kg Body: 1180×535×230 (mm)/45kg  Stand:775*775*230(mm)/45kg		4 Cartons Total G.W 165Kg Volume 0.45CBM Head:595×460×230(mm)/14KG Body:890×650×265(mm)/41KG Control:1025×260×300(mm)/32KG G Stand:890×865×200(mm)/78KG



OPTO-EDU (BEIJING) CO., LTD.

OPTO-EDU

F-1501 Wanda Plaza, No.18 Shijingshan Road, Beijing 100043, China  
Tel:+8610 88696020 Fax:+8610 88696085

**A41.1935**

Operating Microscope, Dual Head, Motor Zoom,  
4.5x~27.3x, 8 Function Foot Switch,  
For Ophthalmology



**A41.1935 Details**

**OPTO-EDU**

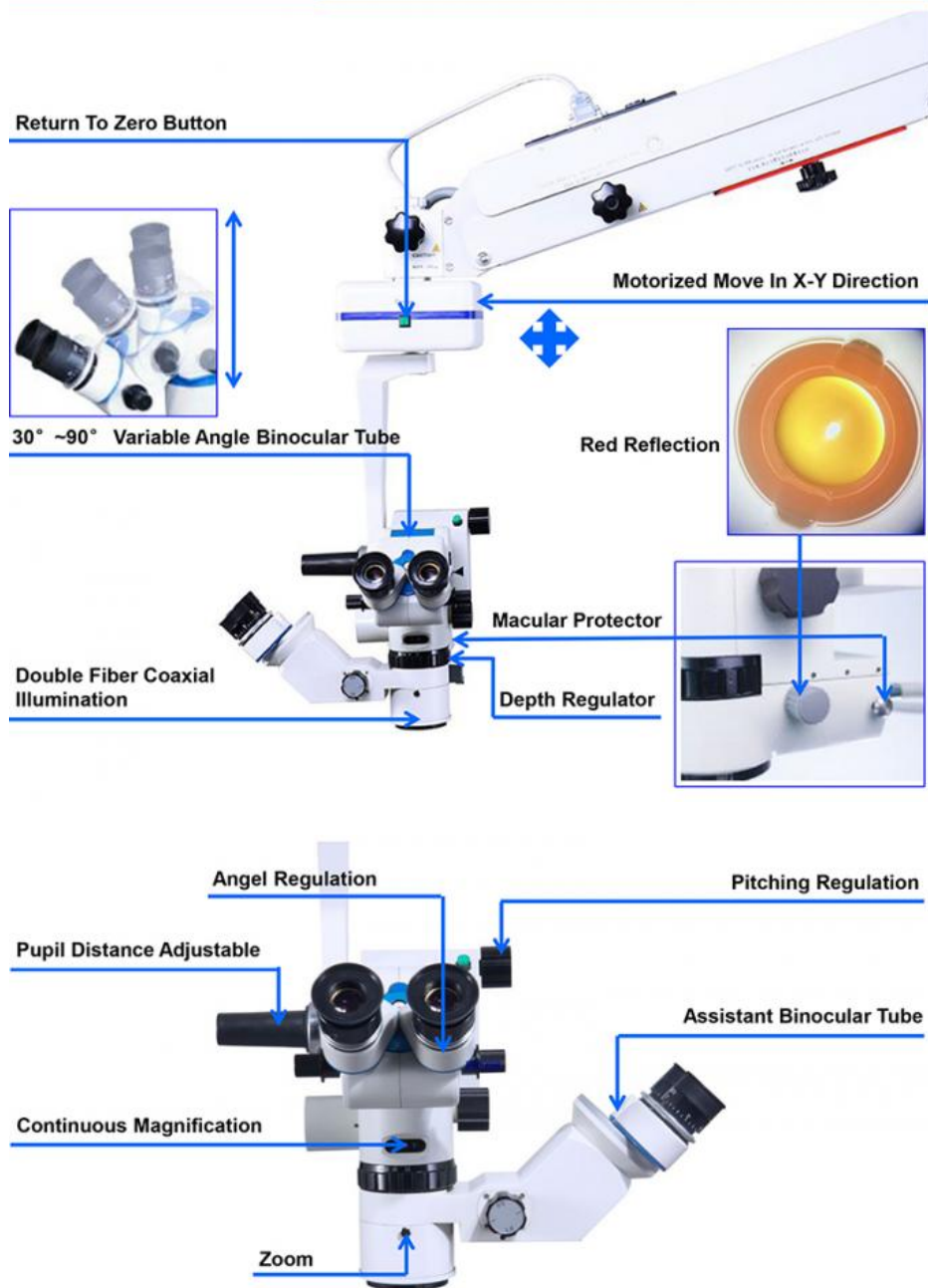


## A41.1935 Operating Microscope, Dual Head, Motor Zoom, 4.5x~27.3x, 8 Function Foot Switch, For Ophthalmology

- Dual Head 90° Opposite, With Red Reflection & Macular Protector, For Ophthalmology
- Eyepiece 12.5x, Motorized Zoom 1:6, 4.5x~27.3x, View Field Dia. 44~7.7mm, Objective F=200mm
- Main Head 30~90° Assistant Head 30°, Manual 3 Step Zoom 6.5x10.8x17.3x, 2nd Objective F=180mm
- Dual Optical Fiber Halogen Light, Max Brightness 100000Lux, Light Spot Dia.50mm
- 8 Functions Foot Switch, Motorized Zoom+XYZ Move, Four Wheels Stand, Max 1200mm

### A41.1935 Details

OPTO-EDU





Adjustable Eyecup In Eyepiece For With Glass And Without Glass



Interpupillary Distance 55-75mm



30° -90° Binocular Tube Can Suitable For Different Surgeons



Application Of Knob Interlocking System In Glaucoma, Inclination Range:  $\pm 90^\circ$



The Assistant Tube Can Rotate 180 Degrees Around The Main Tube To Meet Different Observation Needs



LED And Halogen, Can Use Together At The Same Time, Also Can Only Use LED Or Halogen Lamp



Equipped With Spare Light Bulb, Switched Quickly During Operation



Adjustable Macular Protector  
Macular Protector Can Protect Retina

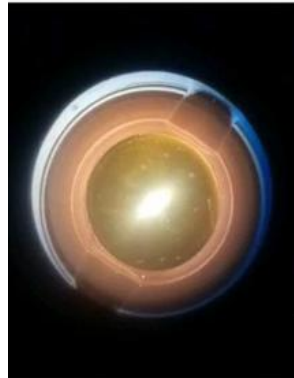




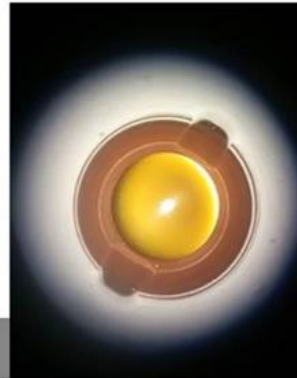
Electric & Manual Infinite Zoom



8 Functions Footswitch: X-Y Moving ,Zoom ,Focusing



Red Reflection Continuous Regulation

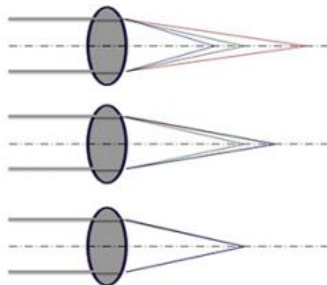


## A41.1935 Details

**OPTO-EDU**

### WF12.5X High Point Eyepiece

The unique design of the optical system, convenient for doctors with glasses.

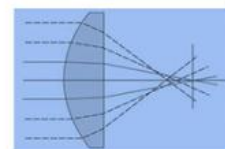
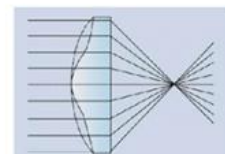


### Complex Achromatic Objective Lens

Optical design of apochromatic correction can not only red green and blue three colors. Can correct the aberration of red, blue two color lights. Improve image resolution, contrast and depth of field

### Aspheric Lighting Technology, Better Light Gathering Effect

The spherical illumination can not refract the light to the same surface, and cause the light to be more dispersed on the surface. The aspheric technology can increase the concentration effect and improve the brightness.





### Multilayer Coating Technology, The Light Transmittance Is Up To 98%

Through multilayer coating technology, we can reduce light reflection attenuation, increase light transmission and improve brightness. The multilayer coating technology we use can achieve optical energy passing rate of 98%.

### Depth Regulator To Increase Field Depth Of Field Of View

In theory, only focal plane imaging is clear, but the operative surface is not in the same plane during the actual operation. The depth of field adjuster can make the imaging more extensive before and after the focus. There is no need for frequent focus adjustment in the operation.



## A41.1935 Camera System

OPTO-EDU



### Camera System

Configure the wireless mouse operation, without the computer, free access to high definition images. The product interface is rich, HDMI and USB are synchronously output, high speed SD cards are photographed or recorded video. At the same time, it has the same screen image contrast, HDR (wide dynamic), image freezing, image inversion, digital amplification and other functions. It is widely used in video conferencing, telemedicine, micrograph, video projection and other fields.



A41.1931



A41.1932



A41.1935

**BIOM System**



**BIOM KIT For Fundus Surgery**



Size	138*50*170mm
Weight	0.5kg
Storage And Operating Conditions	Temperature:+10°C To +40°C
Sterility	Sterilize Before Use
Materials	Surgical Grade Materials
Condenser Lens Assembly	Manual
Lens Positioning Unit	Rotational Assembly
Lenses	130°
	90°
Mounting Kits	Zeiss
	Leica
	Topcon
	Takagi



# A41.19 Series Model & Selection Guide



Picture	Model	Magnification	Head & C-Mount	Standard Objective	Optional Objective	Optional	Light Source	Control	Package	Application
	A41.1921	6 Steps, 2.7x, 4.5x, 7.2x, 10.8x, 18x, 27x	One Head 0°-200°	F=250mm	F=175mm F=200mm F=300mm F=350mm F=400mm F=450mm F=180-300mm F=200-500mm	Assistant Head Beam Splitter SLR Adapter Phone Holder CCD Adapter	LED 60000 lux	Manual	3 Cartons, Total G.W 111Kg, Volume 0.381CBM	ENT Dental
	A41.1926	2.5x-21x	One Head 0°-200°	F=250mm	F=175mm F=200mm F=300mm F=350mm F=400mm F=450mm F=180-300mm F=200-500mm	Assistant Head Beam Splitter SLR Adapter Phone Holder CCD Adapter	LED 60000 lux	Manual	3 Cartons, Total G.W 111Kg, Volume 0.381CBM	ENT Dental
	A41.1931	3 Steps, 6x, 10x, 16x	Dual Head 90° 45°+45°	F=200mm	F=175mm F=250mm F=300mm F=350mm F=400mm F=450mm	Beam Splitter SLR Adapter Phone Holder CCD Adapter	Halogen 60000 lux	2 Function Foot Switch Z (Focus)	3 Cartons, Total G.W 104Kg, Volume 0.346CBM	Ophthalmology Fundus Surgery
	A41.1932	3 Steps, 6x, 10x, 16x	Dual Head 45°+45°	F=200mm	F=175mm F=250mm F=300mm F=350mm F=400mm F=450mm	Beam Splitter SLR Adapter Phone Holder CCD Adapter	Halogen 60000 lux	6 Function Foot Switch X/Y/Z	3 Cartons, Total G.W 104Kg, Volume 0.346CBM	Ophthalmology Fundus Surgery
	A41.1936	Motor Zoom 4.5x-27.3x	Dual Head 30°-90°+45°	F=200mm	F=175mm F=250mm F=300mm F=350mm F=400mm F=450mm	Beam Splitter SLR Adapter Phone Holder CCD Adapter	Halogen Dual Fiber 100000 lux	8 Function Foot Switch X/Y/Z/Zoom	4 Cartons, Total G.W 165Kg, Volume 0.45CBM	Ophthalmology Fundus Surgery
	A41.1941	3 Steps, 6x, 10x, 16x	Dual Head 45°+45°	F=200mm	F=175mm F=250mm F=300mm F=350mm F=400mm F=450mm	Beam Splitter SLR Adapter Phone Holder CCD Adapter	Halogen 60000 lux	2 Function Foot Switch Z (Focus)	3 Cartons, Total G.W 104Kg, Volume 0.346CBM	Orthopedics, Plastic Surgery, Hand Surgery, Thoracic Surgery
	A41.1942	3 Steps, 6x, 10x, 16x	Dual Head 45°+45°	F=200mm	F=175mm F=250mm F=300mm F=350mm F=400mm F=450mm	Beam Splitter SLR Adapter Phone Holder CCD Adapter	Halogen 60000 lux	6 Function Foot Switch X/Y/Z	3 Cartons, Total G.W 104Kg, Volume 0.346CBM	Orthopedics, Plastic Surgery, Hand Surgery, Thoracic Surgery
	A41.1945	Motor Zoom 4x-24x	Dual Head 30°-90°+45°	F=200mm	F=175mm F=250mm F=300mm F=350mm F=400mm F=450mm	Beam Splitter SLR Adapter Phone Holder CCD Adapter	Halogen Dual Fiber 100000 lux	8 Function Foot Switch X/Y/Z/Zoom	4 Cartons, Total G.W 165Kg, Volume 0.45CBM	Orthopedics, Plastic Surgery, Hand Surgery, Thoracic Surgery
	A41.1960	Motor Zoom 3x-16x	Dual Head 30°-90°+0° Beam Splitter	F=300mm Or F=250mm	F=175mm F=200mm F=250mm F=300mm F=350mm F=400mm F=450mm	SLR Adapter Phone Holder CCD Adapter	Halogen Dual Fiber 100000 lux	8 Function Handle or Foot Switch X/Y/Z/Zoom	4 Cartons, Total G.W 169Kg, Volume 0.45CBM	Neurosurgery Brain Surgery Dental ENT
	A41.1951	1.8x-21x	Dual Head 0°-200°+0° Beam Splitter Built-in CCD Software	Built-in F=200-450mm	/	SLR Adapter Phone Holder	LED +Halogen Dual Fiber 100000 lux	12 Function Handle X/Y/Z/Zoom Auto Focus XY Pendulum Photo/Video Brightness	4 Cartons, Total G.W 169Kg, Volume 0.45CBM	Neurosurgery Brain Surgery Dental ENT

## A41.19 Series Optional Accessories

**OPTO-EDU**

Optional Accessories		Optional For	Cata. No
Objective		F=175mm	A52.1941-175
		F=200mm	A52.1941-200
		F=250mm	A52.1941-250
		F=300mm	A52.1941-300
		F=350mm	A52.1941-350
		F=400mm	A52.1941-400
		F=450mm	A52.1941-450
Zoom Objective		F=180-300mm	A41.192x Series A52.1941-180300
		F=200-500mm	A41.192x Series A52.1941-200500
Head		Assistant Binocular Head	A41.192x Series A53.1941
Beam Splitter		Wedge-shaped Splitter, 1 Port	A41.192x Series A55.1941
		Beam Splitter, 2 Ports	A41.193x Series A41.194x Series A55.1942
Adapter		SLR Digital Camera Adapter, For Canon or Nikon (Need Confirm Which Brand When Order)	A41.192x Series A41.193x Series A41.194x Series A41.195x Series All Models A55.1943
		Mobile Phone Adapter & Holder	A41.192x Series A41.193x Series A41.194x Series A41.195x Series All Models A55.1944
		Digital CCD Camera Adapter	A41.192x Series A41.193x Series A41.194x Series A41.195x Series All Models A55.1945
Digital Camera		38M, 1/2.3", Output HDMI+USB+TF Card, HDMI Resolution Photo 60M, Video 2K@30FPS, 1080p@60FPS, USB Resolution 2.0M, HDMI+USB Output At Same Time, USB Measuring Function, Input DC12V, C/CS Mount, Including HDMI Cable, USB Cable, Remote Controller, Adapter, Manual, 16G TF Card	A41.192x Series A41.193x Series A41.194x Series A41.195x Series All Models A59.4231
Light Source		Xeon Light Source, 250W	A41.193x Series A41.194x Series A41.195x Series A56.4844
BIOM System Kit		For Fundus Surgery, Splitter+Holder+130°+90° Lens, Mounting Kits For Zeiss, Leica, Topcon, Takagi, Corder	A41.193x Series A55.1931



Opto-Edu (Beijing) Co., Ltd.

☎ 0086 13911110627

✉ sale@optoedu.com

🌐 cnoec.com

F-1501 Wanda Plaza, No. 18 Shijingshan Road, Beijing 100043, China