



## OPTO EDU A13.3601 Binocular Metallurgical Microscope Transmit And Reflect Light

Our Product Introduction

for more products please visit us on [cnoec.com](http://cnoec.com)

### Basic Information

- Place of Origin: China
- Brand Name: CNOEC, OPTO-EDU
- Certification: CE,
- Model Number: A13.3601
- Minimum Order Quantity: 1 pc
- Price: FOB \$1~1000, Depend on Order Quantity
- Packaging Details: Carton Packing, For Export Transportation
- Delivery Time: 5~20 Days
- Payment Terms: T/T, West Union, Paypal
- Supply Ability: 5000 pcs/ Month



### Product Specification

- Optical System: Infinity Color Corrected Optical System
- Viewing Head: 30° Inclined, Interpupillary Distance: 54mm~75mm, Left Diopter  $\pm 5$  Adjustable
- Eyepiece: High Eye-point Wide Field Eyepiece WF10x/20mm
- Objective: Infinity Large Working Distance Plan Achromatic Metallurgical Objective
- Nosepiece: Inward Quadruple
- Working Stage: Double Layer Mechanical Stage
- Highlight: **OPTO EDU Binocular Metallurgical Microscope , Reflect Light Binocular Metallurgical Microscope , Reflect Light Digital Metallurgical Microscope**



### More Images



## Product Description

A13.3601 Metallurgical Microscope, Transmit & Reflect Light		-B	-T	Cata. No.
Optical System	Infinity Color Corrected Optical System	•	•	
Viewing Head	Gemel Binocular Head, 30° Inclined, Interpupillary Distance: 54mm~75mm, Left Diopter ±5 Adjustable	•		
	Gemel Trinocular Head, 30° Inclined, Interpupillary Distance: 54mm~75mm, Left Diopter ±5 Adjustable, Splitting Ratio R:T=50:50, With 0.5x Focusing C-mount		•	
Eyepiece	High Eye-point Wide Field Eyepiece WF10x/20mm	•	•	
Infinity Large Working Distance Plan Achromatic Metallurgical Objective	5x N.A. 0.15 W.D.12	•	•	A5D.3633-5
	10x N.A. 0.3 W.D.16	•	•	A5D.3633-10
Nosepiece	20x N.A. 0.4 W.D.12	•	•	A5D.3633-20
	50x N.A. 0.55 W.D.9.15	•	•	A5D.3633-50
	100x N.A. 0.8 W.D.2.1	○	○	A5D.3633-100
Frame	Inward Quadruple	•	•	
Working Stage	Transmitted & Reflected Frame With Glass Plate, Coaxial Focus System With Tension Adjustment And Up-limited Device, Coarse Range: 23mm, Fine Precision: 0.002mm.	•	•	
	Double Layer Mechanical Stage With X/Y Coaxial Adjustment, Size: 190mmX150mm, Moving Range: 76mmX50mm, Metal Plate For Transmitted Frame; Glass Plate For Transmitted & Reflected Frame.	•	•	
Reflected Illumination	Reflected Lamp-house With Single 5W LED, Warm White Color. Koehler Illuminator With Center Adjustable Field And Aperture Diaphragm. External Wide-range Adapter, Input Voltage 100V-240V AC50/60Hz, Output Voltage DC12V2A.	•	•	
Transmitted Illumination	Single 3W LED, White Color, With N.A.1.25 Abbe Condenser For Transmitted Light, With Center Preset Aperture Iris Diaphragm.	•	•	
Polarizing	Polariser And Analyzer. Analyzer Is Adjustable With 360° Rotation.	•	•	
C-Mount	0.35x, Focus Adjustable	○	○	A55.3623-35
	0.5x, Focus Adjustable	•	•	A55.3623-05
	1.0x, Focus Adjustable	○	○	A55.3623-10



OPTO-EDU (BEIJING) CO., LTD.

OPTO-EDU

F-1501 Wanda Plaza, No.18 Shijingshan Road, Beijing 100043, China  
Tel:+8610 88696020 Fax:+8610 88696085

## A13.3601

Metallurgical Microscope, Transmit & Reflect Light





A13.3601

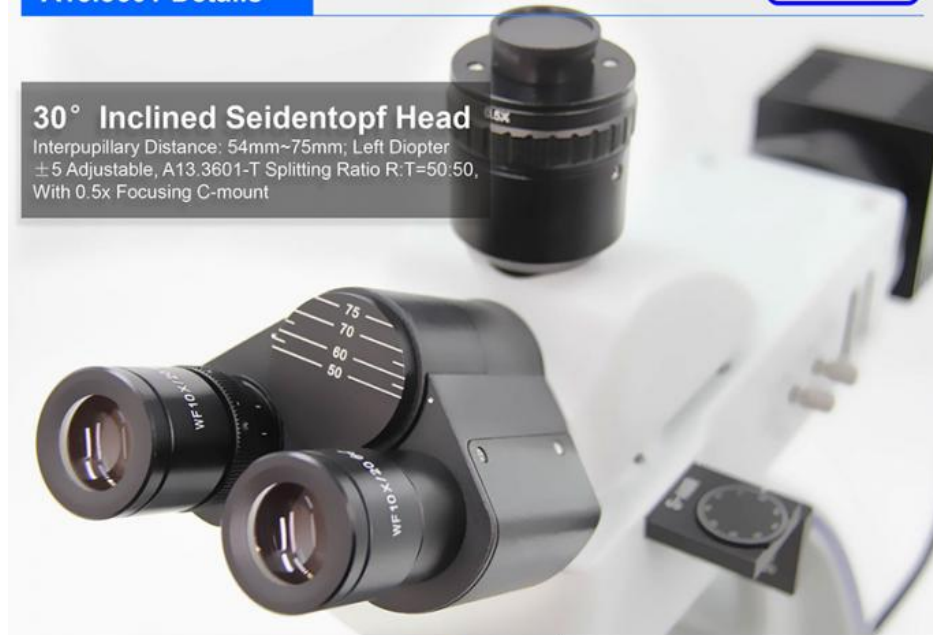
OPTO-EDU

## Metallurgical Microscope

The overall structural design is compact and not lacking in rigidity. The penetrating flanks on both sides of the frame, blue mounting posts, and curved mirror arms make the whole machine look agile. The hollowed-out design reduces weight while conforming to ergonomics, allowing it to be moved with one hand. The distance between binocular tubes can be adjusted by 50-75mm, and the diopter of one of the eyepiece tubes can be adjusted to suit different operators. The mechanical upper limit structure is adopted to ensure that the specimen will not collide with the objective lens and damage the specimen, and the metallographic microscope can be upgraded to meet the needs of modern biological teaching, basic medical care, and scientific research in different fields.

### 30° Inclined Seidentopf Head

Interpupillary Distance: 54mm~75mm; Left Diopter  
±5 Adjustable, A13.3601-T Splitting Ratio R:T=50:50,  
With 0.5x Focusing C-mount



Polarizer + Analyzer  
360° Rotate







### Double Layers Mechanical Stage

With X/Y Coaxial Adjustment, Size: 190mmX150mm, Moving Range: 76mmX50mm. Metal Plate For Transmitted Frame; Glass Plate For Transmitted & Reflected Frame.

### Condenser & Illumination

N.A. 1.25 Abbe Condenser And Iris Diaphragm; 3W LED Transmitted Illumination, Brightness Adjustable



**A13.3601 Packing**

**OPTO-EDU**



**A13.3601 Specification**

**OPTO-EDU**



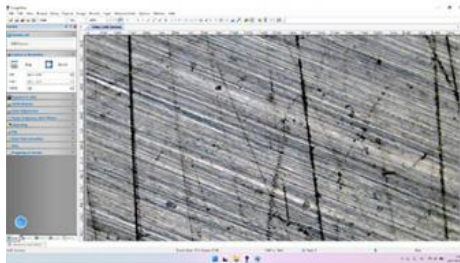
A13.3601-B Binocular



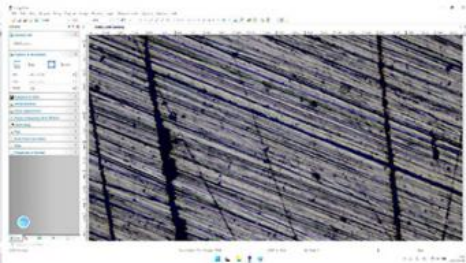
A13.3601-T Trinocular



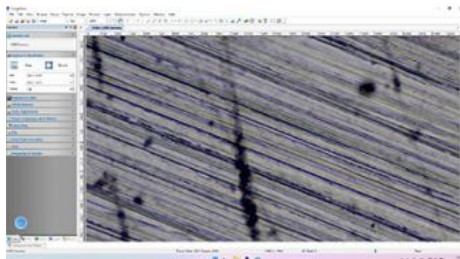




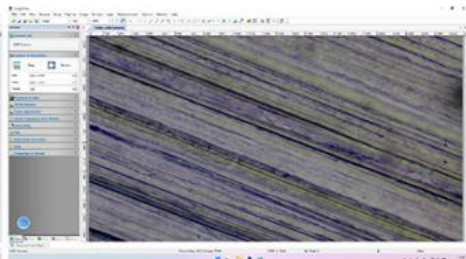
BF 5X



BF 10X



BF 20X



BF 50X



Opto-Edu (Beijing) Co., Ltd.

0086 13911110627

sale@optoedu.com

cnoec.com

F-1501 Wanda Plaza, No. 18 Shijingshan Road, Beijing 100043, China