



OPTO EDU A59.2205-B Usb 2.0 Cmos Microscope Eyepiece Camera

Our Product Introduction

Basic Information

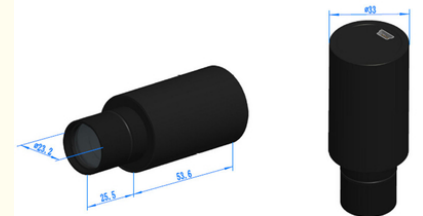
- Place of Origin: China
- Brand Name: CNOEC, OPTO-EDU
- Certification: CE, Rohs
- Model Number: A59.2205-B
- Minimum Order Quantity: 1 pc
- Price: FOB \$1~1000, Depend on Order Quantity
- Packaging Details: Carton Packing, For Export Transportation
- Delivery Time: 5~20 Days
- Payment Terms: T/T, West Union, Paypal
- Supply Ability: 5000 pcs/ Month

OPTO-EDU



Product Specification

- Applications: Microscope
- Certification: CE|Rohs
- Output: USB 2.0
- Product Name: Microscope Accessories
- Resolution: 5.0M Pixels
- Senser: CMOS
- Highlight: **Usb 2.0 Microscope Eyepiece Camera, Cmos Microscope Eyepiece Camera, Microscope Eyepiece Camera**



for more products please visit us on cnoec.com

More Images



Standard Packing List:
 A. Packing Box Specifications: L: 62cm W: 32cm H: 33cm (20Pcs, 12~17kg/Carton)
 For 20pcs in 1 in Above Figure
 B. Packing Box Specifications: L: 15cm W: 15cm H: 10cm (0.26 ~ 0.27kg / Per Small Box)
 C. A59.2205-B Camera
 D. High-Speed USB 2.0 A Male To B Male Mini Gold-Plated Head Data Cable / 2.0m
 E. CD / Driver And Application (Optional)

Optional Accessories:
 G. Dia.23.2mm to 35.0mm Ring (For 30mm Diameter Eyepiece Adapter Ring)
 H. Dia.22.2mm to 32.0mm Ring (For 26.0mm Diameter Eyepiece Adapter Ring)
 I. Dia.22.2mm to 31.75mm Ring (For the 31.75 Match Barrel Adapter Ring)
 J. Micrometer (PH-2) 21mm/100DIN, PH-3 21mm/100DIN, PH-4 21mm/100DIN, PH-5 10mm/100DIN, PH-6 10mm/100DIN



OPTO-EDU (BEIJING) CO., LTD.

OPTO-EDU

F-1501 Wanda Plaza, No.18 Shijingshan Road, Beijing 100043, China
Tel:+8610 88696020 Fax:+8610 88696085

A59.2205-B USB2.0 Aptina CMOS Digital Eyepiece Camera With Reduction Lens, 0.35M~5.1M



A59.2205-B Features & Sample Pictures

OPTO-EDU



- Microscope eyepiece Camera with 23.2 diameter and compact size;
- An extension of Touptek's SCMOS Camera with fixed reduction lens to ensure the full field of view of the microscope from the eyepiece can be imaged to the CMOS sensor;
- High-quality Camera with Aptina CMOS sensor;
- Auto white balance and auto-exposure; Brightness, contrast, chroma, and saturation can be adjusted;
- High-speed USB2.0 interface and high frame rate video display keep the screen smooth without interruption;
- With advanced video & image processing application TouptView;
- Windows/Linux/macOS/Android multiple platform SDK;

A59.2205-B USB2.0 CMOS Digital Eyepiece Camera, Reduction Lens

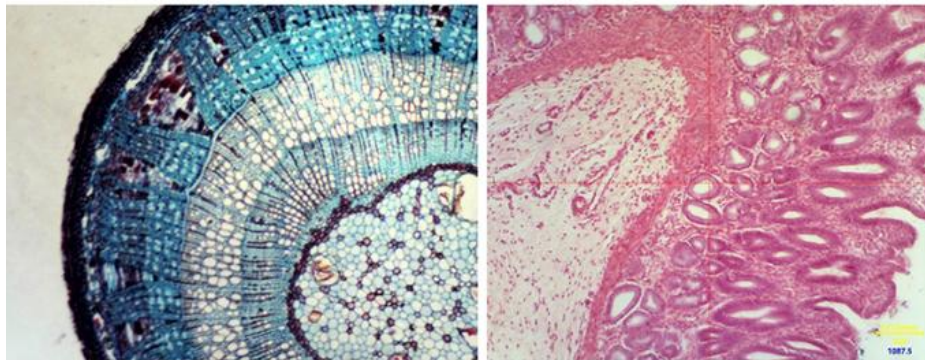
Touptek A59.2205-B is an extension of Touptek's A59.2205-B Camera with fixed reduction lens to increase the field of view from the microscope eyepiece tube. The A59.2205-B is still an economic version with simple and compact structure CMOS eyepiece camera. So here, the S means simple and compact, P means plus. USB2.0 is used as the data transfer interface.

The A59.2205-B eyepiece Camera comes with high-speed USB2.0 interface and high frame rate video display keep the screen smooth without interruption;

Also the A59.2205-B comes with advanced video & image processing application TouptView;

The A59.2205-B can be widely used to transfer the mono or binocular student microscopes to digital microscope.

With 23.2 to 30mm or 23.2 to 30.75 convert ring, the A59.2205-B Camera can also change the stereo microscope to digital stereo microscope.

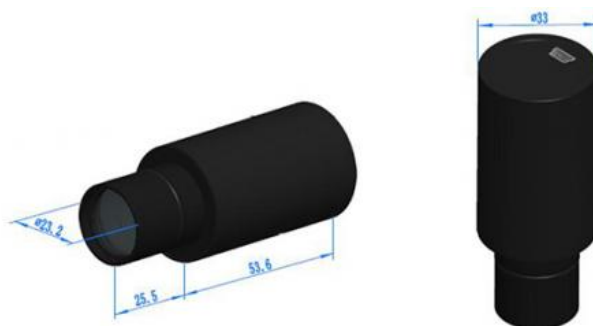


A59.2205-B Specification

OPTO-EDU

Order Code	Sensor & Size(mm)	Pixel(μm)	G Responsivity	Dynamic range	SNRmax	FPS/Resolution	Binning	Exposure
05100KPB	5.1M/IMX335© 1/2.8" (5.18x3.89)	2.0x2.0	505mV 70dB 43dB			26@2592x1944 26@1280x960 26@640x480	1x1 1x1 1x1	0.1-2000 ms

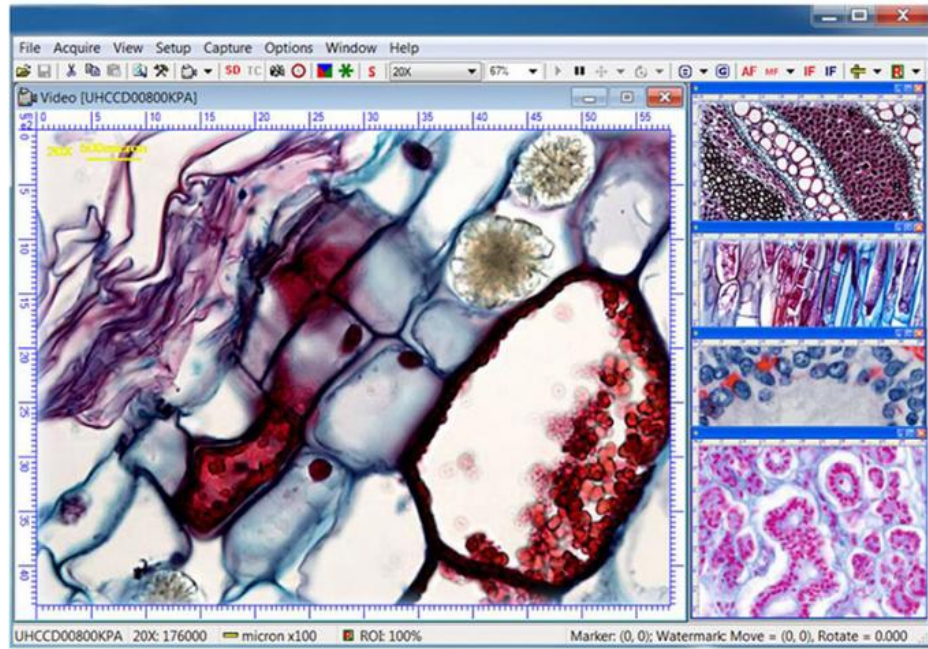
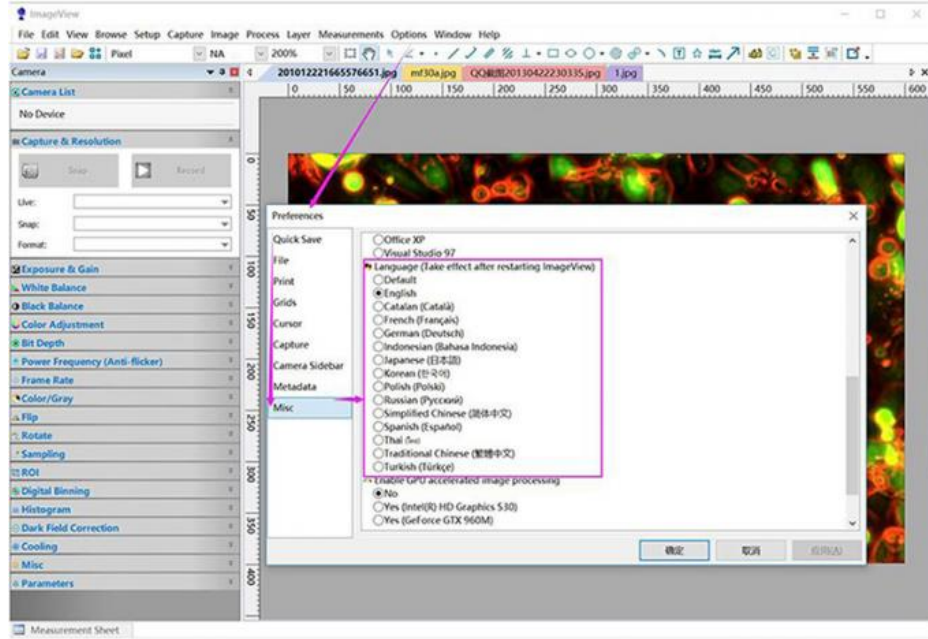
Other Specification	
Spectral Range	380-650nm (with IR-cut Filter)
White Balance	Auto White Balance
Color Technique	N/A
Capture/Control SDK	Windows/Linux/macOS/Android Multiple Platform SDK(Native C/C++, C#/VB.NET, Python, Java, DirectShow, Twain, etc)
Recording System	Still Picture and Movie
Data Format	MJPEG
Cooling System*	Natural
Operating Environment	
Operating Temperature(in Centidegree)	-10~ 50
Storage Temperature(in Centidegree)	-20~ 60
Operating Humidity	30~80%RH
Storage Humidity	10~60%RH
Power Supply	DC 5V over PC USB Port
Software Environment	
Operating System	Microsoft® Windows® XP / Vista / 7 / 8 /10 /11 (32 & 64 bit) OSx(Mac OS X) Linux
PC Requirements	CPU: Equal to Intel Core2 2.8GHz or Higher Memory:2GB or More USB Port:USB2.0 High-speed Port Display:17" or Larger CD-ROM

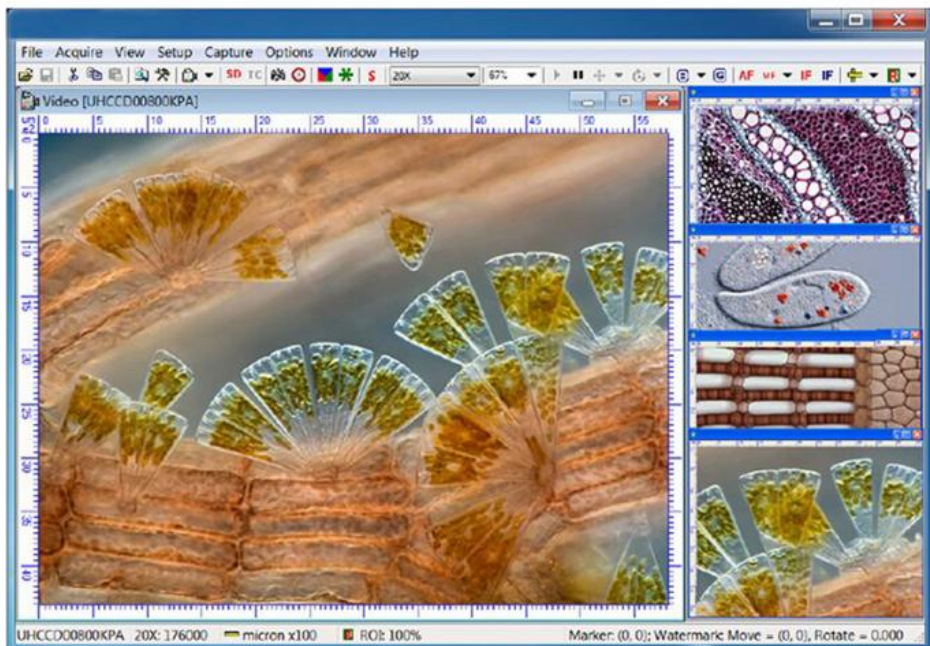
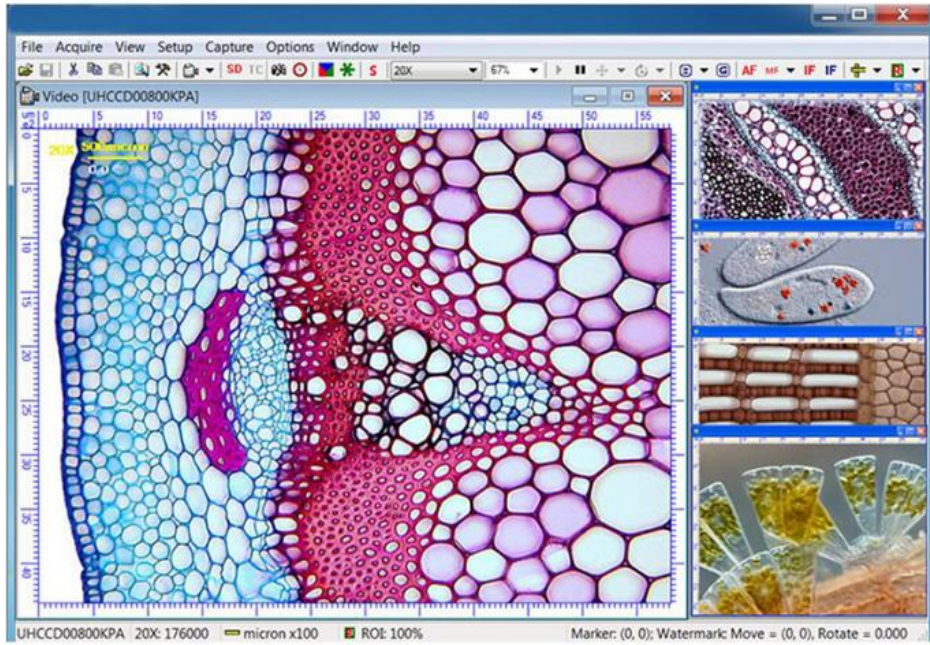


A59.2205-B Packing List



Standard Camera Packing List	
A	Carton L:52cm W:32cm H:33cm (20pcs, 12~17Kg/ carton), not shown in the photo
B	Gift box L:15cm W:15cm H:10cm (0.25~0.26Kg/ box)
C	One SPCMOS series eyepiece camera
D	High-Speed USB2.0 A male to mini B 5-pin male gold-plated connectors cable /1.5m
E	CD (Driver & utilities software, Ø8cm)
Optional Accessory	
F	108015(Dia.23.2mm to 30.0mm ring)/Adapter rings for 30mm eyepiece tube
G	108016(Dia.23.2mm to 30.5mm ring)/ Adapter rings for 30.5mm eyepiece tube
H	108017(Dia.23.2mm to 31.75mm Ring)/ Adapter rings for 31.75mm eyepiece tube
I	Calibration kit 106011/TS-M1(X=0.01mm/100Div.); 106012/TS-M2(X,Y=0.01mm/100Div.); 106013/TS-M7(X=0.01mm/100Div., 0.10mm/100Div.)





Camera Connect To Microscope

OPTO-EDU



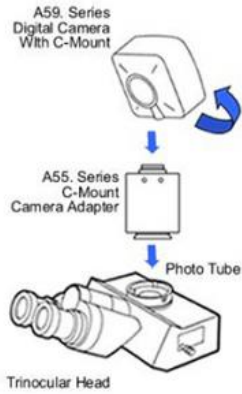
A55.2002
C-Mount to 23.2mm Adapter
For Microscope

A55.2004
C-Mount to 31.75mm Adapter
For Telescope

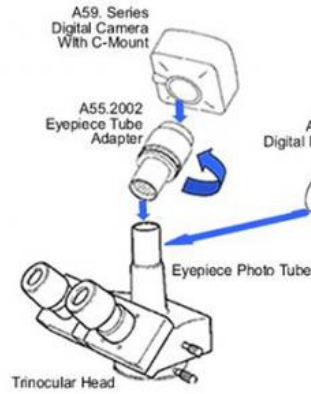
OPTO-EDU

How Camera Connect To Microscope

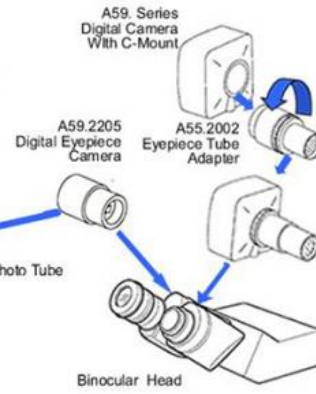
1. To Trinocular Microscope On Straight Photo Tube



2. To Trinocular Microscope On Eyepiece Photo Tube



3. To Binocular Microscope On Eyepiece Tube



Opto-Edu (Beijing) Co., Ltd.

☎ 0086 13911110627

✉ sale@optoedu.com

🌐 cnoec.com

F-1501 Wanda Plaza, No. 18 Shijingshan Road, Beijing 100043, China