



## A59.2240 Auto Focus HDMI+WIFI+SD Camera Mouse Measure OPTO-EDU

Our Product Introduction

for more products please visit us on [cnoec.com](http://cnoec.com)

### Basic Information

- Place of Origin: China
- Brand Name: CNOEC, OPTO-EDU
- Certification: CE, Rohs
- Model Number: A59.2240
- Minimum Order Quantity: 1 pc
- Price: FOB \$1~1000, Depend on Order Quantity
- Packaging Details: Carton Packing, For Export Transportation
- Delivery Time: 5~20 Days
- Payment Terms: T/T, West Union, Paypal
- Supply Ability: 5000 pcs/ Month

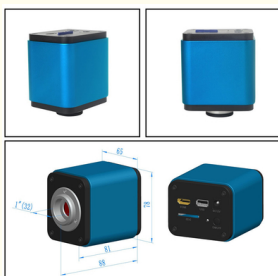


### Product Specification

- Applications: Microscope
- Certification: CE|Rohs
- Output: HDMI
- Product Name: Microscope Accessories
- Sensor: CMOS
- Compatible: Windows XP/Vista
- Highlight: **Mouse Measure HDMI+WIFI+SD Camera, OPTO-EDU HDMI+WIFI+SD Camera, A59.2240 HDMI+WIFI+SD Camera**



### More Images



## A59.2240 Auto Focus HDMI+WIFI+SD Camera, Mouse Measure

Auto Focus HDMI+WIFI+SD Card Digital Camera With Sony CMOS Sensors Resloution 1080p/5.0M  
Auto/Manual Focus With The Movement of The Sensor, Record 1080p Video ASF Format to SD Card  
HDMI/WIFI Output Simultaneously, With Built-in Mouse Control Panel For HDMI, Image View For WIFI  
Ultra-Fine TM Color Engine With Perfect Color Reproduction Capability (WIFI)  
Advanced Video & Image Processing Software Image View, Support SDK For Win/Linux/Mac/Android

OPTO-EDU



## A59.2240 Auto Focus HDMI+WIFI+SD Camera, Mouse Measure

A59.2240 is a multiple interfaces HDMI+WIFI+SD CMOS camera with autofocus function and it adopts ultra-high performance Sony CMOS sensor as the image-picking device. HDMI+WIFI are used as the data transfer interface to HDMI display or computer.

For HDMI output, the built-in software will be loaded and a camera control panel and toolbar are overlaid on the HDMI screen, in this case, the USB mouse can be used to set the camera, browse and compare the captured image, play the video ital.

In HDMI output, the camera embedded Auto/Manual focus function can obtain the clear image at ease. No hand rotation of the microscope Coarse/Fine knob is needed.

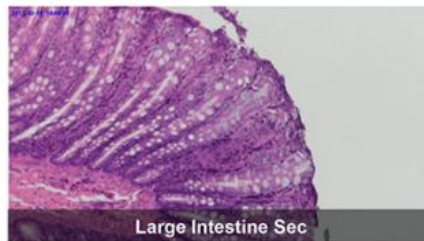
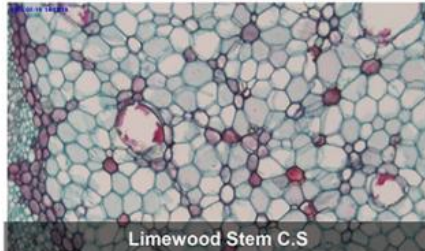
For WiFi output, unplug the mouse and plug in the USB WiFi adapter, connect the computer WiFi to the camera, then the video stream can be transfer to computer with the advanced software ToupView. With ToupView, you can control the camera, process the image as other USB series camera.



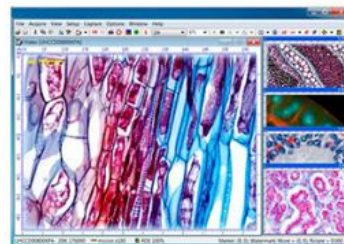
## A59.2240 Features & Sample Pictures



- Auto Focus HDMI+WIFI+SD Card Digital Camera With Sony CMOS Sensors Resloution 1080p/5.0M
- Auto/Manual Focus With The Movement of The Sensor, Record 1080p Video ASF Format to SD Card
- HDMI/WiFi Output Simultaneously, With Built-in Mouse Control Panel For HDMI, Image View For WIFI
- Ultra-Fine TM Color Engine With Perfect Color Reproduction Capability (WIFI)
- Advanced Video & Image Processing Software Image View, Support SDK For Win/Linux/Mac/Android



## A59.2240 Specification



Cata. No.	Sensor & Size(mm)	Pixel(μm)	G Sensitivity Dark Signal	FPS/Resolution	Binning	Exposure
5MPB	1080P/5M/ Sony IMX178(C) 1/1.8"(6.22x4.67)	2.4x2.4	425 mv with 1/30s 0.15 mv with 1/30s	30@1920x1080 (HDMI) 25@1920x1080 (WiFi)	1x1	0.03ms~918ms
2MPD	1080P/2M/ Sony IMX185(C) 1/1.9"(7.20x4.05)	3.75x3.75	1120 mv with 1/30s 0.15 mv with 1/30s	30@1920x1080 (HDMI) 25@1920x1080 (WiFi)	1x1	0.06ms~918ms
2ME (Stop)	1080P/2M/ Sony IMX249(C,GS) 1/1.2"(11.25x6.33)	5.86x5.86	1016 mv with 1/30s 0.15 mv with 1/30s	30@1920x1080 (HDMI) 25@1920x1080 (WiFi)	1x1	0.043ms~1000ms

Remark: C - Color, M-Monocolor, GS-GS Shutter

### INTERFACE & BUTTON FUNCTION

<b>USB</b>	USB Mouse, or USB WIFI
<b>HDMI</b>	HDMI Output, Mouse Control & Measure Function
<b>DC12V</b>	12V Power in
<b>SD</b>	SD Card Slot
<b>ON/OFF</b>	Power On/Off Switch
<b>LED</b>	Power On Indicator

#### HDMI OUTPUT

<b>UI Operation</b>	With USB Mouse
<b>Image Capture</b>	JPEG Format with 5M Resolution (2592*1944) in SD Card(8G) (5MP) JPEG Format with 2M Resolution in SD Card (2MP, 2ME) Global Shutter for 2ME
<b>Video Record</b>	ASF Format 1080P 30fps in SD Card
<b>Camera Control Panel</b>	Including Exposure, Gain, White Balance, Color Adjustment, Sharpness and Denoising Control
<b>Auto-focus Control Panel</b>	Including Auto-focus, Manual Focus, One Push AF and Conjugate Correction Functions
<b>Toolbar</b>	Including Zoom, Mirror, Comparison, Freeze, Cross, Browser Function

#### WIFI OUTPUT

<b>UI Operation</b>	Image View on Windows/Linux/OSX/Android Platform
<b>WiFi Performance</b>	802.11n 150Mbps; RF Power 20dBm(Maximum)
<b>Maximum Connected Devices</b>	3~6(According to the Environment and Connection Distance)
<b>White Balance</b>	Auto White Balance
<b>Color Technique</b>	Ultra-Fine Color Engine (WiFi)
<b>Capture/Control SDK</b>	Windows/Linux/macOS/Android Multiple Platform SDK(Native C/C++, C#/VB.NET, Python, Java, DirectShow, Twain, etc) (WiFi)
<b>Recording System</b>	Still Picture or Movie (WiFi)

#### SOFTWARE ENVIRONMENT FOR USB2.0

<b>Operating System</b>	Support Microsoft Windows XP / Vista / 7 / 8 / 10(32 & 64 bit) OS X (Mac OS X), Linux
<b>PC Requirements</b>	CPU: Equal to Intel Core2 2.8GHz or Higher Memory: 2GB or More USB port: USB2.0 High-speed Port Display: 17" or Larger CD-ROM

#### OPERATING ENVIRONMENT

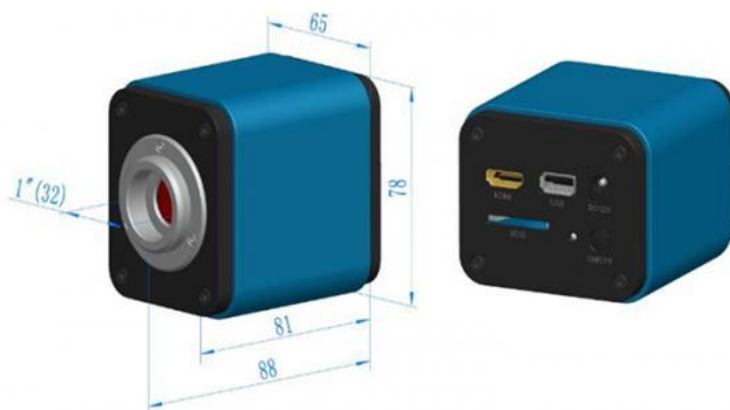
<b>Operating Temperature</b>	-10 °C~ 50 °C
<b>Storage Temperature</b>	-20 °C~ 60 °C
<b>Operating Humidity</b>	30~80%RH
<b>Storage Humidity</b>	10~60%RH
<b>Power Supply</b>	DC 12V/2A Adaptor

#### Dimension of A59.2240 Series Camera

**A59.2240** Auto-focus HDMI WiFi CMOS camera body, made from tough, aluminium alloy, ensures a heavy duty, workhorse solution. The camera is designed with a high quality IR-CUT to protect the camera sensor. No moving parts included. These measures ensure a rugged, robust solution with an increased lifespan when compared to other industrial camera solutions

**Dimension** 78 mm (3.07") x 70 mm (2.76") x 92mm (3.62")

**Shipping Weight** 0.47 kg (1.0lbs)



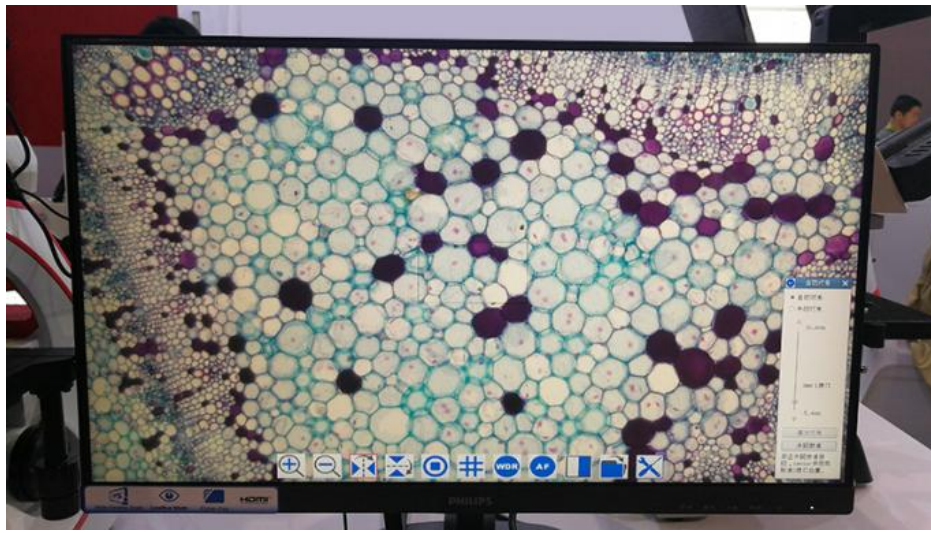
## A59.2240 Packing List



Packing List of A59.2240 Series Camera			
Standard Outfit			
A	Gift box : L:25.5cm W:17.0cm H:19.0cm (1pcs, 1.55Kg/ box)		
B	Digital camera		
C	Power Adaptor: Input: AC 100~240V 50Hz/60Hz, Output: DC 12V 1A <b>American standard:</b> Model: GS12U12-P11 12W/12V/1A: UL/CUL/BSMI/CB/FCC EMI Standard:EN55022,EN61204-3, EN61000-3-2,-3, FCC Part 152 class B, BSMI CNS14338 <b>EMS Standard:</b> EN61000-4-2,3,4,5,6,8,11,EN61204-3,Class A Light Industry Standard <b>European standard:</b> Model:GS12E12-P11 12W/12V/1A TUV(GS)/CB/CE/ROHS EMI Standard:EN55022,EN61204-3, EN61000-3-2,-3, FCC Part 152 class B, BSMI CNS14338 <b>EMS Standard:</b> EN61000-4-2,3,4,5,6,8,11,EN61204-3,Class A Light Industry Standard		
D	HDMI Cable		
E	USB Mouse		
F	Wireless network adapter with USB interface		
G	CD (Driver & utilities software, Ø12cm)		
Optional Accessory			
H	Focus <b>Adjustable</b> Eyepiece Adapter	For 0.37x, C-Mount to Dia.23.2mm	A55.2202-A37
		Microscope For 0.50x, C-Mount to Dia.23.2mm	A55.2202-A50
		0.75x, C-Mount to Dia.23.2mm	A55.2202-A75
		For 0.37x, C-Mount to Dia.31.75mm	A55.2204-A37
		Telescope For 0.50x, C-Mount to Dia.31.75mm	A55.2204-A50
		0.75x, C-Mount to Dia.31.75mm	A55.2204-A75
I	Focus <b>Fixed</b> Eyepiece Adapter	For 0.37x, C-Mount to Dia.23.2mm	A55.2202-F37
		Microscope For 0.50x, C-Mount to Dia.23.2mm	A55.2202-F50
		0.75x, C-Mount to Dia.23.2mm	A55.2202-F75
		For 0.37x, C-Mount to Dia.31.75mm	A55.2204-F37
		Telescope For 0.50x, C-Mount to Dia.31.75mm	A55.2204-F50
		0.75x, C-Mount to Dia.31.75mm	A55.2204-F75
J	Adaptor Rings Dia.23.2mm to 30.0mm For 30.0mm Microscope Eyepiece Tube	A55.2203-30	
K	Adaptor Rings Dia.23.2mm to 30.5mm For 30.5mm Microscope Eyepiece Tube	A55.2203-30.5	
L	Calibration Stage Micrometer	X=0.01mm/100Div.	
		X,Y=0.01mm/100Div	
M	SD Card(4G or 8G)	X=0.01mm/100Div., 0.10mm/100Div	

[More Pictures](#)

**OPTO-EDU**



**Opto-Edu (Beijing) Co., Ltd.**

☎ 0086 13911110627

✉ [sale@optoedu.com](mailto:sale@optoedu.com)

🌐 [cnoec.com](http://cnoec.com)

F-1501 Wanda Plaza, No. 18 Shijingshan Road, Beijing 100043, China