



OPTO-EDU A59.2251 WIFI+USB2.0 Digital Microscope Camera

Our Product Introduction

for more products please visit us on cnoec.com

Basic Information

- Place of Origin: China
- Brand Name: CNOEC, OPTO-EDU
- Certification: CE, Rohs
- Model Number: A59.2251
- Minimum Order Quantity: 1 pc
- Price: FOB \$1~1000, Depend on Order Quantity
- Packaging Details: Carton Packing, For Export Transportation
- Delivery Time: 5~20 Days
- Payment Terms: T/T, West Union, Paypal
- Supply Ability: 5000 pcs/ Month

OPTO-EDU



Product Specification

- Applications: Microscope
- Certification: CE|Rohs
- USB Mouse: USB2.0
- SD: SD Card Slot
- LED: Power On Indicator
- ON/OFF: Power On/Off Switch
- Highlight: **OPTO-EDU Digital Microscope Camera, WIFI USB2.0 Digital Microscope Camera, WIFI USB Digital Microscope Camera**



More Images





OPTO-EDU (BEIJING) CO., LTD.

F-1501 Wanda Plaza, No.18 Shijingshan Road, Beijing 100043, China
Tel:+8610 88696020 Fax:+8610 88696085



A59.2251

WIFI+USB2.0 Digital Camera



A59.2251 Features




A59.2251

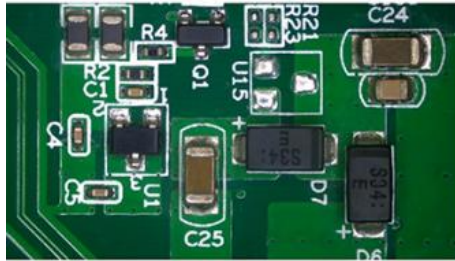
WIFI+USB2.0 Digital Camera

The WEUCAM series cameras can be connected to smart devices or computers through USB/LAN/WiFi. It can be used for video and image acquisition of stereo microscope or biomicroscope, and can also be used for interactive microscope teaching system, which is convenient for teachers to teach and students to learn.

- ◆ Sony Exmor back illuminated large-sized CMOS sensor with lower noise and better photosensitive characteristics
- ◆ USB/LAN/WiFi multiple video outputs, WiFi adopts 802.11AC chip, with higher transmission bandwidth
- ◆ Powerful ISP functions, real-time video transmission can reach up to 30fps/4M
- ◆ ToupView/ToupLite software for PC, fully applicable for biological and stereological observations
- ◆ iOS/Android app for smart phones or tablets

Order Code	Sensor & Size(mm)	Pixel(μm)	G Sensitivity	Dark Signal	FPS/Resolution	Binning	Exposure (ms)
------------	-------------------	-----------	---------------	-------------	----------------	---------	---------------

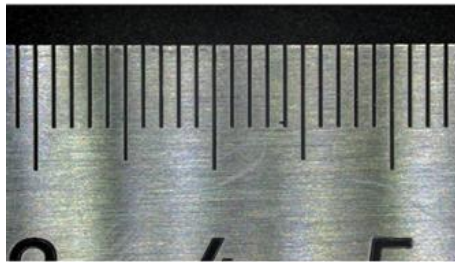
4MPA	4M/Sony IMX347@ 1/1.8"(7.8x4.38)	2.9x2.9	921mv with 1/30s 0.15mv with 1/30s	30@2688*1512(US B) 30@2688*1512(NE TWORK)	1x1	0.021ms~1000ms
------	-------------------------------------	---------	---------------------------------------	--	-----	----------------



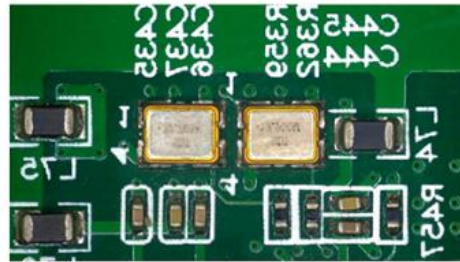
PCB 1



Printing



Steel Ruler



PCB 2

A59.2251 Specification

OPTO-EDU



Interface	Function Description
LAN	100M Ethernet port to connect to the router or computer to transfer video. Video can be transmitted via LAN or WiFi. LAN and WiFi cannot be used at the same time. The priority of LAN connection is higher than WiFi.
USB	Connect the Micro USB 5V/1A power supply to power the camera, at this time the Camera provides LAN or WiFi connection mode. Connect the Micro USB cable to the USB port of the computer to achieve video image output.
AP/STA Switch Button	Press to switch between AP and STA mode. Connecting 2~3 clients for a single Camera is recommended
Video Output Interface	Function Description
LAN Interface	30fps@2688*1512 H264 encoded video and Jpeg image capture.
USB Interface	Connect to PC via Micro USB cable to transfer MJPEG/H264 real-time images, support 30fps@2688*1512 and 30fps@1920*1080.
WiFi Interface	Support 802.11ac protocols in AP/STA mode; 30fps@2688*1512 H264 encoded video and Jpeg image capture.
Software Environment under LAN/WLAN/Output	
White Balance	Auto, Manual and ROI White Balance
Color Technique	Ultra-Fine Color Engine
ISP	Exposure(Automatic/Manual Exposure)/ Gain, White Balance(Auto, Manual and ROI White Balance), Sharpening, 3D Denoise, Saturation Adjustment, Contrast Adjustment, Brightness Adjustment, Gamma Adjustment,50HZ/60HZ Anti-flicker, Mirror/Flip, color to grey, Network Bandwidth Adjustment
Capture/Control SDK	Windows/Linux/macOS/Android Multiple Platform SDK(Native C/C++, C#/VB.NET, Python, Java, DirectShow, Twain, etc)
Recording System	Still Picture or Movie
Operating System	Microsoft® Windows® XP / Vista / 7 / 8 / 8.1 / 10 / 11(32 & 64 bit) OSx(Mac OS X) Linux
PC Requirements	CPU: Equal to Intel Core2 2.8GHz or Higher Memory: 4GB or More Ethernet RJ45 Interface: 100M bps or more WiFi Adaptor: Support 802.11 b/g/n/ac Display:19" or Larger CD-ROM

Operating Environment	
Operating Temperature (in Centidegree)	-10°~ 50°
Storage Temperature (in Centidegree)	-20°~ 60°
Operating Humidity	30~80%RH
Storage Humidity	10~60%RH
Power Supply	Micro USB DC 5V/1A Adapter
Camera Size	
Length x Width x Height	50 mm x 50mm x 112mm
Shipping Weight	0.19 kg

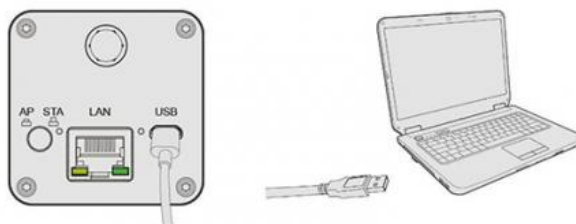
A59.2251 Packing List

OPTO-EDU



Standard Packing List		
A	Gift box : L:15cm W:15cm H:10cm (1pcs, 0.5kg/ box)	
B	One WEUCAM series camera	
C	Power Adapter: Input: AC 100~240V 50Hz/60Hz, Output: DC 5V 1A American standard: Model: POWER-U-5V1A(SK12G-0500100U): UL/CE/FCC European standard: Model: POWER-E-5V1A(SK12G-0500100V): UL/CE/FCC	
D	Micro USB cable 1.5 meters	
E	CD (Driver & utilities software, Ø12cm)	
Optional Accessory		
F	Ethernet cable	
G	Adjustable lens adapter	C-Mount to Dia.23.2mm eyepiece tube (Please choose 1 of them for your microscope) 108001/AMA037 108002/AMA050 108003/AMA075
H	Fixed lens adapter	C-Mount to Dia.23.2mm eyepiece tube (Please choose 1 of them for your microscope) 108005/FMA037 108006/FMA050 108007/FMA075
Note: For G and H optional items, please specify your Camera type(C-mount, microscope Camera or telescope camera), Touptek engineer will help you to determine the right microscope or telescope camera adapter for your application;		
I	108015(Dia.23.2mm to 30.0mm ring)/Adapter rings for 30mm eyepiece tube	
J	108016(Dia.23.2mm to 30.5mm ring)/ Adapter rings for 30.5mm eyepiece tube	
K	Calibration kit	106011/TS-M1(X=0.01mm/100Div.); 106012/TS-M2(X,Y=0.01mm/100Div.); 106013/TS-M7(X=0.01mm/100Div., 0.10mm/100Div.)

1. A59.2251 series camera is used by connecting it to a computer via a Micro USB cable



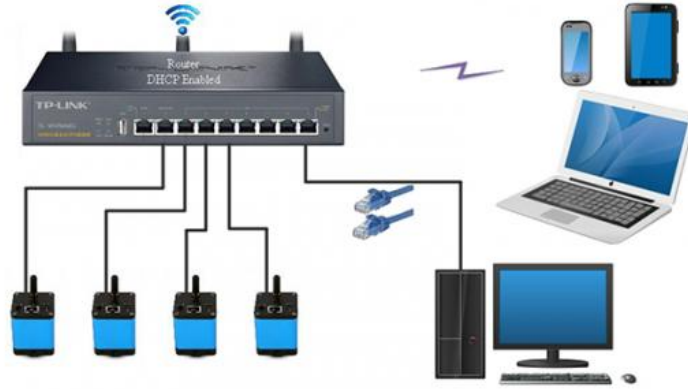
2. A59.2251 Camera working in WiFi AP mode



3. Connecting multi-cameras to the router with WiFi STA mode for the network application



4. Connecting multi-cameras to the router through the LAN port for the network application



5. Connecting multi-cameras to the router through the LAN port/WiFi STA mode for the network application



Camera Connect To Microscope



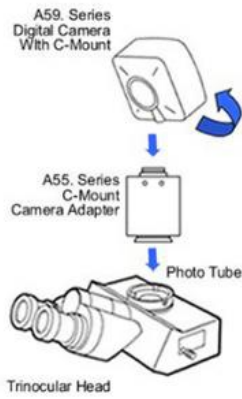
A55.2002
C-Mount to 23.2mm Adapter
For Microscope

A55.2004
C-Mount to 31.75mm Adapter
For Telescope

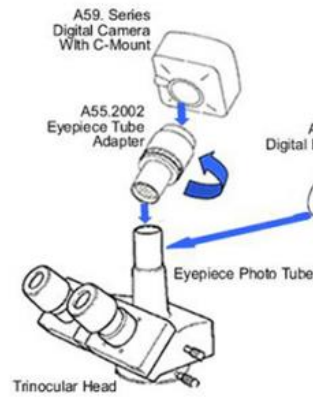
OPTO-EDU

How Camera Connect To Microscope

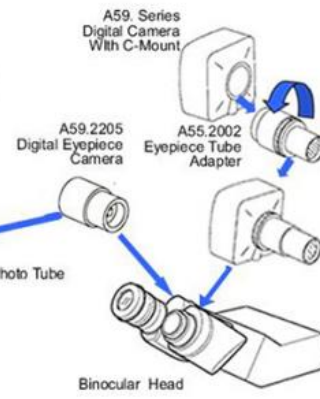
1. To Trinocular Microscope On Straight Photo Tube



2. To Trinocular Microscope On Eyepiece Photo Tube



3. To Binocular Microscope On Eyepiece Tube



Opto-Edu (Beijing) Co., Ltd.

☎ 0086 13911110627

✉ sale@optoedu.com

🌐 cnoec.com

F-1501 Wanda Plaza, No. 18 Shijingshan Road, Beijing 100043, China