



OPTO EDU A59.2241 4K 8.0M HDMI+USB+SD Digital Camera For Microscope

Our Product Introduction

Basic Information

- Place of Origin: China
- Brand Name: CNOEC, OPTO-EDU
- Certification: CE, Rohs
- Model Number: A59.2241
- Minimum Order Quantity: 1 pc
- Price: FOB \$1~1000, Depend on Order Quantity
- Packaging Details: Carton Packing, For Export Transportation
- Delivery Time: 5~20 Days
- Payment Terms: T/T, West Union, Paypal
- Supply Ability: 5000 pcs/ Month

OPTO-EDU



Product Specification

- Applications: Microscope
- Certification: CE|Rohs
- Output: HDMI
- Product Name: Microscope Accessories
- Sensor: CMOS
- Compatible: Windows XP/Vista
- Highlight: **8.0M Digital Camera For Microscope, 4K Digital Camera For Microscope, USB Digital Camera For Microscope**



for more products please visit us on cnoec.com



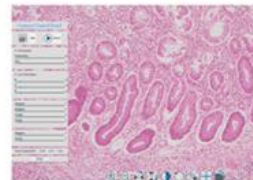
OPTO-EDU (BEIJING) CO., LTD.

OPTO-EDU

F-1501 Wanda Plaza, No.18 Shijingshan Road, Beijing 100043, China
Tel:+8610 88696020 Fax:+8610 88696085

Our Product Introduction

A59.2241 4K HDMI+USB+SD Digital Camera, Mouse Measure



for more products please visit us on cnoec.com



A59.2241 4K HDMI+USB+SD Digital Camera, Mouse Measure

A59.2241 camera is the next-generation live-view imaging-system with 4K resolution(Video) at 30 FPS. It comes with Sony Exmor CMOS sensor with high sensitivity, low dark current and no smear achieved through the adoption of R, G and B primary color mosaic filters.

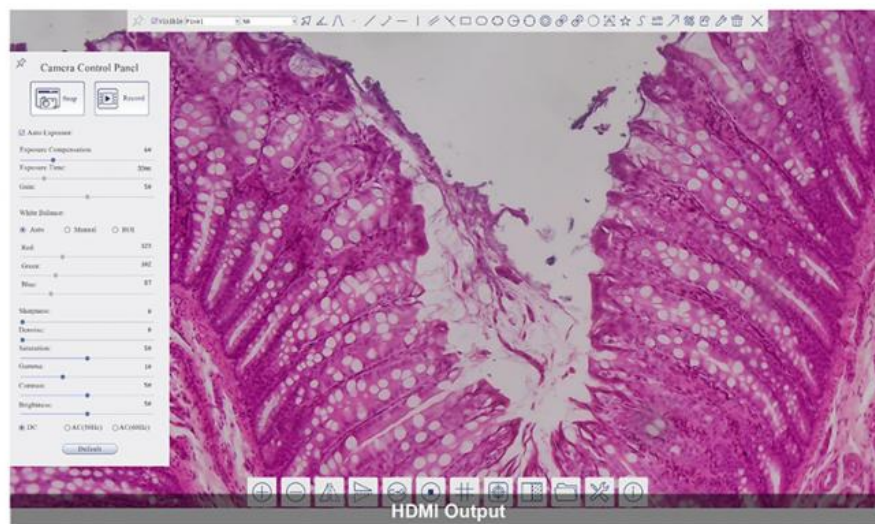
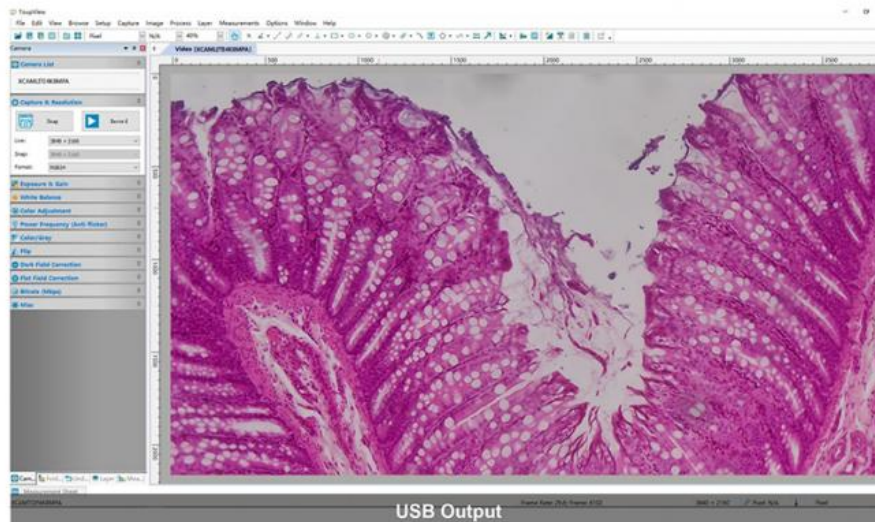
The camera uses a standard C-mount interface for maximum compatibility with various microscopy-systems. It can be used as a stand-alone recorder when used with an HDMI monitor or television, or live-streamed to a PC via USB for image-capture and video-recording.

Hardware 3D denoising, sharpness and tone mapping control functions greatly improve the image and video quality.

The included Windows software offers image-development and measurement tools, as well as advanced compositing features such as image-stitching and extended-depth-of-focus. With the ability to calibrate scales at multiple magnifications, the software can be used for multi-level inspection. For Mac and Linux, there is a lite version of the software which can capture video and still images, and includes limited processing features.

A59.2241 4K series camera is intended to be used for the acquisition of digital images from the stereo microscope, biological microscope or online interactive teaching.

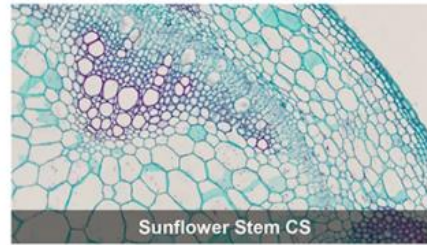
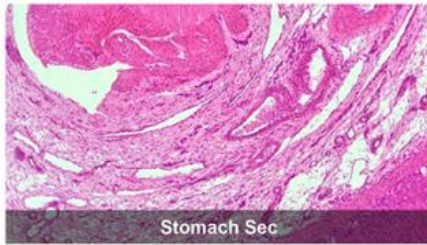
A59.2241 Connections Image



A59.2241 Features & Sample Pictures



- 4K HDMI+USB+SD Card Digital Camera With Sony Exmor CMOS Sensors Resloution 8.0M
- 4K/1080P Auto Switch According to Display Resolution, Save Image & Record Video to SD Card
- Built-in HDMI Mouse Control Panel For Image Capture & Video Record To SD Card
- Built-in Toolbar Including Zoom, Mirror, Comparison, Freeze, Cross, Browser Functions
- Advanced Video & Image Processing Software Image View, Support SDK For Win/Linux/Mac/Android



A59.2241 Specification



Order Code	Sensor & Size(mm)	Pixel(μm)	G Sensitivity	FPS/Resolution	Binning	Exposure(ms)
4K8MPA	Sony IMX334© 1/1.8"(7.68x4.32)	2.0x2.0	505mv with 1/30s 0.1mv with 1/30s	30@3840*2160(HDMI) 20@3840*2160(USB)	1x1	0.04~1000
4K8MPB	Sony IMX485(C) 1/1.2"(11.14x6.26)	2.9x2.9	2188mv with 1/30s 0.39mv with 1/30s	30@3840*2160(HDMI) 20@3840*2160(USB)	1x1	0.04~1000
4K8MPC	Sony IMX678© 1/1.8"(7.68x4.32)	2.0x2.0	1364mv with 1/30s 0.15mv with 1/30s	30@3840*2160(HDMI) 20@3840*2160(USB)	1x1	0.04~1000
4K8MPD	Sony IMX585© 1/1.2"(11.14x6.26)	2.9x2.9	1028mv with 1/30s 0.13mv with 1/30s	30@3840*2160(HDMI) 20@3840*2160(USB)	1x1	0.04~1000



A59.2241 Size: mm

Interface	Function Description
USB Mouse	Connect USB mouse for easy operation with embedded XCamView software;
USB Video	Connect PC or other host device to realize video image transmission;
HDMI	Comply with HDMI1.4 standard. 4K or 1080P format video output for standard displayer;
DC12V	Power adapter connection (12V/1A);
SD	Comply with SDIO3.0 standard and SD card could be inserted for video and images storage;
USB	Connect USB flash drive for capturing video and image storage

LED	LED status indicator;
ON/OFF	Power switch;
Video Output Interface	Function Description
HDMI Interface	Comply with HDMI1.4 standard; 30fps@4K or 30fps@1080P;
USB Video Interface	Connecting USB port of PC for video transfer ; MJPEG format video;
Other Function	Function Description
Video Saving	Video format:8M(3840*2160) H264/H265 encoded MP4 file; Video saving frame rate:30fps;
Image Capture	8M (3840*2160) JPEG/TIFF image in SD card ;
Measurement Saving	Measurement information saved in layer mode with image content; Measurement information is saved together with image content in burn in mode.
ISP Function	Exposure(Automatic / Manual Exposure) / Gain, White Balance(Manual / Automatic / ROI Mode), Sharpening, 3D Denoise, Saturation Adjustment, Contrast Adjustment, Brightness Adjustment, Gamma Adjustment, Color to Gray, 50HZ/60HZ Anti-flicker Function
Image Operations	Zoom In/Zoom Out, Mirror/Flip, Freeze, Cross Line, Overlay, Embedded Files Browser, Video Playback, Measurement Function
Embedded RTC(Optional)	To support accurate time on board
Restore Factory Settings	Restore Camera parameters to its factory status
Multiple Language Support	English / Simplified Chinese / Traditional Chinese / Korean / Thai / French / German / Japanese / Italian

SOFTWARE ENVIRONMENT UNDER LAN/WLAN/USB VIDEO OUTPUT	
White Balance	Auto White Balance
Color Technique	Ultra-Fine Color Engine
Capture/Control SDK	Win/Linux/macOS/Android Multiple Platform SDK(Native C/C++, C#/VB.NET, Python, Java, DirectShow, Twain, etc)
Recording System	Still Picture or Movie
Operating System	Microsoft® Windows® XP, Vista, 7, 8, 8.1 /10 /11(32 & 64 bit) OSx(Mac OS X) Linux
PC Requirements	CPU: Equal to Intel Core2 2.8GHz or Higher Memory: 4GB or More Display:19" or Larger CD-ROM
OPERATING ENVIRONMENT	
Operating Temperature	-10 °C~ 50 °C
Storage Temperature	-20 °C~ 60 °C
Operating Humidity	30~80%RH
Storage Humidity	10~60%RH
Power Supply	DC 12V/2A Adaptor
Dimension of A59.2241 Series Camera	
A59.2241 camera body, made from tough, CNC aluminium alloy, ensures a heavy duty, workhorse solution. The camera is designed with a high quality IR-CUT to protect the camera sensor. No moving parts included. This design ensures a rugged, robust solution with an increased lifespan when compared to other industrial camera solutions.	

A59.2241 Packing List



Packing List of A59.2241 Series Camera	
Standard Outfit	
A	Gift box : L:25.5cm W:17.0cm H:9.0cm (1pcs, 1.48Kg/ box)
B	Digital camera
C	Power Adaptor: Input: AC 100~240V 50Hz/60Hz, Output: DC 12V 1A American standard: Model: GS12U12-P11 12W/12V/1A: UL/CUL/BSMI/CB/FCC EMI Standard:EN55022,EN61204-3, EN61000-3-2,-3, FCC Part 152 class B, BSMI CNS14338 EMS Standard:EN61000-4-2,3,4,5,6,8,11,EN61204-3,Class A Light Industry Standard

	European standard: Model:GS12E12-P11 12W/12V/1A TUV(GS)/CB/CE/ROHS			
	EMI Standard:EN55022,EN61204-3, EN61000-3-2,-3, FCC Part 152 class B, BSMI CNS14338			
	EMS Standard:EN61000-4-2,3,4,5,6,8,11,EN61204-3,Class A Light Industry Standard			
D	USB Mouse			
E	HDMI Cable			
F	USB2.0 A male to A male gold-plated connectors cable /2.0m			
G	CD (Driver & utilities software, Ø12cm)			
Optional Accessory				
H	SD Card(16G or above; Speed: class 10)			
I	Focus Adjustable Eyepiece Adapter	For Microscope	0.37x, C-Mount to Dia.23.2mm	A55.2202-A37
			0.50x, C-Mount to Dia.23.2mm	A55.2202-A50
			0.75x, C-Mount to Dia.23.2mm	A55.2202-A75
		For Telescope	0.37x, C-Mount to Dia.31.75mm	A55.2204-A37
			0.50x, C-Mount to Dia.31.75mm	A55.2204-A50
			0.75x, C-Mount to Dia.31.75mm	A55.2204-A75
J	Focus Fixed Eyepiece Adapter	For Microscope	0.37x, C-Mount to Dia.23.2mm	A55.2202-F37
			0.50x, C-Mount to Dia.23.2mm	A55.2202-F50
			0.75x, C-Mount to Dia.23.2mm	A55.2202-F75
		For Telescope	0.37x, C-Mount to Dia.31.75mm	A55.2204-F37
			0.50x, C-Mount to Dia.31.75mm	A55.2204-F50
			0.75x, C-Mount to Dia.31.75mm	A55.2204-F75
K	Adaptor Rings Dia.23.2mm to 30.0mm For 30.0mm Microscope Eyepiece Tube		A55.2203-30	
L	Adaptor Rings Dia.23.2mm to 30.5mm For 30.5mm Microscope Eyepiece Tube		A55.2203-30.5	
M	Calibration Stage Micrometer	X=0.01mm/100Div.		
		X,Y=0.01mm/100Div		
		X=0.01mm/100Div., 0.10mm/100Div		

Camera Connect To Microscope



A55.2002
C-Mount to 23.2mm Adapter
For Microscope

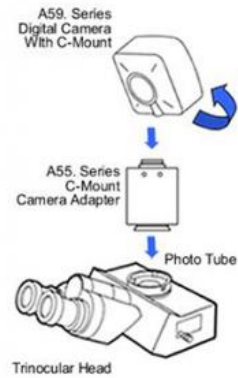


A55.2004
C-Mount to 31.75mm Adapter
For Telescope

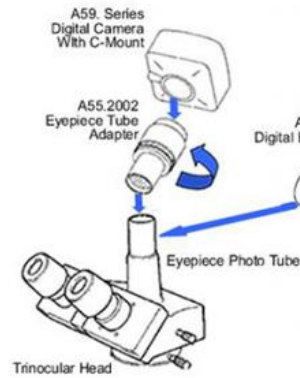
OPTO-EDU

How Camera Connect To Microscope

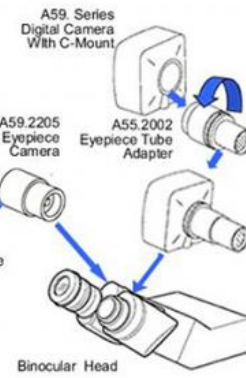
1. To Trinocular Microscope On Straight Photo Tube



2. To Trinocular Microscope On Eyepiece Photo Tube



3. To Binocular Microscope On Eyepiece Tube



Opto-Edu (Beijing) Co., Ltd.

☎ 0086 13911110627

✉ sale@optoedu.com

🌐 cnoec.com

F-1501 Wanda Plaza, No. 18 Shijingshan Road, Beijing 100043, China