



OPTO-EDU A59.5104 2.4G WIFI+USB Digital Camera, 2.0M, 25Fps, Win, Android, iOS

Our Product Introduction

for more products please visit us on cnoec.com

Basic Information

- Place of Origin: China
- Brand Name: CNOEC, OPTO-EDU
- Certification: CE, Rohs
- Model Number: A59.5104
- Minimum Order Quantity: 1 pc
- Price: FOB \$1~1000, Depend on Order Quantity
- Packaging Details: Carton Packing, For Export Transportation
- Delivery Time: 5~20 Days
- Payment Terms: T/T, West Union, Paypal
- Supply Ability: 5000 pcs/ Month

OPTO-EDU



Product Specification

- Resolution: 2.0M
- FPS: 25fps@1920*1080
- Sensor: 1/3" CMOS
- Output: 2.4G WIFI, T Cam App For Andorid/iOS
- Battery: Built-in Rechargeable Battery, Word For 2-5 Hours
- Interface: Dia.23.2mm For Microscope Eyepiece Tube

OPTO-EDU



More Images

OPTO-EDU



Product Description

2.0M, 1920*1080@25fps, 1/3" CMOS, 2.4G WIFI+USB2.0
WIFI T Cam App For IOS, Andorid, Type C UVC To PC With Software StrangeView
Eyepiece Dia.23.2mm, Adapter Ring For Telescope Dia.0.965", 1.25"
With 0.3x Reduction Lens, Wlth Filter 715-1100nmT<1%,400-635nmT>93%
Built-in Rechargeable Batteries Work For 2-5 Hours

A59.5104 T Cams & StrangeView Download

OPTO-EDU

iOS

Android

Google Play

PC Win11



OPTO-EDU (BEIJING) CO., LTD.

OPTO-EDU

F-1501 Wanda Plaza, No.18 Shijingshan Road, Beijing 100043, China
Tel:+8610 88696020 Fax:+8610 88696085

A59.5104 WIFI +USB2.0 Digital Eyepiece



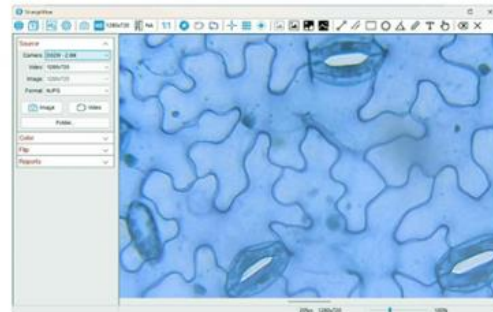
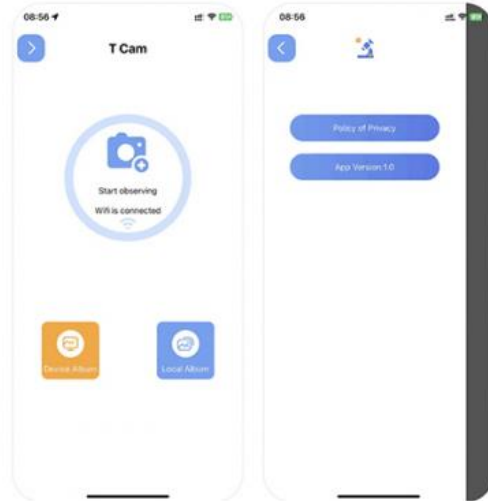
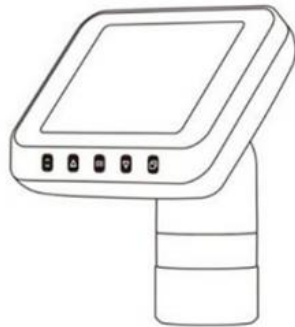
Our Product Introduction

for more products please visit us on cnoec.com



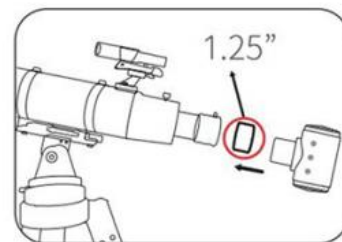
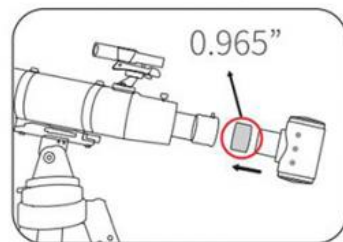
A59.4104 WIFI +USB2.0 Digital Eyepiece	
Resolution	2.0M
FPS	25fps@1920*1080
Sensor	1/3" CMOS
Output	2.4G WIFI, T Cam App For Andorid/iOS
Battery	USB2.0, Type C Cable To Laptop, Strangeview Software For Win 11
Interface	Built-in Rechargeable Battery, Word For 2-5 Hours
	Dia.23.2mm For Microscope Eyepiece Tube
	Adapter Ring Dia.0.965", Dia.1.25" For Telescope
	Adapter Ring Dia.30.0mm For Microscope Eyepiece Tube (Optional)
Optical Lens	0.3x Reduction Lens
Optical Filter	715~1100nm T<1%, 400~635nm T>93%



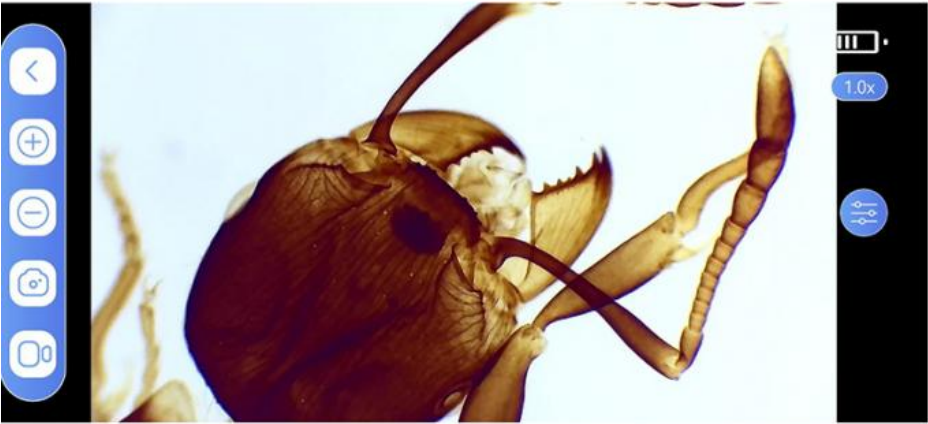
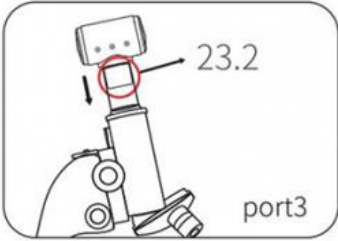




Astronomical Telescope Interface Diagram



Biological Microscope Interface Diagram



Stereo Microscope Interface Diagram



Adapter Ring Dia.30mm (Optional)



Opto-Edu (Beijing) Co., Ltd.

☎ 0086 13911110627

✉ sale@optoedu.com

🌐 cnoec.com

F-1501 Wanda Plaza, No. 18 Shijingshan Road, Beijing 100043, China