



HDMI USB SD Card C Mount CMOS Microscope Camera A59.2219

Our Product Introduction

for more products please visit us on cnoec.com

Basic Information

- Place of Origin: China
- Brand Name: CNOEC, OPTO-EDU
- Certification: CE, Rohs
- Model Number: A59.2219
- Minimum Order Quantity: 1 pc
- Price: FOB \$1~1000, Depend on Order Quantity
- Packaging Details: Carton Packing, For Export Transportation
- Delivery Time: 5~20 Days
- Payment Terms: T/T, West Union, Paypal
- Supply Ability: 5000 pcs/ Month



Product Specification

- Theory: WIFI Digital Camera
- Storage: SD Card
- Sensor: Cmos
- White Balance: Auto
- Output: HDMI USB
- System: Windows® XP /Vista /7/8/8.1 Linux OSx
- Highlight: **microscope accessory, parts of the microscope**



Product Description

HDMI USB SD Card C Mount CMOS Microscope Camera A59.2219

A59.2219 camera is a multiple interfaces (HDMI+USB2.0+SD card) CMOS camera, it adopts ultra-high performance CMOS sensor as the image-picking device. USB2.0 is used as the data transfer interface.

For HDMI output, a camera control panel and toolbar are overlaid on the HDMI screen, in this case, the USB mouse can be used to set the camera, browse and compare the captured image, play the video etc.

For USB2.0 output, unplug the mouse and plug in the USB2.0 cable, then the video stream can be transfer to computer with the advanced software. With it you can control the camera, process the image.

A59.2219 camera can be used for microscope, industrial stereo microscope, on-line inspection et al.

- * All in 1(HDMI+USB+SD card) C-mount camera with high sensitivity CMOS sensor;
- * Simultaneous HDMI & USB output;
- * Built-in mouse control;
- * Built-in image capture & video record to SD card;
- * Built-in camera control panel for mouse control;
- * Built-in toolbar including zoom, mirror, comparison, freeze, cross, browser functions;
- * Built-in image & video browsing, display & play;
- * Ultra-Fine color engine with perfect color reproduction capability(USB);
- * With advanced video & image processing application;
- * Support standard UVC for Windows/Linux/Mac(USB);
- * CNC shell molding design;

A59.2219 HDMI+USB+SD Card C-Mount CMOS Camera

Sensor & Size(mm)	1080P/Sony IMX236(C) 1/2.8"(5.5x3.4)
Pixel(μm)	2.8x2.8
G Sensitivity Dark Signal	510 mv with 1/30s, 0.15 mv with 1/30s
FPS/Resolution	60@1920x1080, 30@1920x1080
Binning	1x1
Exposure	0.4ms~999ms
Interface & Button Functions	
USB	USB Camera or USB Mouse
HDMI	HDMI Output
DC12V	12V Power in
SD	SD Card Slot
ON/OFF	Power On/Off Switch
LED	Power On Indicator
Specification for HDMI Output	
UI Operation	With USB Mouse
Image Capture	High Speed in SD Card
Video Record	1080P 30fps in SD Card
Camera Control Panel	Including Exposure, Gain, White Balance, Color Adjustment, Sharpness and Denoising Control
Toolbar	Including Zoom, Mirror, Comparison, Freeze, Cross, Browser Function
Specification for USB Output	
White Balance	Auto White Balance
Color Technique	Ultra-Fine™ Color Engine (USB)
Capture/Control API	Standard UVC for Windows/Linux/Mac(USB)
Recording System	Still Picture or Movie (USB)
Software Environment (for USB2.0 Connection)	
Operating System	Microsoft® Windows® XP /Vista /7/8/8.1 (32 & 64 bit) OSx(Mac OS X) Linux
PC Requirements	CPU: Equal to Intel Core2 2.8GHz or Higher Memory: 4GB or More USB Port: USB2.0 High-speed Port Display: 19" or Larger CD-ROM
Operating Environment	
Operating Temperature	-10~ 50°C
Storage Temperature	-20~ 60°C
Operating Humidity	30~80%RH
Storage Humidity	10~60%RH
Power Supply	DC 12V/2A Adaptor
Overall Dimensions	
Width x Depth x Height	78 mm (3.07") x 70 mm (2.76") x 92mm (3.62")
Weight	0.47 kg (1.0lbs)





A59. 2219 HDMI+USB C-Mount CMOS Camera





Full Set Of Parts

Standard Packing List

- A - Gift box: L:22.5cm W:17.0cm H:9.0cm (1pcs, 1.65Kg/ box)
- B - HDMI+USB+SD Card all in 1 camera
- C - Power Adaptor: Input: AC 100~240V 50Hz/60Hz, Output: DC 12V 1A
 American standard: Model: GS12U12-P11 12W/12V/1A: UL/CUL/BSMI/CB/FCC
 EMI Standard: EN55022,EN61204-3, EN61000-3-2,-3, FCC Part 152 class B, BSMI CNS14338
 EMS Standard: EN61000-4-2,3,4,5,6,8,11,EN61204-3,Class A Light Industry Standard
 European standard: Model:GS12E12-P11 12W/12V/1A: TUV(GS)/CB/CE/ROHS
 EMI Standard: EN55022,EN61204-3, EN61000-3-2,-3, FCC Part 152 class B, BSMI CNS14338
 EMS Standard: EN61000-4-2,3,4,5,6,8,11,EN61204-3,Class A Light Industry Standard
- D - HDMI Cable
- E - USB Mouse
- F - High-speed USB2.0 A male to A male gold-plated connectors cable /2.0m
- G - CD (Driver & utilities software, Ø12cm)
- H - Adjustable lens adaptor
 C-Mount to Dia.23.2mm Eyepiece Tube, Magnification 0.37x, 0.50x or 0.75x
 (Please choose 1 of them for your microscope)
 C-Mount to Dia.31.75mm Eyepiece Tube, Magnification 0.37x, 0.50x or 0.75x
 (Please choose 1 of them for your telescope)
- I - Fixed lens adaptor
 C-Mount to Dia.23.2mm Eyepiece Tube, Magnification 0.37x, 0.50x or 0.75x
 (Please choose 1 of them for your microscope)
 C-Mount to Dia.31.75mm Eyepiece Tube, Magnification 0.37x, 0.50x or 0.75x
 (Please choose 1 of them for your telescope)

Note: For H and I optional items, please specify your camera type(C-mount, microscope camera or telescope camera), Our engineer will help you to determine the right microscope or telescope camera adapter for your application;

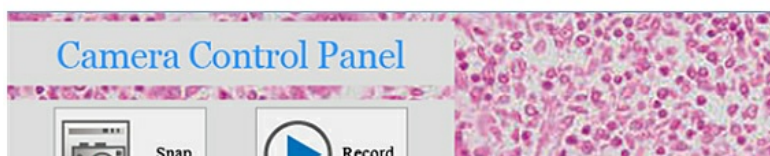
- J - 108015(Dia.23.2mm to 30.0mm Ring)/Adaptor rings for 30mm eyepiece tube
- K - 108016(Dia.23.2mm to 30.5mm Ring)/ Adaptor rings for 30.5mm eyepiece tube
- L - Calibration Kit
 X=0.01mm/100Div.;
 X,Y=0.01mm/100Div.;
 X=0.01mm/100Div., 0.10mm/100Div.
- M - SD Card(4G or 8G)



Extension of Camera with Microscope Adaptor (23.2mm)

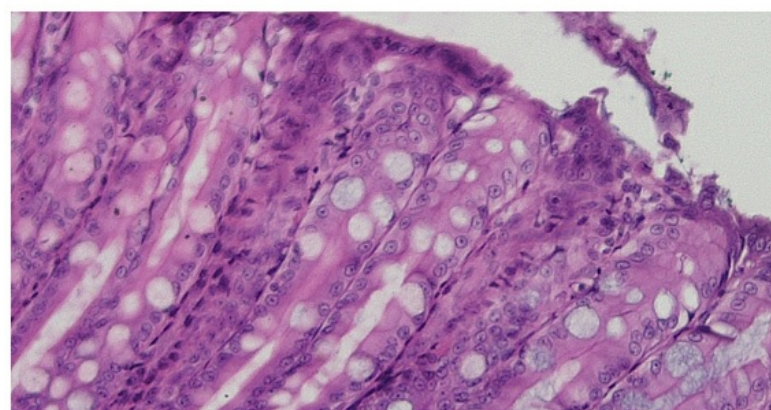


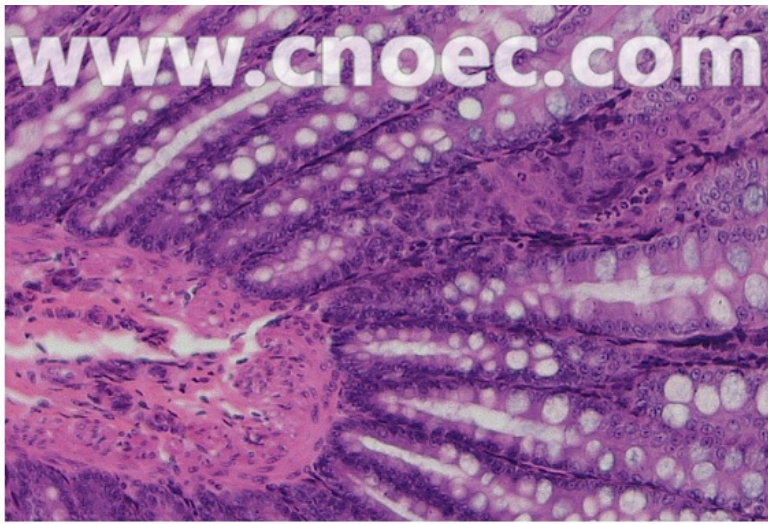
Extension of Camera with Telescope Adaptor 31.75mm)





Slat Crystal





Large Intestine Sec



Housefly Mouth Parts W.M



Opto-Edu (Beijing) Co., Ltd.

☎ 0086 13911110627

✉ sale@optoedu.com

🌐 cnoec.com

F-1501 Wanda Plaza, No. 18 Shijingshan Road, Beijing 100043, China