



## OPTO-EDU A33.1502 LED Light HD Screen 1600X Lcd Digital Usb Microscope

Our Product Introduction

for more products please visit us on [cnoec.com](http://cnoec.com)

### Basic Information

- Place of Origin: China
- Brand Name: CNOEC, OPTO-EDU
- Certification: CE, Rohs
- Model Number: A33.1502
- Minimum Order Quantity: 1 pc
- Price: FOB \$1~1000, Depend on Order Quantity
- Packaging Details: Carton Packing, For Export Transportation
- Delivery Time: 5~20 Days
- Payment Terms: T/T, West Union, Paypal
- Supply Ability: 5000 pcs/ Month

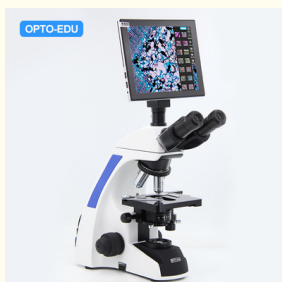


### Product Specification

- LCD: 9.7" HD IPS Touch Screen With Backlight
- Camera: 5.0M 1/2.5" CMOS Digital Camera
- Resolution: 2048x1536 @15FPS
- Pixel: 2.2umx2.2um
- Data Storage: TF Card Or Built-in Memory
- Data Output: USB2.0, HDMI, TF Card
- Highlight: **digital trinocular microscope, infinity plan microscope**



### More Images



## Product Description

### 9.7" LCD Touch Screen Digital Microscope, 5.0M, Android Pad

9.7" LCD Touch Screen Pad, With Android System + Measuring Software

High Eyepoint Wide Field Eyepiece WF10x/20mm Dia.30mm

Achromatic HC 4x,10x,40x100x Objective, Upgradeable To Infinity

Double Layer Mechanical Stage 143\*132mm, Upgradeable To 216x150mm

3W LED Kohler Illumination With Removable Light House For Easy Maintenance

Laboratory Biological Microscope Optional Accessories		
Eyepiece	WF16X/F.N.15mm	A51.1502-16
	WF20X/F.N.12mm	A51.1502-20
Nosepiece	Backward Quintuple Nosepiece	A54.1502-5
Dark Field	Dark Field Condenser, Dry, N.A.1.25	A5D.1502-D
	Dark Field Condenser, Immersion, N.A.1.25~1.36	A5D.1502-I
Polarizing	Polarizer & Analyzer	A5P.1501
Phase Contrast	Turret Disc Phase Contrast Condenser, For 10x,20x,40x,100x Infinity Plan Phase Contrast Objective 10x,20x,40x,100x Centering Telescope 10x Optional For B, T Only	A5C.1501
Adapter	Eyepiece Tube Adapter	A55.1502-E
	C-Mount 1.0x	A55.1502-10



**OPTO-EDU (BEIJING) CO., LTD.**

F-1501 Wanda Plaza, No.18 Shijingshan Road, Beijing 100043, China  
Tel: +8610 88696020, E-mail: sale@cnoec.com

**A33.1502**  
**9.7" LCD Touch Screen Digital Microscope,**  
**5.0M, Android Pad**

The advertisement features a digital microscope with a 9.7-inch LCD touch screen. The screen displays a blue-tinted image of a biological specimen, possibly a cell or tissue. The microscope is white and black, with a prominent blue stripe on the side. The background is a dark, starry space with a large planet and a hand reaching out towards the microscope. The overall aesthetic is futuristic and scientific.

## A33.1502

9.7" LCD Touch Screen Digital Microscope, 5.0M, Android Pad





### Head & Eyepiece

Inclined 30°, Interpupillary 48-75mm, 360°  
Rotatable, WF10x/20mm



### Objective

Backward Quadruple Nosepiece  
High Contrast Chromatic Free  
4x, 10x, 40x(S), 100x(Oil, S)





### Mechanical Stage

Double Layer Working Stage With Slide Holder,  
Size 142x132mm, Graphite Surface, Moving  
Range 75x50mm



### Condenser

Using High-power LED Light Source,  
Equipped With Double Lens + Abbe  
Condenser Design, The Light Source  
Is Both Focused And Symmetrical



### Illumination

External Illumination, 3W/LED, Brightness Adjustable



Release This Screw Before Use

Which fix & protect working stage during transportation

Easy Repair  
Removable Cover For Easy Repair & Maintenance

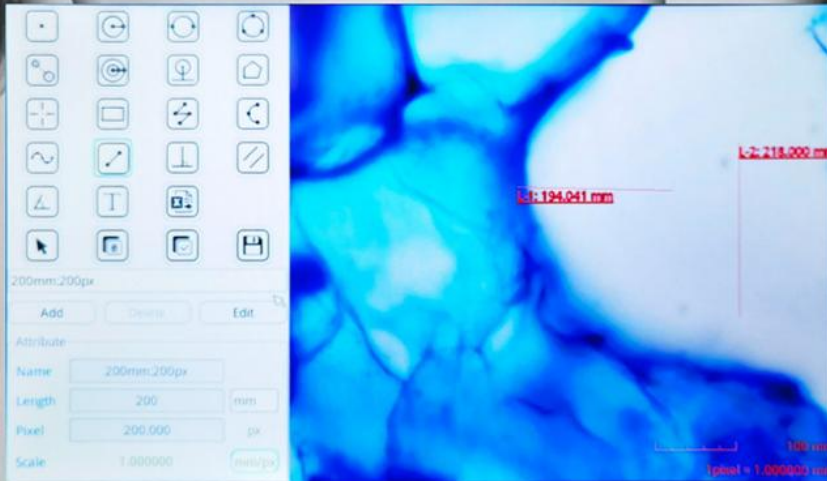
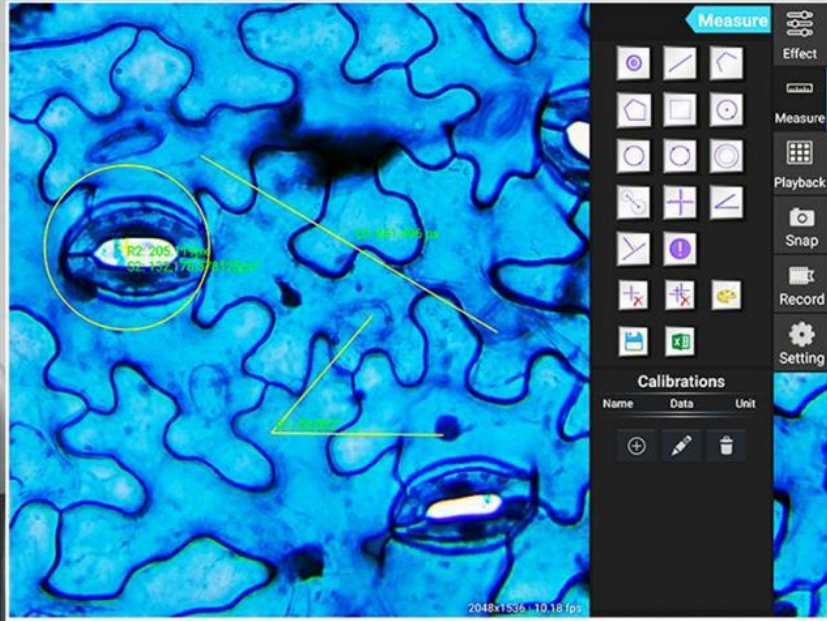
# 9.7" LCD Touch Screen Android Pad (A59.3520)

5.0M, Measurement, Recording, Taking Photo And Entering The Album

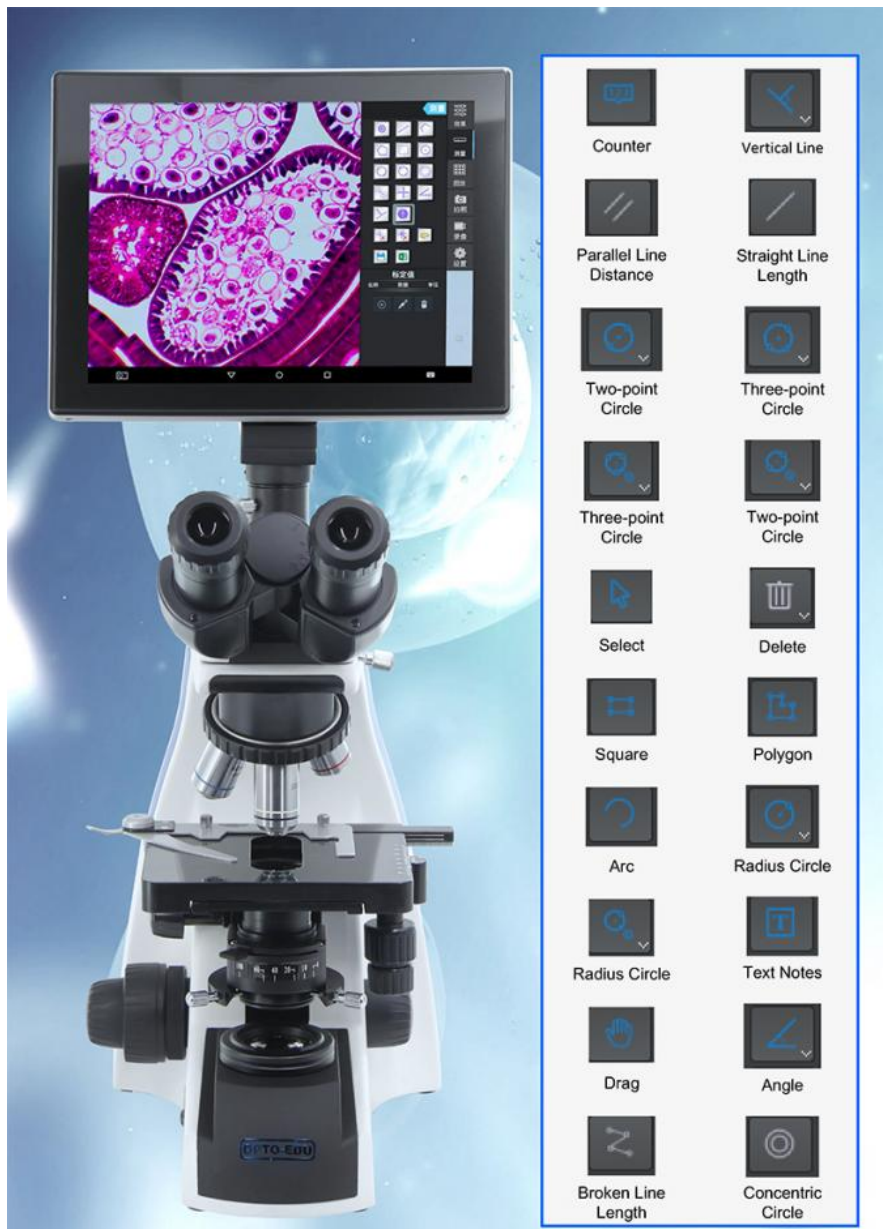


# Measuring Software Installed

Touch Screen | Full Range Measure | 90 Languages

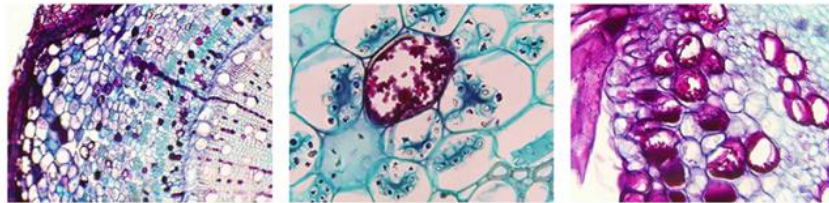






A33.1502 9.7" LCD Digital Biological Microscope	
Head	Trinocular Head, 30° Inclined, Interpupillary Distance 48-75mm, Both Eyepiece Tube Diopter Adjustable
Eyepiece	WF10x/20mm, Diopter Adjustable, Dia. 30mm
Objective	High Contrast Chromatic Free 4x, 10x, 40x(S), 100x(Oil, S)
Focus Knob	Coaxial Coarse & Fine Focusing, Fine Division 0.002mm, Coarse Stroke 37.7mm/Rotation, Focusing Range 24mm
Nosepiece	Quadruple, Backward With Click Stops
Stage	Double Layer Mechanical Stage 142x132mm, Graphite Surface, Moving Range 75x50mm
Condenser	Abbe Condenser N.A.1.25, Center Adjustable
Light Source	3W LED Brightness Adjustable
Adapter	C-Mount 0.5x
Package	53*32.5*53.5cm/11.5Kg, 1 Set/Carton
9.7" LCD Pad Digital Camera (A59.3520)	
LCD	9.7" HD IPS Touch Screen With Backlight
Camera	5.0M 1/2.5" CMOS Digital Camera
Resolution	2048x1536 @15FPS
Pixel	2.2umx2.2um
Data Storage	TF Card or Built-in Memory
Data Output	USB2.0, HDMI, TF Card
Photo	5.0M .JPEG
Video	1080p Video Record
System	Android 5.1 System
	90 Languages
	Support Mouse + Keyboard Control
	Support WIFI

	Support Bluetooth
	S-Eye Software & Instruction Manual Installed
	Mark: Point, Crosshair, Coordinate, Text
Function	Length Measure: Straight Line Length, Broken Line Length, Curve Length, Parallel Line Distance, Point To Line Distance
	Distance Between 2 Circle Centers: Radius Fixed Circle, Two-point Fixed Circle, Three-point Fixed Circle
	Geometric Measure: Line Segment Length, Radius Fixed Circle, Two-point Fixed Circle, Three-point Fixed Circle, Concentric Circle
	Geometric Area Measure: Polygon, Square
Power	DC 12V/2A Power Adaptor, AC 100~240V
Size	Pad 238x182x12mm, Camera 40x39mm



◆ **Dark-field Viewing**

It can be used for clearly viewing of blood or flagellum etc. fine structure.



A5D.1502-D



A5D.1502-I



◆ **Polarizing Viewing**

It is quite suitable for viewing collagen, amyloid and crystal etc. double refracting specimen.



**Opto-Edu (Beijing) Co., Ltd.**

☎ 0086 13911110627

✉ sale@optoedu.com

🌐 cnoec.com

F-1501 Wanda Plaza, No. 18 Shijingshan Road, Beijing 100043, China